**Part Number**

- **10020** AC-500-2-325 for operation on 3.25" or 3.33" flange flat rail
- **10021** AC-500-2-333 for operation on or 3.33" flange 6" S-Beam
- **10030** AC-500-2-4 for operation on 2.66" flange 4" S-Beam

**Application**

- Used in tandem as articulating load bars on horizontal curved monorail systems

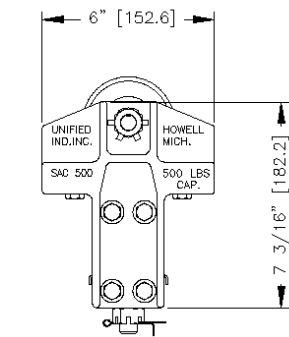
**Features**

- High tensile almag alloy frames
- Integral built-in safety lugs
- Shielded side thrust roller protection
- Hardened ball bearing side thrust rollers
- Forged wheels 3.2" diameter flat or contoured induction hardened with permanently sealed precision ball bearings
- Load bearing brass wear plate
- Heat treated steel pivot bolt

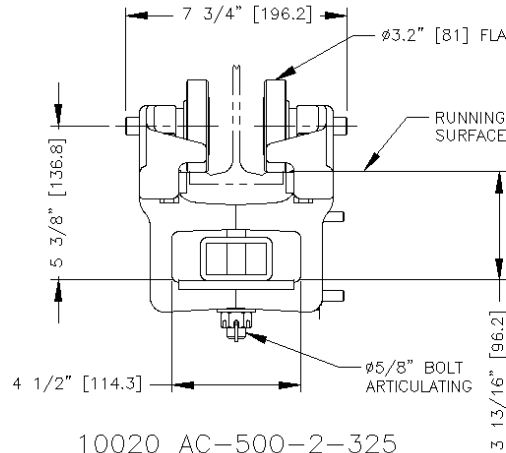
**Options**

- Standard conveyor wheels 3.2" diameter flat or contoured with lubricated ball bearings
- Can be furnished as an assembled end truck or load bar

© Copyright 2010, Unified Industries, Inc. [www.unified-ind.com](http://www.unified-ind.com)

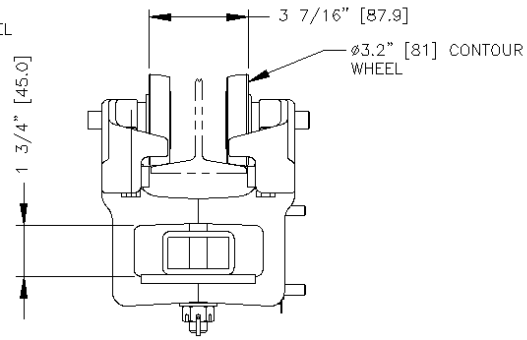


COMMON SIDE VIEW



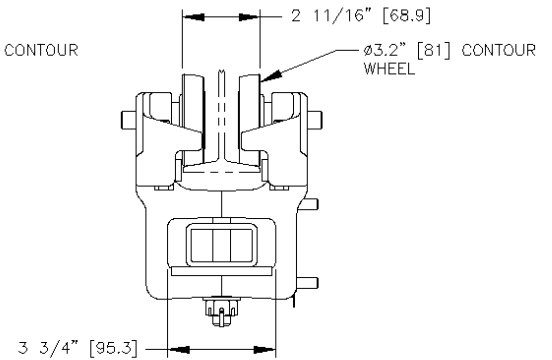
10020 AC-500-2-325

FOR OPERATION ON 3.25" [82.6] FLAT FLANGE RAIL & 3.33" [84.6] SPECIAL FLAT FLANGE RAIL



10021 AC-500-2-333

FOR OPERATION ON S6 WITH 3.33" [84.6] FLANGE WIDTH



10030 AC-500-2-4-266

FOR OPERATION ON S4 WITH 2.66" [67.6] FLANGE WIDTH

- ALL DIMENSIONS ARE REFERENCE ONLY

APPLICATIONS FOR AC-500 ARTICULATING CARRIER HEAD TROLLEYS

ASSEMBLIES ON A MINIMUM 3FT. CURVED RUNWAY.  
USE IN PAIRS FOR LOAD BAR ASSEMBLIES ON 3FT. MINIMUM CURVED MONORAIL.

TROLLEY SPECIFICATIONS

RATED LOAD: 500LBS. (224Kgs)  
WEIGHT: 10.5LBS. (4.70Kgs)  
BODY: HIGH TENSILE ALMAG  
WHEELS: ø3.2" [82.6]  
STUD: ø5/8" [16]  
ROLLERS: BALL THRUST BEARINGS

NOTES:

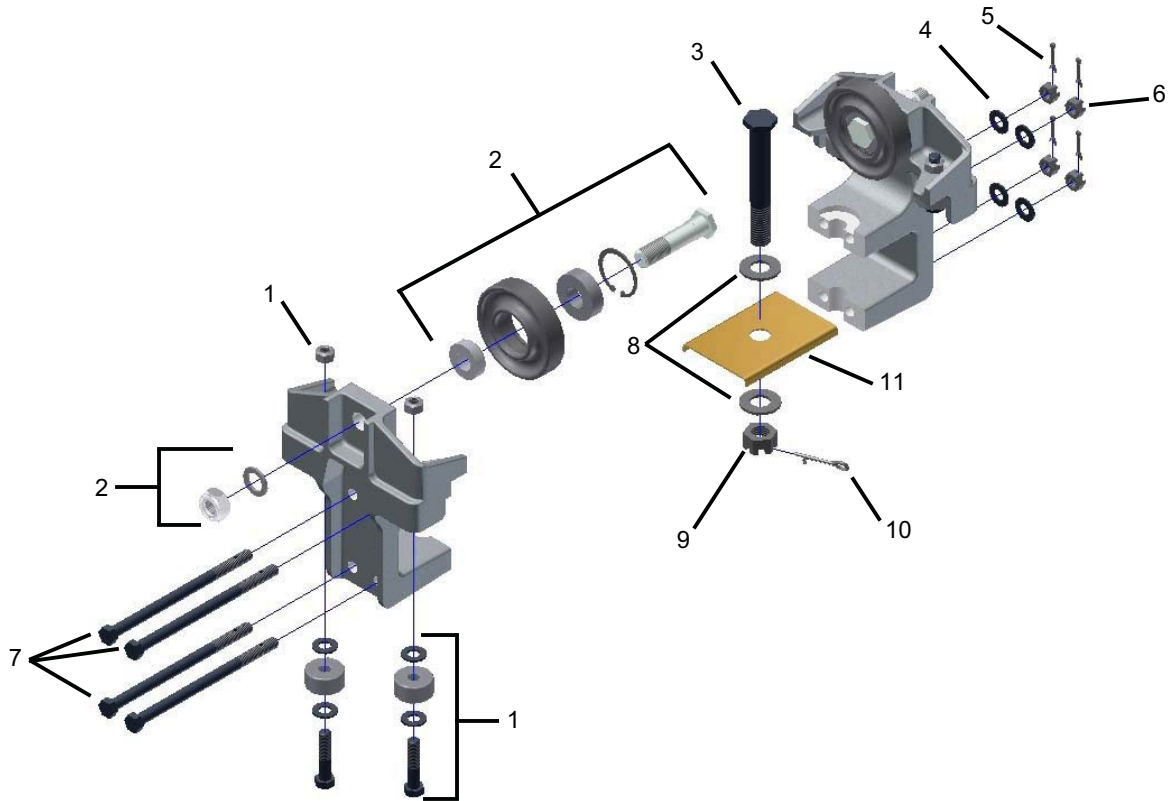
ALL AC-500 TROLLEYS COME WITH A BRASS WEAR PLATE.  
WHEN ORDERING PLEASE SPECIFY WIDTH OF RUNNING SURFACE FLANGE.  
(1) 3.25" [82.6] FOR STD. & SPECIAL FLAT RAIL.  
(2) 2.66" [67.6] FOR S4 BEAM  
(3) 3.33" [84.6] FOR S6 BEAM  
AVAILABLE WITH FLAT OR CONTOUR WHEELS.

**AC-500-2  
AC-500-2-4**

REF.	STOCK CODE	DESCRIPTION	QUANTITY
1	15010	Guide Roller Sub-Assembly	4
		3021 1.25" Guide Roller	4
		3/8" Hex Bolt	4
		3/8" Top Lock Nut	4
		3/8" Washer	8
2	30090	3049 Flat Wheel Sub-Assembly	2
		3.2" Flat Wheel	2
		Snap Ring	2
		Wheel Bearing	2
		Stud	2
		Spacer	2
		5/8" Wheel Stud Washer	2
		5/8" Nylon Insert Jam Nut	2
3	51090	5/8" Half Head Hex Bolt	1
4	53040	3/8" Washer	4
5	54010	3/32" Cotter Pin	4
6	52110	3/8" Slotted Hex Nut	4
7	50610	3/8" Hex Bolt	4
8	53070	5/8" Washer	1
9	52290	5/8" Slotted Hex Nut	1
10	54083	5/32" Cotter Pin	1
11	75050	SAC-500 Brass Pad	1

**AC-500-2 and AC-500-2-4 OPTIONS**  
(See Page 19 for Optional Wheels)

STOCK CODE		DESCRIPTION
30110	3050	3.2" Contour Wheel Assembly
30370	3065	3.2" Flanged Bronze Wheel Assembly
30420	3017	4" Flat Conveyor Wheel Assembly
30430	3018	4" Contour Conveyor Wheel Assembly



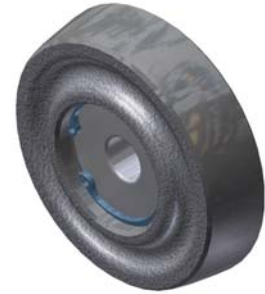
OPTIONAL WHEEL ASSEMBLIES



2" DIA. FLANGED WHEEL  
3039 - Contour (Shown) (30020)



2" DIA. BRAS FLANGED WHEEL  
Flat (Shown) (30365)



2.4" DIA. WHEEL  
3053 - Contour (Shown) (30060)



3.2" DIA. WHEEL  
3050 - Contour (Shown) (30110)



4" DIA. CONVEYOR WHEEL  
3017 - Flat (Shown) (30420)  
3018 - Contour (30430)



BRASS  
3.2" DIA. FLANGED WHEEL  
3065 - Flat or Contour Brass (30370)