



Part Number

- **10040** BT-266 for operation on 2.66" flange 4" S-Beam
- **10041** BT-266-DHS for operation on 2.66" flange 4" S-Beam
- **10050** BT-325-DHS for operation on 3.25"/3.33" flange flat rail
- **10051** BT-325 for operation on 3.25"/3.33" flange flat rail
- **10052** BT-333 for operation on 3.33" flange 6" S-Beam
- **10053** BT-333-DHS for operation on 3.33" flange 6" S-Beam

Application

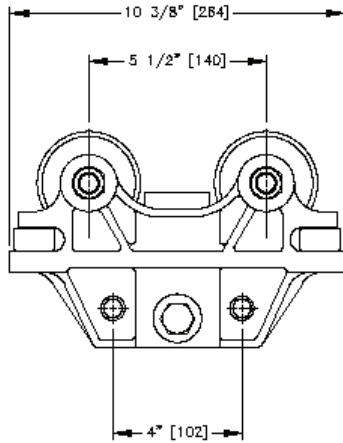
- For suspension of portable tools, welding guns, balancers, hoists, fixtures etc.
- Used in pairs for bridge crane end truck assemblies and load bars

Features

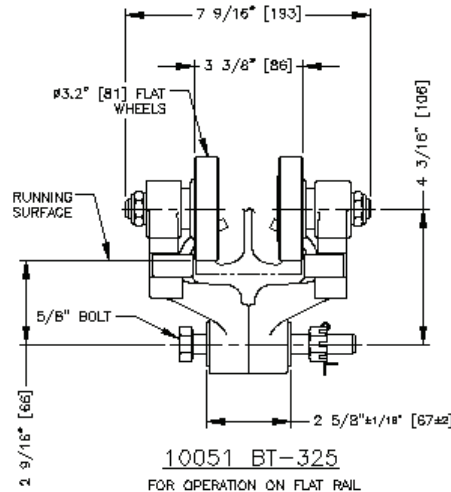
- Patented dual safety clevis
- 3.25" diameter load wheels
- High tensile almag alloy frames
- Hardened and ground ball bearing side thrust rollers
- Minimum track radius is 60 inches

Options

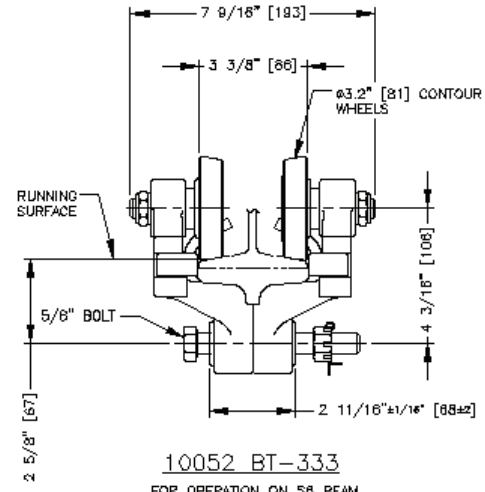
- Available with or without forged eye bolt
- Available with or without dual hanging strap
- Flat or contoured "Conveyor" steel load wheels



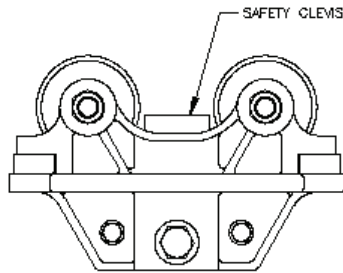
COMMON SIDE VIEW



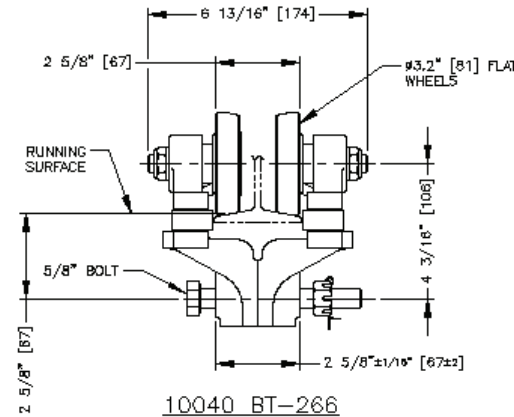
10051 BT-325
FOR OPERATION ON FLAT RAIL
WITH 3.25" [82.6] FLANGE WIDTH



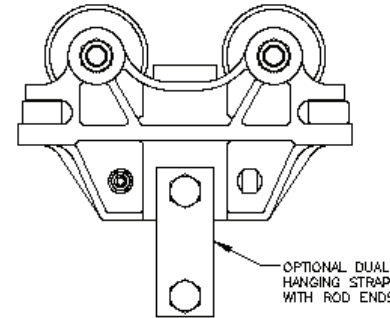
10052 BT-333
FOR OPERATION ON S8 BEAM
WITH 3.33" [84.8] FLANGE WIDTH



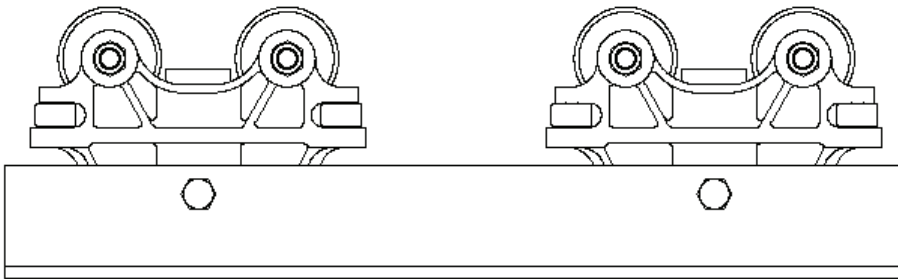
COMMON SIDE VIEW



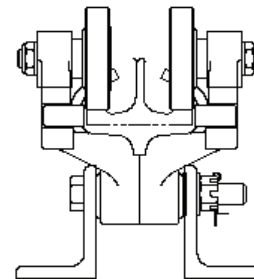
10040 BT-266
FOR OPERATION ON S4 BEAM
WITH 2.66" [67.6] FLANGE WIDTH.



OPTIONAL DUAL
HANGING STRAP
WITH ROD ENDS



BRIDGE CRANE END TRUCK
AVAILABLE IN VARIOUS LENGTHS



TROLLEY SPECIFICATIONS:

RATED LOAD: 2000 LBS (672 Kgs)
 WEIGHT: 16 LBS (7.2 Kgs)
 BODY: HIGH TENSILE ALMAG
 WHEELS: 3.2" [81.3] DIA.
 STUDS: 5/8" [16] DIA.
 THRUST ROLLERS: BEARING
 HARDENED & GROUND

NOTES:

WHEN ORDERING SPECIFY EXACT WIDTH OF
 RUNNING SURFACE FLANGE.

(1) 3.25" [82.6] FOR FLAT RAIL
 (2) 2.66" [67.6] FOR S4 BEAM
 (3) 3.33" [84.8] FOR S8 BEAM
 MINIMUM TRACK RADIUS 60" [1524].

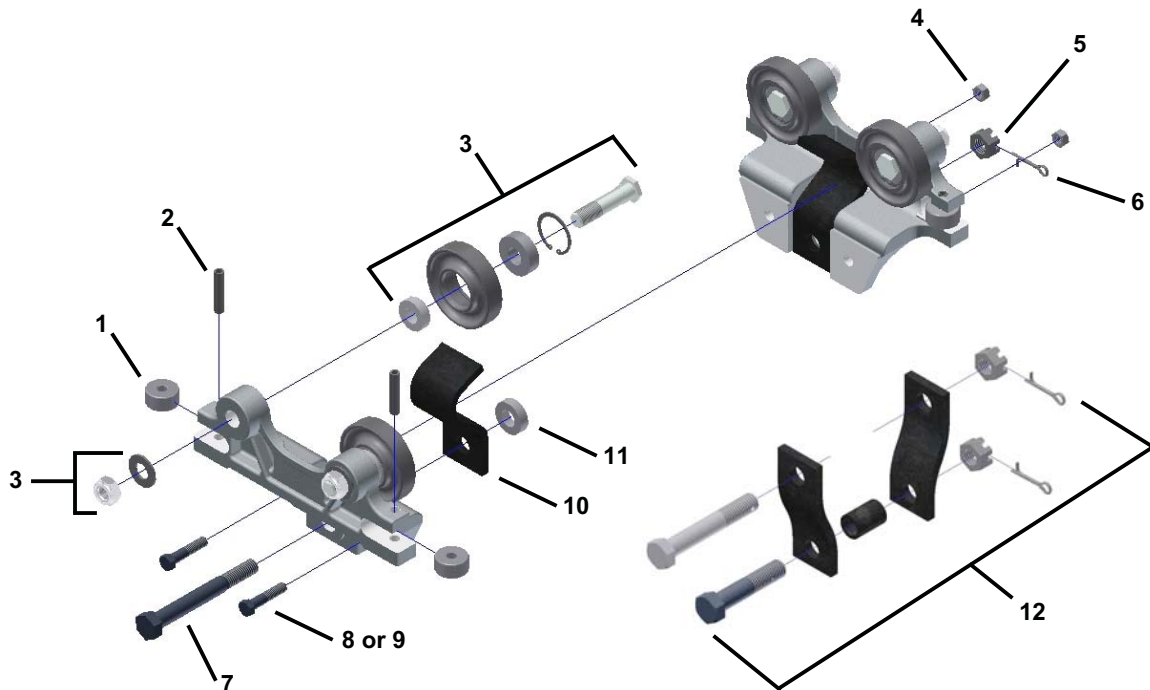
BT-325, BT-266, BT-333
BT-325-DHS, BT-266-DHS, BT-333-DHS

REF.	STOCK CODE	DESCRIPTION	QUANTITY
1	56170	3021-1 1.25" Guide Roller	4
2	54200	3/8" x 1.75" Spring Pin	4
3	30095	3049 Flat Wheel Sub-Assembly	4
		3.2" Flat Wheel	4
		Snap Ring	4
		Wheel Bearing	4
		Stud	4
		Spacer	4
		5/8" Sae Flat Washer	4
		5/8" Nylon Insert Jam Nut	4
4	52095	3/8" Top Lock Nut	2
5	52290	5/8" Slotted Hex Nut	1
6	54083	5/32" Cotter Pin	1
7	51110	5/8" Hex Bolt	1
8	50500	3/8" Hex Bolt	2
9**	50045	3/8" Rod End	2
10	61120	Safety Strap	2
11	55590	Spacer (Specify Trolley Model)	1
12**	15100	DHS-5011-1 Hanger Strap Sub-Assembly	1
		5/8" Eyebolt	1
		Hanger Strap	2
		Spacer	1
		5/8" Hex Bolt	1
		5/8" Slotted Hex Nut	2
		5/32" Cotter Pin	2

** For DHS Option Only

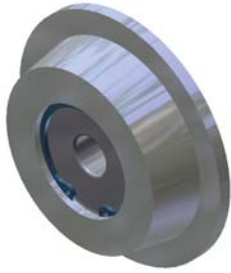
BT-325, BT-266, BT-333
BT-325-DHS, BT-266-DHS, BT-333-DHS OPTIONS
 (See Page 19 for Optional Wheels)

STOCK CODE		DESCRIPTION
30110	3050	3.2" Contour Wheel Assembly
30370	3065	3.2" Flanged Brass Wheel Assembly
30420	3017	4" Flat Conveyor Wheel Assembly
30430	3018	4" Contour Conveyor Wheel Assembly

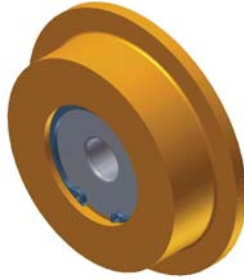


© Copyright 2010, Unified Industries, Inc. www.unified-ind.com

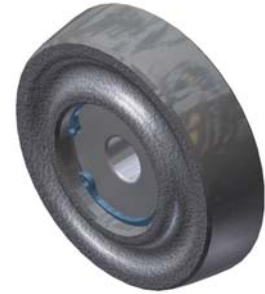
OPTIONAL WHEEL ASSEMBLIES



2" DIA. FLANGED WHEEL
3039 - Contour (Shown) (30020)



2" DIA. BRAS FLANGED WHEEL
Flat (Shown) (30365)



2.4" DIA. WHEEL
3053 - Contour (Shown) (30060)



3.2" DIA. WHEEL
3050 - Contour (Shown) (30110)



4" DIA. CONVEYOR WHEEL
3017 - Flat (Shown) (30420)
3018 - Contour (30430)



BRASS
3.2" DIA. FLANGED WHEEL
3065 - Flat or Contour Brass (30370)