

Part Number

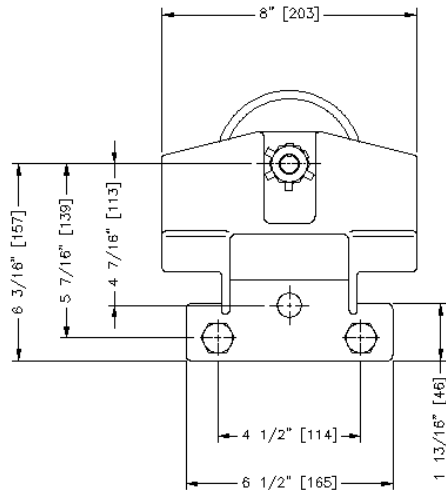
- **10154** MBC-1000-3-325 without kickup wheels for operation on 3.25"/3.33" flange flat rail. 1000 lb. Rated Load
- **10155** MBC-1000-3-333 without kickup wheels for operation on 3.33" flange 6" S-Beam. 1000 lb. Rated Load
- **10156** MBC-1500-3-325 without kickup wheels for operation on 3.25"/3.33" flange flat rail. 1500 lb. Rated Load
- **10157** MBC-1500-3-333 without kickup wheels for operation on 3.33" flange 6" S-Beam. 1500 lb. Rated Load

Application

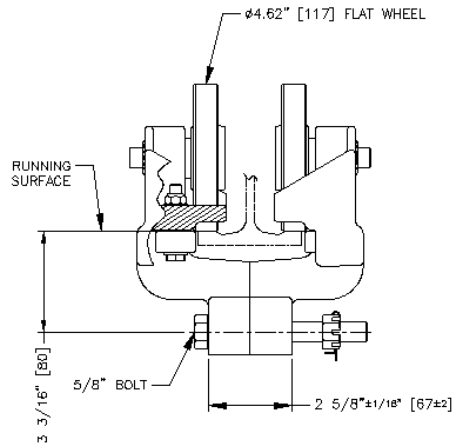
- Used in pairs for bridge crane end truck assemblies and load bars

Features

- Built-in safety lugs, integral in almag frames
- High tensile almag alloy frames
- 4.62" diameter drop forged steel load wheels with low friction sealed bearings permanently lubricated
- Hardened and ground ball bearing side thrust rollers

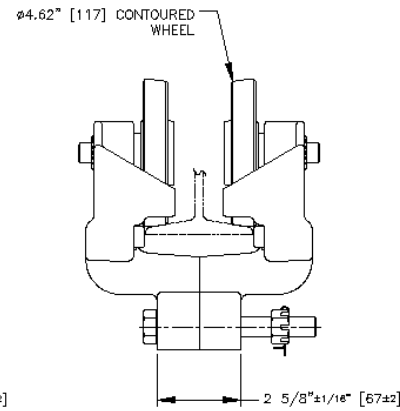


COMMON SIDE VIEW



10154 MBC-1000-325 W/O K.U.

TWO WHEEL TROLLEY WITHOUT COUNTER THRUST WHEEL FOR OPERATION ON FLAT RAIL WITH 3.25\" [82.6] OR 3.33\" [84.6] FLANGE WIDTH. SPECIFY 1000LBS [448Kgs] OR 1500LBS [672Kgs] (10156)



10155 MBC-1000-333 W/O K.U.

TWO WHEEL TROLLEY WITHOUT COUNTER THRUST WHEEL FOR OPERATION ON S6 BEAM WITH 3.33\" [84.6] FLANGE WIDTH. SPECIFY 1000LBS [448Kgs] OR 1500LBS [672Kgs] (10157)

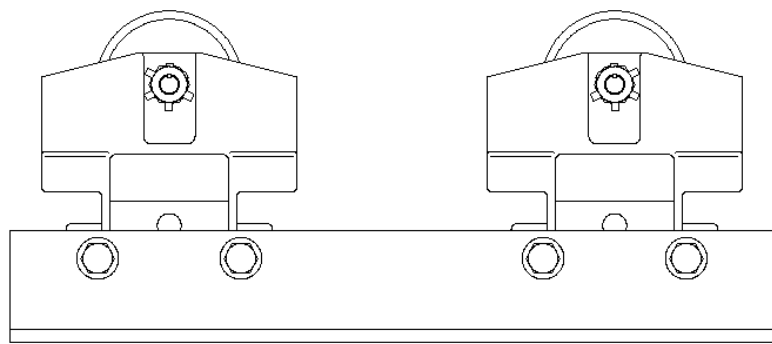
TROLLEY SPECIFICATIONS

RATED LOAD:
 1000 LBS [448Kgs]
 1500 LBS [672Kgs]

WEIGHT: 16LBS [7.2Kgs]
 TROLLEY BODY: HIGH TENSILE ALMAG

WHEEL: 4.62\" [117mm] DIA.
 STUD: 5/8\" [15.9mm] DIA.
 THRUST ROLLERS: BALL BEARING HARDENED AND GROUND.

NOTE:
 WHEN ORDERING PLEASE SPECIFY EXACT WIDTH OF RUNNING SURFACE. FLANGE OPTIONS ARE:
 3.25\" [82.6] FOR STD. FLAT RAIL
 3.33\" [84.6] FLAT RAIL
 3.33\" [84.6] FOR S6 BEAM



BRIDGE CRANE END TRUCK ASSEMBLY

COMPLETE WITH SAFETY LUGS. AVAILABLE IN VARIOUS LENGTHS USED ON UNIFIED BRIDGE CRANES

- ALL DIMENSIONS ARE REFERENCE ONLY

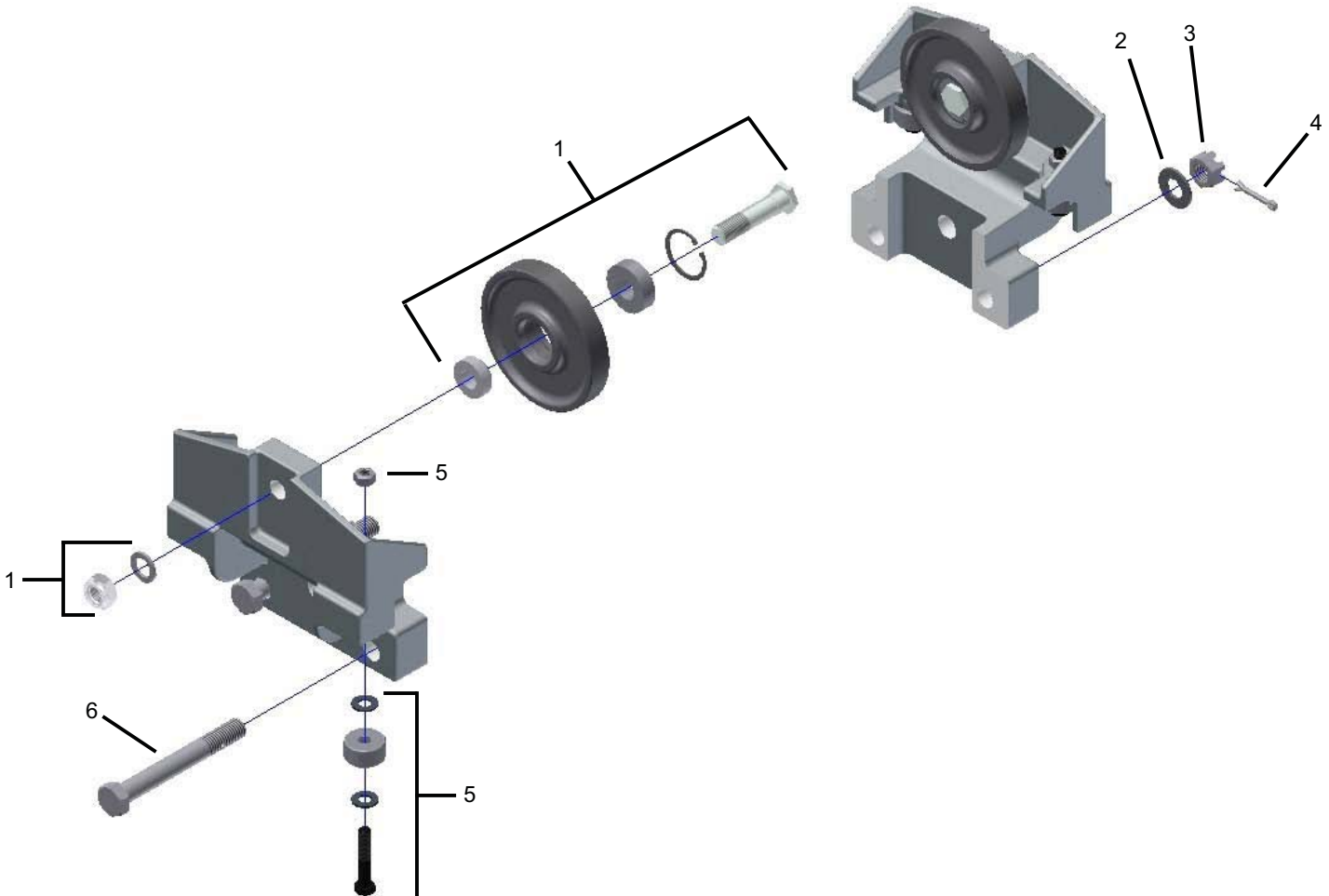
MBC-1000 Without Kickup Wheels

REF.	STOCK CODE	DESCRIPTION	QUANTITY		
1	30250	3011 Flat Wheel Sub-Assembly	2		
		4.6" Flat Wheel	2		
		Snap Ring	2		
		Wheel Bearing	2		
		Stud	2		
		Spacer	2		
		5/8" Wheel Stud Washer	2		
		5/8" Nylon Insert Jam Nut	2		
		5/8" Washer	4		
		5/8" Slotted Hex Nut	2		
2	53070	5/8" Washer	4		
		5/8" Slotted Hex Nut	2		
3	52290	5/8" Slotted Hex Nut	2		
4	54083	5/32" Cotter Pin	2		
5	15020	Guide Roller Sub-Assembly	4		
		3021 1.25" Guide Roller	4		
		3/8" Hex Bolt	4		
		3/8" Top Lock Nut	4		
		3/8" Washer	8		
		5/8" Hex Bolt	2		
		6	51110	3/8" Hex Bolt	8
				5/8" Hex Bolt	2

MBC-1000 Without Kickup Wheels OPTIONS

(See Page 20 for Optional Wheels)

STOCK CODE	STOCK CODE	DESCRIPTION
30270	3029	4.6" Contour Wheel Assembly
30290	3005	4.6" Double, Flat Wheel Assembly (MBC-1500)
30240	3038	4.6" Double, Contour Wheel Assembly (MBC-1500)
30380	3054	4.5" Flanged Bronze Wheel Assembly



© Copyright 2010, Unified Industries, Inc. www.unified-ind.com

OPTIONAL WHEEL ASSEMBLIES



BRASS
4.5" DIA. FLANGED WHEEL
3030 - Flat or Contour / Brass (30380)



4.62" DIA. WHEEL
3029 - Contour (Shown) (30270)
Single Bearing
3011 - Flat (30250)
3005 - Flat / Double Bearing (30290)
3038 - Contour / Double Bearing (30240)



4.8" DIA. WHEEL
3047 - Contour (Shown) (30320)
3046 - Flat (30300)



BRASS
4.8" DIA. FLANGED WHEEL
3061 - Flat (Shown) or Contour Brass
(30390)