

## Part Number

- **10189** MBC-500-3-325 without kickup wheels for operation on 3.25" or 3.33" - flange flat rail
- **10192** MBC-500-3-333 without kickup wheels for operation on 3.33" flange 6" S-Beam
- **10201** MBC-500-3-4-266 without kickup wheels for operation on 2.66" flange 4" S-Beam

## Application

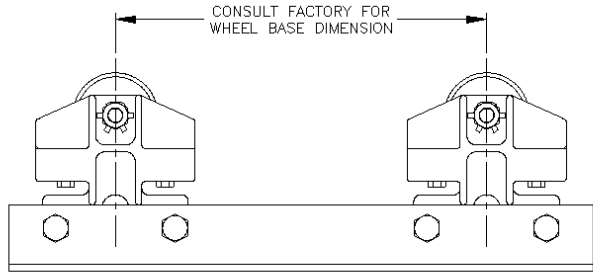
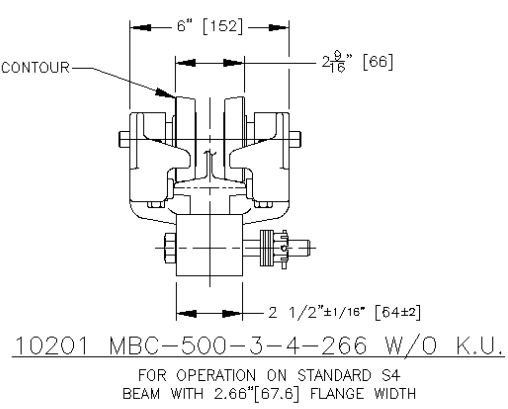
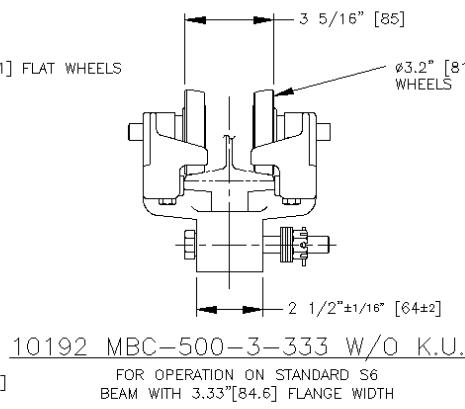
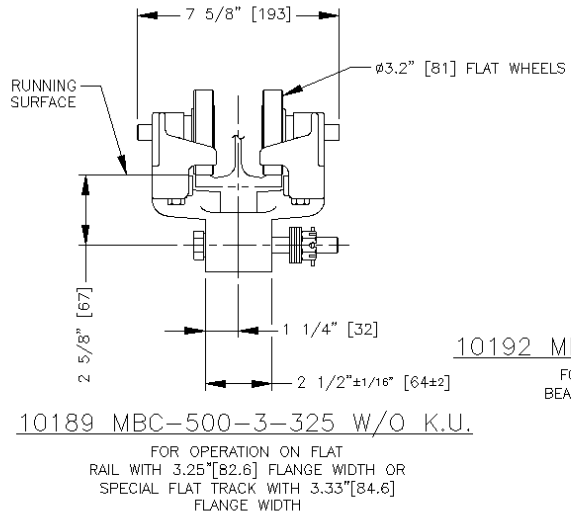
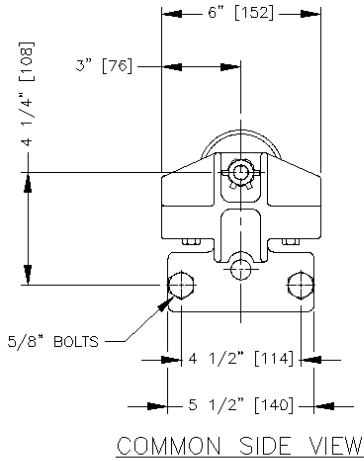
- Used in pairs for light load bridge crane end trucks
- Use in tandem for rated load to 1000 pounds

## Features

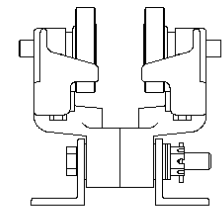
- High tensile almag alloy frames
- Integral built in safety lugs
- Shielded side thrust roller protection
- Hardened ball bearing side thrust rollers
- Forged wheels 3.2" diameter flat or contoured induction hardened with permanently sealed precision ball bearings

## Options

- Standard conveyor wheels 3.2" diameter flat or contoured with lubricated ball bearings
- Can be furnished as assembled end truck



BRIDGE CRANE END TRUCK



**TROLLEY SPECIFICATIONS**

RATED LOAD: 500 LBS. (224 Kgs)  
 WEIGHT: 12 LBS. (5.4 Kgs)  
 BODY: HIGH TENSILE ALMAG WHEEL: 3.2" [81] DIA.  
 STUD: 5/8" [15] DIA.

**NOTE:**  
 WHEN ORDERING SPECIFY EXACT WIDTH OF RUNNING SURFACE FLANGE.

- 3.25" [82.6] FOR STD. OR SPECIAL FLAT RAIL
- 2.66" [67.6] FOR S4 BEAM
- 3.33" [84.6] FOR S6 BEAM

• ALL DIMENSIONS ARE REFERENCE ONLY

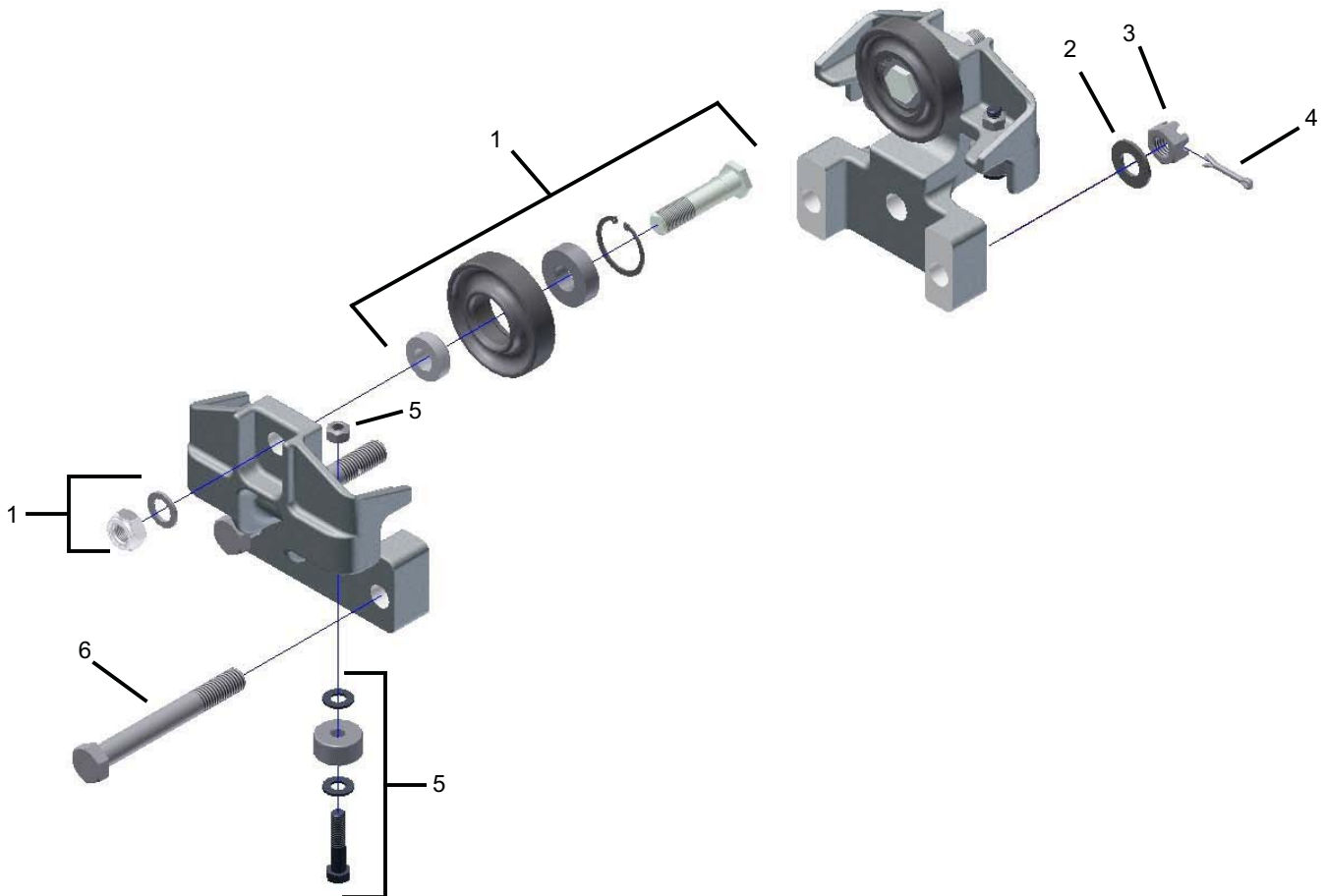
**MBC-500 WITHOUT KICKUP WHEELS  
MBC-500-S4 WITHOUT KICKUP WHEELS**

REF.	STOCK CODE	DESCRIPTION	QUANTITY
1	30090	3049 Flat Wheel Sub-Assembly	2
		3.2" Flat Wheel	2
		Snap Ring	2
		Wheel Bearing	2
		Stud	2
		Spacer	2
		5/8" Wheel Stud Washer	2
		5/8" Nylon Insert Jam Nut	2
2	53070	5/8" Washer	2
		5/8" Slotted Hex Nut	2
3	52290	5/32" Cotter Pin	2
4	54083	Guide Roller Sub-Assembly	4
5	15010	3021 1.25" Guide Roller	4
		3/8" Hex Bolt	4
		3/8" Top Lock Nut	4
		3/8" Washer	8
		5/8" Hex Bolt	2
6	51110		

**MBC-500 and MBC-500-S4 WITHOUT KICKUP WHEELS OPTIONS**

(See Page 19 for Optional Wheels)

STOCK CODE		DESCRIPTION
30110	3050	3.2" Contour Wheel Assembly
30370	3065	3.2" Flanged Bronze Wheel Assembly
30420	3017	4" Flat Conveyor Wheel Assembly
30430	3018	4" Contour Conveyor Wheel Assembly



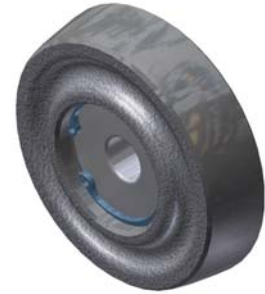
OPTIONAL WHEEL ASSEMBLIES



2" DIA. FLANGED WHEEL  
3039 - Contour (Shown) (30020)



2" DIA. BRAS FLANGED WHEEL  
Flat (Shown) (30365)



2.4" DIA. WHEEL  
3053 - Contour (Shown) (30060)



3.2" DIA. WHEEL  
3050 - Contour (Shown) (30110)



4" DIA. CONVEYOR WHEEL  
3017 - Flat (Shown) (30420)  
3018 - Contour (30430)



BRASS  
3.2" DIA. FLANGED WHEEL  
3065 - Flat or Contour Brass (30370)