**Part Number**

- **10190** MBC-500-3-325 with kickup wheels for operation on 3.25" or 3.33" - flange flat rail
- **10191** MBC-500-3-333 with kickup wheels for operation on 3.33" flange 6" S-Beam
- **10200** MBC-500-3-4-266 with kickup wheels for operation on 2.66" flange 4" S-Beam

Application

- Used in pairs on one or both ends of bridge crane to eliminate cantilever "kick-up" where overhang of bridge beam and load exceeds counter weight of bridge
- Use on light load telescope units for extending load beyond bridge crane span
- Can be adapted to tools and fixtures where cantilever rolling action is required. Third wheel engages underside of rail to eliminate possible drag

Features

- High tensile almag alloy frames
- Integral built in safety lugs
- Shielded side thrust roller protection
- Hardened ball bearing side thrust rollers
- Forged wheels 3.2" diameter flat or contoured induction hardened with permanently sealed precision ball bearings

Options

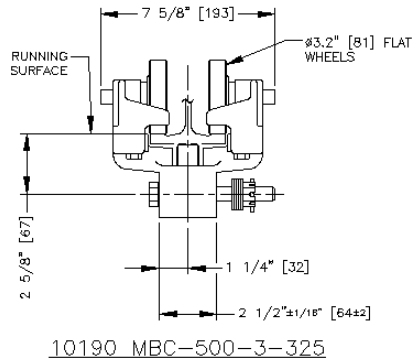
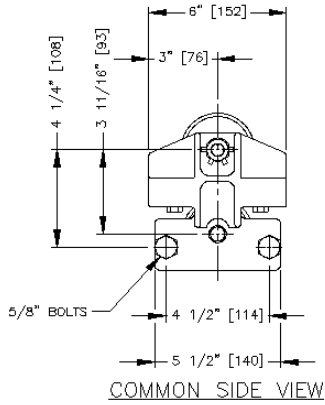
- Standard conveyor wheels 3.2" diameter flat or contoured with lubricated ball bearings
- Can be furnished as assembled end truck

TROLLEY SPECIFICATIONS

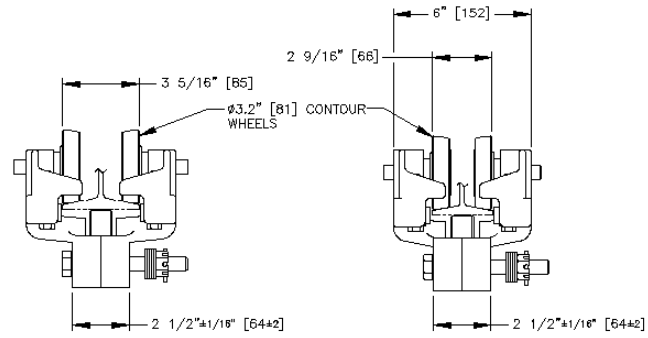
RATED LOAD: 500 LBS. (224 Kgs)
 WEIGHT: 12 LBS. (5.4 Kgs)
 BODY: HIGH TENSILE ALMAG
 WHEEL: 3.2" [81] DIA.
 STUD: 5/8" [15] DIA.
 ROLLERS: BALL BEARING HARDENED & GROUND

NOTE:

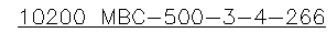
WHEN ORDERING SPECIFY EXACT WIDTH OF RUNNING SURFACE FLANGE.
 1. 3.25" [82.6] FOR STD. OR SPECIAL FLAT RAIL
 2. 2.66" [67.6] FOR S4 BEAM
 3. 3.33" [84.6] FOR S6 BEAM



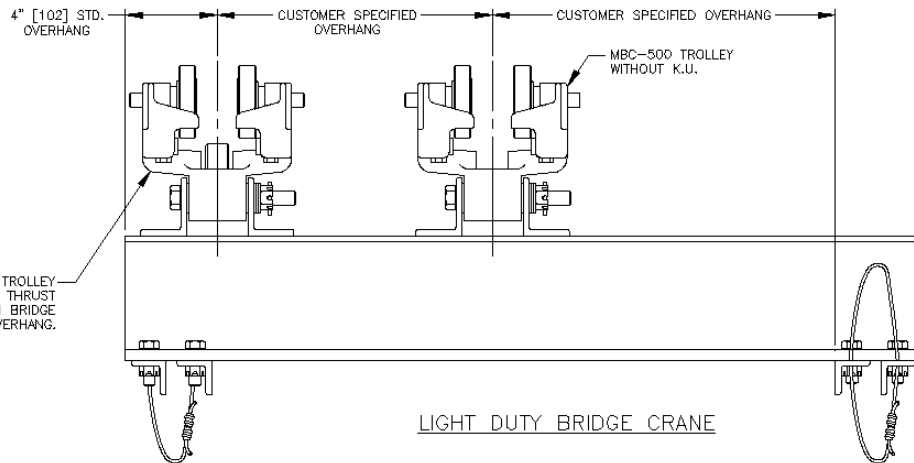
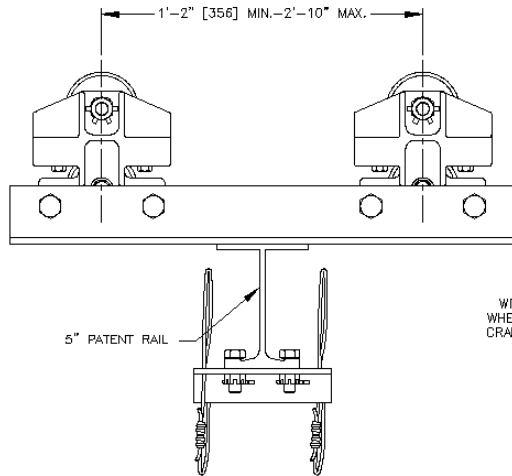
FOR OPERATION ON FLAT RAIL WITH 3.25" [82.6] FLANGE WIDTH OR SPECIAL FLAT TRACK WITH 3.33" [84.6] FLANGE WIDTH



FOR OPERATION ON STANDARD S6 BEAM WITH 3.33" [84.6] FLANGE WIDTH



FOR OPERATION ON STANDARD S4 BEAM WITH 2.66" [67.6] FLANGE WIDTH



• ALL DIMENSIONS ARE REFERENCE ONLY

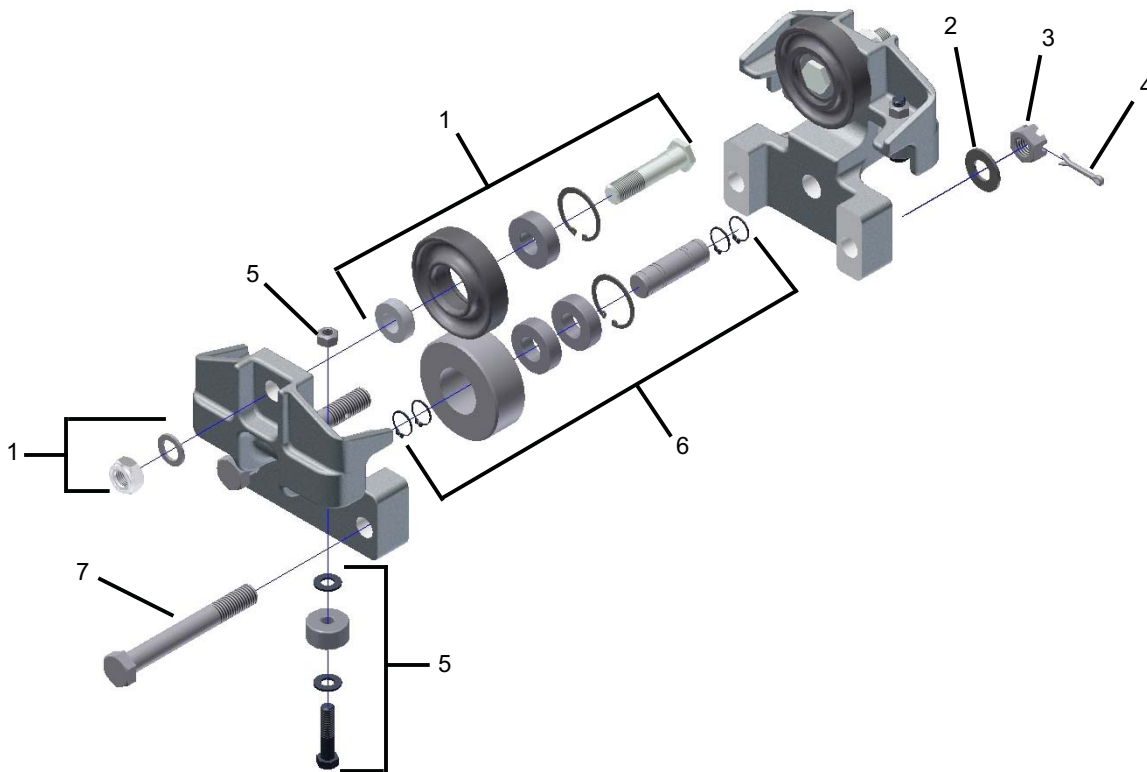
MBC-500 WITH KICKUP WHEELS
MBC-500-S4 WITH KICKUP WHEELS

REF.	STOCK CODE	DESCRIPTION	QUANTITY		
1	30095	3.2 Flat Wheel Assembly	2		
		3.2" Flat Wheel	2		
		Snap Ring	2		
		Wheel Bearing	2		
		Stud	2		
		Spacer	2		
		5/8" Wheel Stud Washer	2		
		5/8" Nylon Insert Jam Nut	2		
		2	53070	5/8" Washer	2
				5/8" Slotted Hex Nut	2
3	52290	5/32" Cotter Pin	2		
4	54083	Guide Roller Sub-Assembly	4		
5	15010	3021 1.25" Guide Roller	4		
		3/8" Hex Bolt	4		
		3/8" Top Lock Nut	4		
		3/8" Washer	8		
		Double Bearing Kick-Up Wheel Assembly	1		
6	30080	3.12" Double Bearing Kick-Up Wheel	1		
		Wheel Bearing	2		
		Snap Ring	1		
		Snap Ring	4		
		Double Bearing Kickup Axle	1		
7	51110	5/8" Hex Bolt	2		

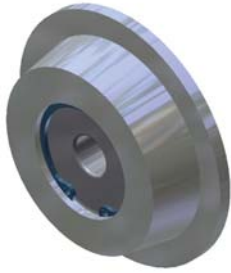
MBC-500 and MBC-500-S4 WITH KICKUP WHEELS OPTIONS

(See Page 19 for Optional Wheels)

STOCK CODE		DESCRIPTION
30110	3050	3.2" Contour Wheel Assembly
30370	3065	3.2" Flanged Brass Wheel Assembly
30420	3017	4" Flat Conveyor Wheel Assembly
30430	3018	4" Contour Conveyor Wheel Assembly



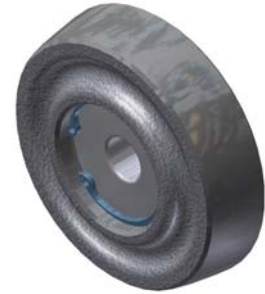
OPTIONAL WHEEL ASSEMBLIES



2" DIA. FLANGED WHEEL
3039 - Contour (Shown) (30020)



2" DIA. BRAS FLANGED WHEEL
Flat (Shown) (30365)



2.4" DIA. WHEEL
3053 - Contour (Shown) (30060)



3.2" DIA. WHEEL
3050 - Contour (Shown) (30110)



4" DIA. CONVEYOR WHEEL
3017 - Flat (Shown) (30420)
3018 - Contour (30430)



BRASS
3.2" DIA. FLANGED WHEEL
3065 - Flat or Contour Brass (30370)