

Part Number

- **10220** SAC-1020-325 for operation on 3.25"/3.33" flange flat rail. 1000 lb. Rated Load
- **10221** SAC-1020-333 for operation on 3.33" flange 6" S-Beam. 1000 lb. Rated Load
- **10222** SAC-1020-325D for operation on 3.25"/3.33" flange flat rail. 1500 lb. Rated Load
- **10223** SAC-1020-333D for operation on 3.33" flange 6" S-Beam. 1500 lb. Rated Load

Applications

- Used in pairs for bridge crane end truck assemblies where runway spans are not parallel

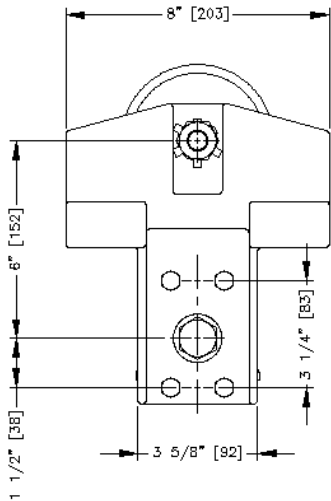
Features

- High tensile almag alloy frames
- Built-in safety lugs, integral in frames
- 4.62" diameter drop forged steel load wheels with low friction sealed bearings permanently lubricated
- Hardened and ground ball bearing side thrust rollers
- Steel self-aligning pin
- Brass wear plate

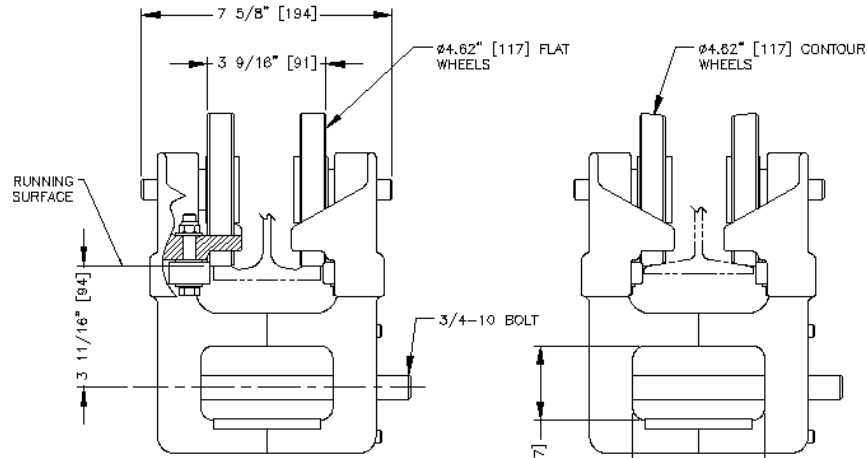
Options

- Dual bearing for greater rated loads up to 1500 pounds designated by the D at the end of the description

© Copyright 2010, Unified Industries, Inc. www.unified-ind.com



COMMON SIDE VIEW



10220 SAC-1020-325

FOR OPERATION ON STANDARD
FLAT RAIL WITH 3.25" [82.6]
FLANGE WIDTH.
1000 LBS. RATED LOAD

10221 SAC-1020-333

FOR OPERATION ON S6 BEAM
WITH 3.33" [84.6] FLANGE WIDTH.
1000 LBS. RATED LOAD

TROLLEY SPECIFICATIONS

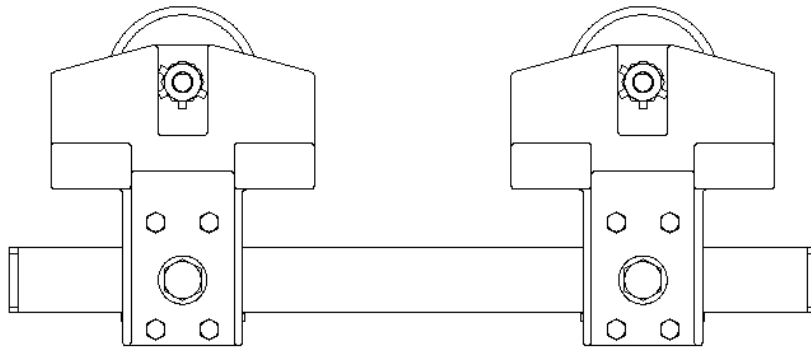
RATED LOAD:
1000 LBS (448 Kgs)
1500 LBS (672 Kgs)
WEIGHT: 18.5 LBS (8.3 Kgs)
BODY: HIGH TENSILE ALMAG
WHEEL:
4.62" [117.3] DIA.
4.50" [114.3] DIA. FLANGED
5/8" [15.9] DIA. STUD
SIDE THRUST ROLLERS: BALL BEARING
(AS REQ'D)

NOTE:

WHEN ORDERING SPECIFY EXACT WIDTH OF
RUNNING SURFACE FLANGE:
3.25" [82.6] FOR FLAT RAIL
3.33" [84.6] FOR S6 BEAM
SPECIFY 1000 LBS OR 1500 LBS
RATED LOAD.

APPLICATION:

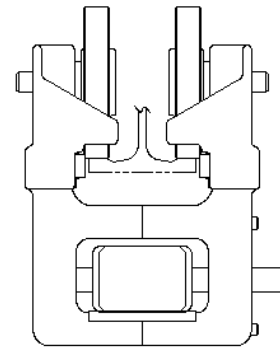
PAIR UP FOR BRIDGE CRANE END TRUCK
ASSEMBLIES IF RUNWAY SPAN IS NOT PARALLEL.



COMMON SIDE VIEW

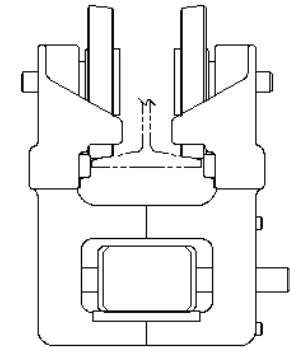
SAC-1020 LOAD BAR ASSEMBLY

AVAILABLE IN VARIOUS LENGTHS



10222 SAC-1020-325D

FOR OPERATION ON STANDARD
FLAT RAIL WITH 3.25" [82.6]
FLANGE WIDTH.
1500 LBS. RATED LOAD



10223 SAC-1020-333D

FOR OPERATION ON S6 BEAM
WITH 3.33" [84.6] FLANGE WIDTH.
1500 LBS. RATED LOAD

- ALL DIMENSIONS ARE REFERENCE ONLY

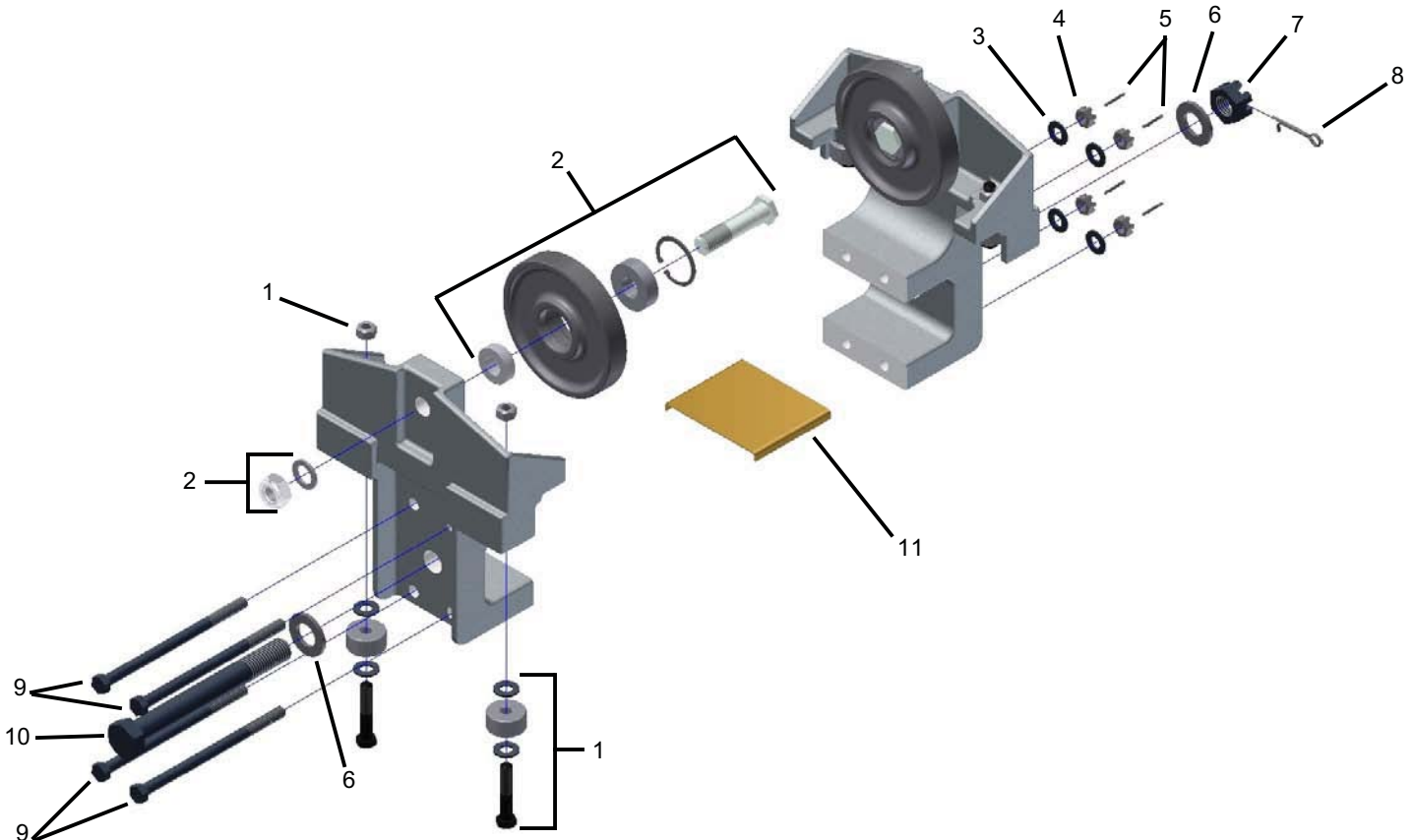
SAC-1020

REF.	STOCK CODE	DESCRIPTION	QUANTITY
1	15020	Guide Roller Sub-Assembly	4
		3021 1.25" Guide Roller	4
		3/8" Hex Bolt	4
		3/8" Top Lock Nut	4
		3/8" Washer	8
2	30250	3011 Flat Wheel Sub-Assembly	2
		4.6" Flat Wheel	2
		Snap Ring	2
		Wheel Bearing	2
		Stud	2
		Spacer	2
		5/8" Wheel Stud Washer	2
		5/8" Nylon Insert Jam Nut	2
3	53040	3/8" Washer	4
4	52110	3/8" Slotted Hex Nut	4
5	54010	3/32" Cotter Pin	4
6	53080	3/4" Washer	2
7	52370	3/4" Slotted Hex Nut	1
8	54083	5/32" Cotter Pin	1
9	50610	3/8" Hex Bolt	4
10	51390	3/4" Hex Bolt	1
11	75040	SAC-1020 Brass Pad	1

SAC-1020 OPTIONS

(See Page 20 for Optional Wheels)

STOCK CODE	STOCK CODE	DESCRIPTION
30270	3029	4.6" Contour Wheel Assembly
30290	3005	4.6" Double, Flat Wheel Assembly
30240	3038	4.6" Double, Contour Wheel Assembly
30380	3054	4.6" Flanged Bronze Wheel Assembly



OPTIONAL WHEEL ASSEMBLIES



BRASS
4.5" DIA. FLANGED WHEEL
3030 - Flat or Contour / Brass (30380)



4.62" DIA. WHEEL
3029 - Contour (Shown) (30270)
Single Bearing
3011 - Flat (30250)
3005 - Flat / Double Bearing (30290)
3038 - Contour / Double Bearing (30240)



4.8" DIA. WHEEL
3047 - Contour (Shown) (30320)
3046 - Flat (30300)



BRASS
4.8" DIA. FLANGED WHEEL
3061 - Flat (Shown) or Contour Brass
(30390)