**Part Number**

- **10230** SAC-500-2 for operation on 3.25" or 3.33" flange flat rail or
- **10231** SAC-500-2-4 for operation on 3.33" flange 6" S-Beam
- **10240** SAC-500-2-4 for operation on 2.66" flange 4" S-Beam

Application

- Used in pairs for bridge crane end trucks where gage of span is not parallel

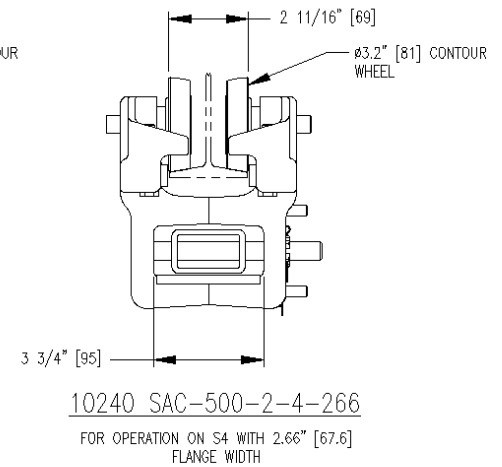
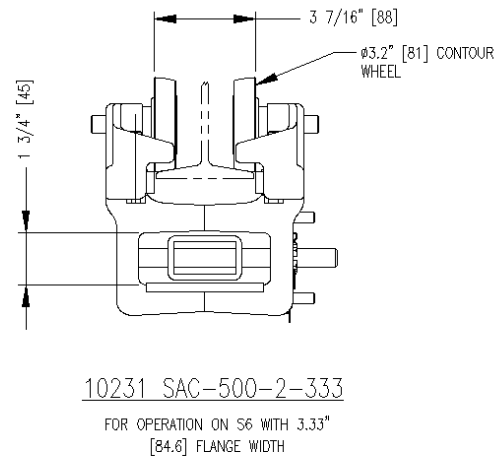
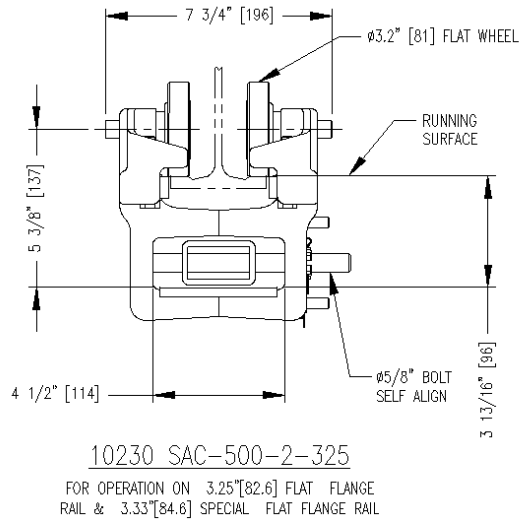
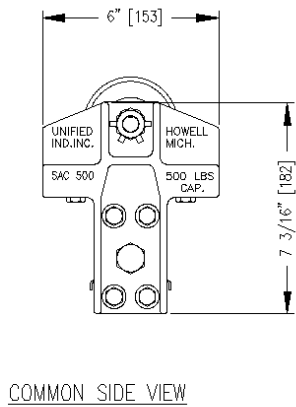
Features

- High tensile almag alloy frames
- Integral built in safety lugs
- Shielded side thrust roller protection
- Hardened ball bearing side thrust rollers
- Forged wheels 3.2" diameter flat or contoured induction hardened with permanently sealed precision ball bearings
- Load bearing brass wear plate
- Hardened steel self aligning bolt
- Trolley is designed to seek center of runway rail

Options

- Standard conveyor wheels 3.2" diameter flat or contoured with lubricated ball bearings
- Can be furnished as an assembled end truck

© Copyright 2010, Unified Industries, Inc. www.unified-ind.com



• ALL DIMENSIONS ARE REFERENCE ONLY

APPLICATIONS FOR SAC-500 TROLLEYS

USE IN PAIRS FOR BRIDGE CRANE END TRUCK

TROLLEY SPECIFICATIONS

RATED LOAD: 500LBS. (224Kgs)
 WEIGHT: 10.5LBS. (4.70Kgs)
 BODY: HIGH TENSILE ALMAG
 WHEELS: Ø3.2" [82.6]
 STUD: Ø5/8" [16]
 ROLLERS: BALL THRUST BEARINGS

NOTES:

ALL SAC-500 TROLLEYS COME WITH A BRASS WEAR PLATE. WHEN ORDERING PLEASE SPECIFY WIDTH OF RUNNING SURFACE FLANGE.
 (1) 3.25" [82.6] FOR STD. & SPECIAL FLAT RAIL.
 (2) 2.66" [67.6] FOR S4 BEAM
 (3) 3.33" [84.6] FOR S6 BEAM
 AVAILABLE WITH FLAT OR CONTOUR WHEELS.

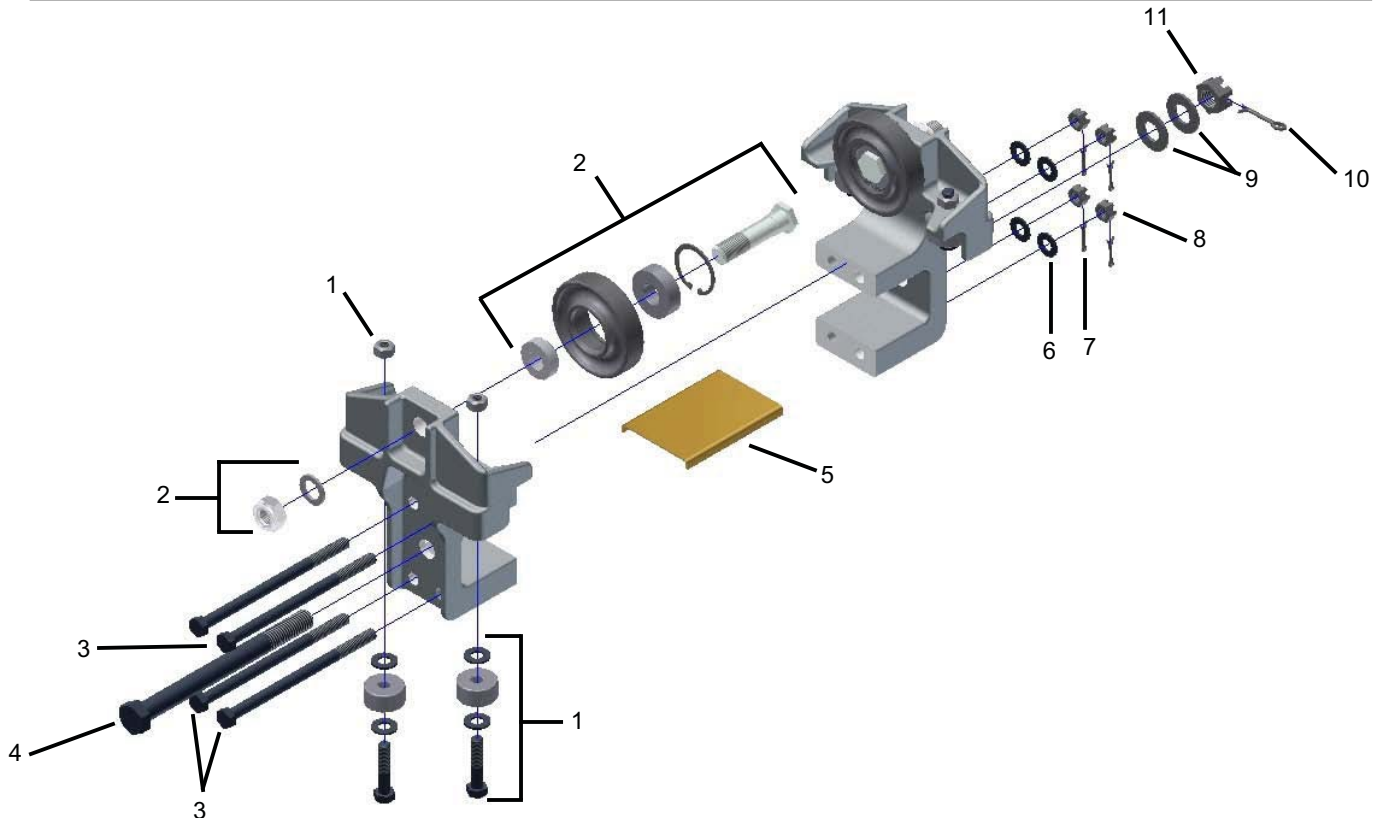
**SAC-500-2
SAC-500-2-4**

REF.	STOCK CODE	DESCRIPTION	QUANTITY
1	15010	Guide Roller Sub-Assembly	4
		3021 1.25" Guide Roller	4
		3/8" Hex Bolt	4
		3/8" Top Lock Nut	4
		3/8" Washer	8
2	30090	3049 Flat Wheel Sub-Assembly	2
		3.2" Flat Wheel	2
		Snap Ring	2
		Wheel Bearing	2
		Stud	2
		Spacer	2
		5/8" Wheel Stud Washer	2
		5/8" Nylon Insert Jam Nut	2
3	50610	3/8" Hex Bolt	4
4	51170	5/8" Hex Bolt	1
5	75050	SAC-500 Brass Pad	1
6	53040	3/8" Washer	4
7	54010	3/32" Cotter Pin	4
8	52110	3/8" Slotted Hex Nut	4
9	53070	5/8" Washer	1
10	54083	5/32" Cotter Pin	1
11	52290	5/8" Slotted Hex Nut	1

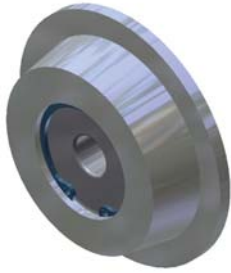
SAC-500-2 and SAC-500-2-4 OPTIONS

(See Page 19 for Optional Wheels)

STOCK CODE	STOCK CODE	DESCRIPTION
30110	3050	3.2" Contour Wheel Assembly
30370	3065	3.2" Flanged Bronze Wheel Assembly
30420	3017	4" Flat Conveyor Wheel Assembly
30430	3018	4" Contour Conveyor Wheel Assembly



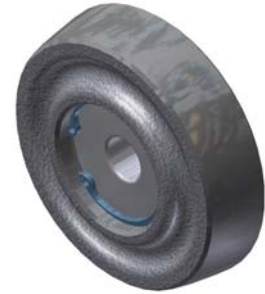
OPTIONAL WHEEL ASSEMBLIES



2" DIA. FLANGED WHEEL
3039 - Contour (Shown) (30020)



2" DIA. BRAS FLANGED WHEEL
Flat (Shown) (30365)



2.4" DIA. WHEEL
3053 - Contour (Shown) (30060)



3.2" DIA. WHEEL
3050 - Contour (Shown) (30110)



4" DIA. CONVEYOR WHEEL
3017 - Flat (Shown) (30420)
3018 - Contour (30430)



BRASS
3.2" DIA. FLANGED WHEEL
3065 - Flat or Contour Brass (30370)