**Part Number**

- **10340** UT-1000-LL-325 for operation on 3.25"/3.33" flange flat track
- **10341** UT-1000-LL-333 for operation on 3.33" flange 6" S-Beam
- **10342** UT-1000-LL-266 for operation on 2.66" flange 4" S-Beam
- **10343** UT-1000-S-325 for operation on 3.25"/3.33" flange flat track
- **10344** UT-1000-S-333 for operation on 3.33" flange 6" S-Beam
- **10345** UT-1000-S-266 for operation on 2.66" flange 4" S-Beam
- **10346** UT-1000-YBC-325 for operation on 3.25"/3.33" flange flat track
- **10347** UT-1000-YBC-333 for operation on 3.33" flange 6" S-Beam
- **10348** UT-1000-YBC-266 for operation on 2.66" flange 4" S-Beam

Application

- Suspension of weld gun balancers, hoists, nut runners, rivet guns, hand tools, fixtures, etc.
- Used in pairs for load bars

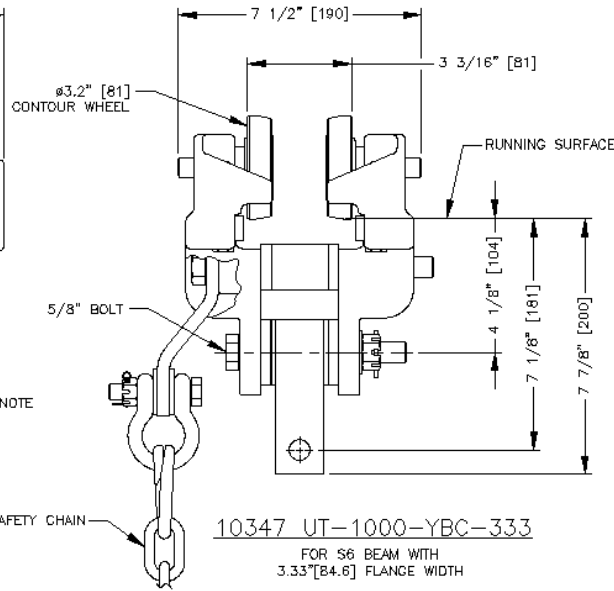
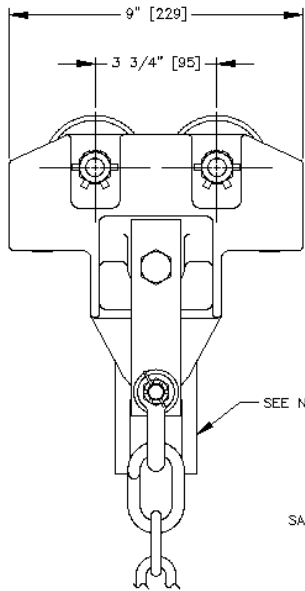
Features

- High tensile almag alloy frames
- Built-in safety lugs, Integral in almag frames
- Shielded side guide rollers
- Safety eye bolt penetrates through both almag trolley frames
- Independent load bearing bolt
- Forged 3.2" diameter wheels flat or contoured induction hardened with permanently sealed precision ball bearings
- Hardened and ground ball bearing side guide rollers
- Minimum track radius is 24"
- Fully adjustable with stored spacers to allow for adjustment to the rail sizes at left

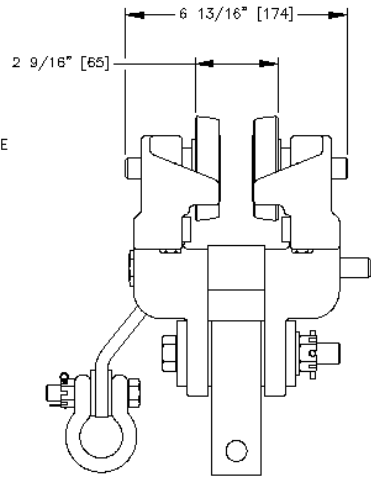
Options

- UT-1000-YB dielectrically insulated yoke block, safety strap and shackle
- UT-1000-LL non-insulated with forged through eyebolt, spool and load link
- UT-1000-S non-insulated with spool
- 3.2" dia. flat or contour load wheel
- Lubricated hardened and ground steel wheel (standard)
- Permanently lubricated forged steel wheels induction hardened

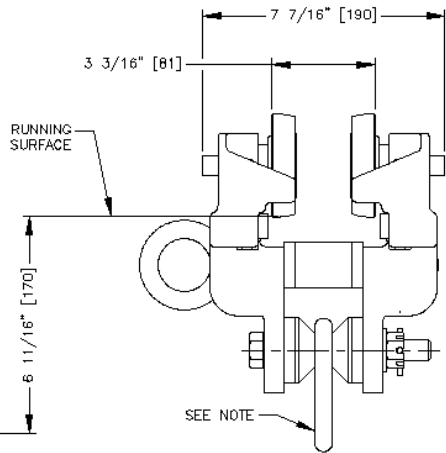
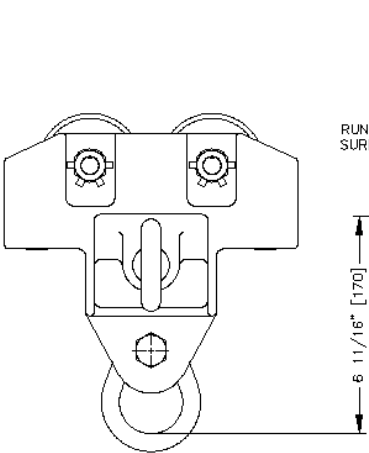
© Copyright 2010, Unified Industries, Inc. www.unified-ind.com



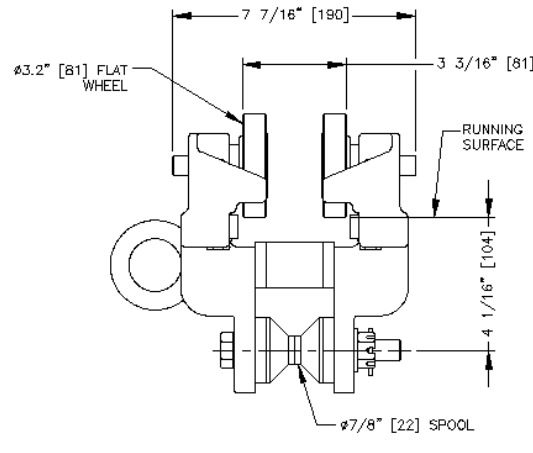
10347 UT-1000-YBC-333
FOR S6 BEAM WITH
3.33"[84.6] FLANGE WIDTH



10348 UT-1000-YBC-266
FOR S4 BEAM WITH
2.66"[67.6] FLANGE WIDTH



10341 UT-1000-LL-333
FOR S6 BEAM WITH
3.33"[84.6] FLANGE WIDTH



10343 UT-1000-S-325
FOR FLAT RAIL WITH
3.25"[82.6] FLANGE WIDTH

TROLLEY SPECIFICATIONS

RATED LOAD: 1,000 LBS (448 Kgs)
WEIGHT: 18 LBS (8.1 Kg) TO 18.5 LBS (8.3 Kgs)
BODY: HIGH TENSILE ALMAG.
WHEELS: ø3.2" [81.3] WITH A ø5/8" STUD
THRUST ROLLERS: BALL BEARING HARDENED
AND GROUND

OPTION:

SAFETY CHAIN CONSISTING OF TWO REPAIR LINKS
AND FIVE LINKS OF 3/8" TRIPLE "B" CHAIN

NOTE:

UT-1000-YBC TROLLEY 5/8" DIA. GRADE 5 BOLT
SUPPLIED UPON REQUEST FOR HOOK OR YOKE
MOUNTED EQUIPMENT.
UT-1000-LL TROLLEY 5/8" DIA. LOAD LINK FOR
HOOK MOUNTED EQUIPMENT.
UT-1000-S TROLLEY 7/8" DIA. SPOOL FOR HOOK
MOUNTED EQUIPMENT.
NON-INSULATED UT-1000-LL OR UT-1000-S
INSULATED UT-1000-YB
WHEN ORDERING SPECIFY WIDTH OF RUNNING
SURFACE FLANGE.
(1) 3.25" [82.6] FOR FLAT RAIL
(2) 3.33" [84.6] FOR S6 BEAM
(3) 2.66" [67.6] FOR S4 BEAM

- ALL DIMENSIONS ARE REFERENCE ONLY

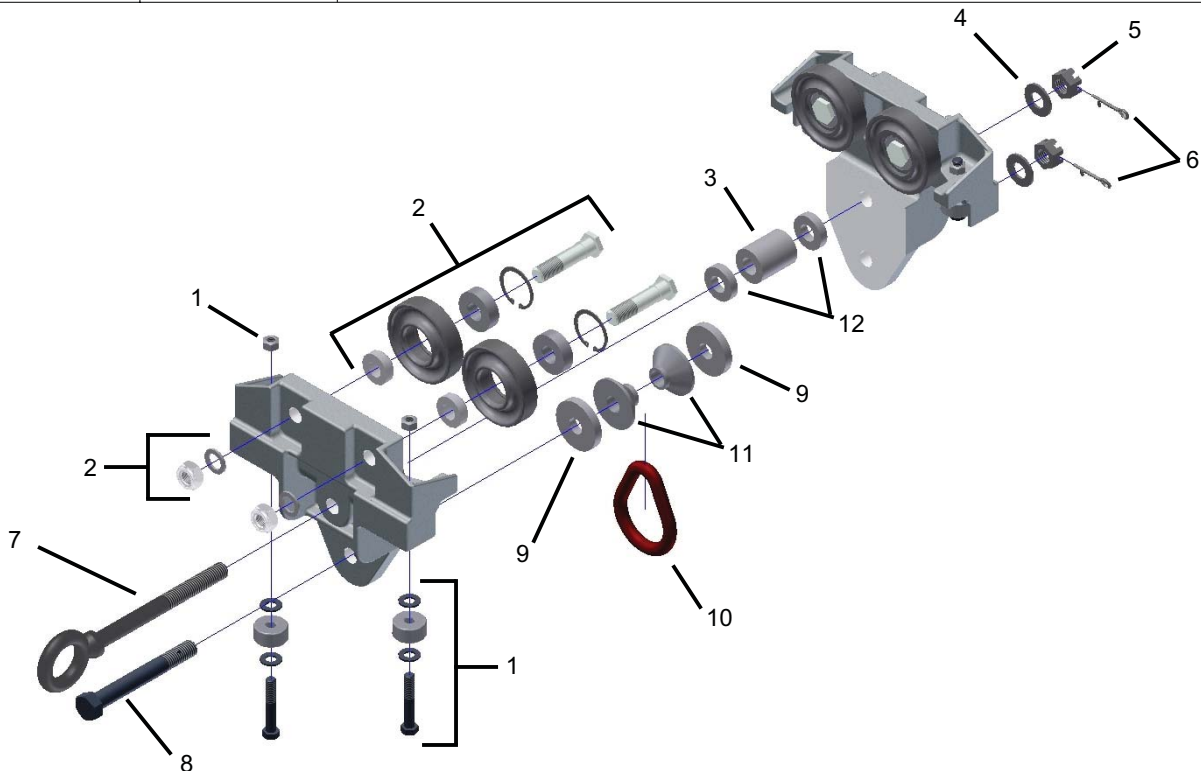
**UT-1000-S
UT-1000-LL**

REF.	STOCK CODE	DESCRIPTION	QUANTITY
1	15020	Guide Roller Sub-Assembly	4
		3021 1.25" Guide Roller	4
		3/8" Hex Bolt	4
		3/8" Top Lock Nut	4
		3/8" Washer	8
2	30095	3.2 Flat Wheel Sub-Assembly	4
		3.2" Flat Wheel	4
		Snap Ring	4
		Wheel Bearing	4
		Stud	4
		Spacer	4
		5/8" Wheel Stud Washer	4
		5/8" Nylon Insert Jam Nut	4
3	55660	#4 UT Spacer	1
4	53070	5/8" Washer	2
5	55229	5/8" Slotted Hex Nut	2
6	54083	5/32" Cotter Pin	1
7	50110	5/8" Eye Bolt	1
8	51100	5/8" Hex Bolt	1
9	55700	#10 UT Spacer	2
10	72010	1/2" Sling Link (For UT-1000-LL Only)	1
11	78440	UT-1000 Spool	2
12	55670	#5 UT Spacer	2

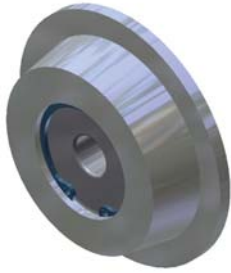
UT-1000-S and UT-1000-LL OPTIONS

(See Page 19 for Optional Wheels)

STOCK CODE		DESCRIPTION
30110	3050	3.2" Contour Wheel Assembly
30370	3065	3.2" Flanged Brass Wheel Assembly
30420	3017	4" Flat Conveyor Wheel Assembly
30430	3018	4" Contour Conveyor Wheel Assembly



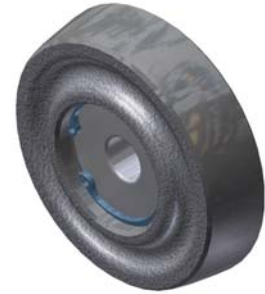
OPTIONAL WHEEL ASSEMBLIES



2" DIA. FLANGED WHEEL
3039 - Contour (Shown) (30020)



2" DIA. BRAS FLANGED WHEEL
Flat (Shown) (30365)



2.4" DIA. WHEEL
3053 - Contour (Shown) (30060)



3.2" DIA. WHEEL
3050 - Contour (Shown) (30110)



4" DIA. CONVEYOR WHEEL
3017 - Flat (Shown) (30420)
3018 - Contour (30430)



BRASS
3.2" DIA. FLANGED WHEEL
3065 - Flat or Contour Brass (30370)

UT-1000-YBC

REF.	STOCK CODE	DESCRIPTION	QUANTITY
1	15020	Guide Roller Sub-Assembly	4
		3021 1.25" Guide Roller	4
		3/8" Hex Bolt	4
		3/8" Top Lock Nut	4
		3/8" Washer	8
2	30095	3.2 Flat Wheel Sub-Assy.	4
		3.2" Flat Wheel	4
		Snap Ring	4
		Wheel Bearing	4
		Stud	4
		Spacer	4
		5/8" Wheel Stud Washer	4
		5/8" Nylon Insert Jam Nut	4
3	55670	#5 UT Spacer	2
4	53070	5/8" Washer	2
5	52290	5/8" Slotted Hex Nut	2
6	54083	5/32" Cotter Pin	2
7	15150	Safety Strap Sub-Assembly	1
		5/8" Hex Bolt	1
		UT Safety Strap	1
		#12 UT Nylon Bushing	1
		#13 UT Nylon Bushing	1
		Anchor Shackle	1
		1/2" Hex Bolt	1
		1/2" Slotted Hex Nut	1
		1/8" Cotter Pin	1
		3/8" x 2 Repair Links	2
		3/8" BB Chain - Links	5
8	51100	5/8" Hex Bolt	1
9	55700	#10 UT Spacer	2
10	15085	Yoke Block Sub-Assembly	1
		Yoke Block - Aluminum	1
		#8 UT Spacer	1
		#9 UT Spacer	1
		#6 UT Nylon Bushing	1
		#7 UT Nylon Bushing	1
11	55660	#4 UT Spacer	1

UT-1000-YBC OPTIONS

(See Page 19 for Optional Wheels)

STOCK CODE		DESCRIPTION
30110	3050	3.2" Contour Wheel Assy.
30370	3065	3.2" Flanged Brass Wheel Assy.
30420	3017	4" Flat Conveyor Wheel Assy.
30430	3018	4" Contour Conveyor Wheel Assembly

