**Part Number**

- **10350** UT-500-LL-325 For operation on 3.25"/3.33" flange flat rail
- **10351** UT-500-LL-333 For operation on 3.33" flange 6" S-Beam
- **10352** UT-500-LL-266 For operation on 2.66" flange 4" S-Beam
- **10353** UT-500-S-325 For operation on 3.25"/3.33" flange flat rail
- **10354** UT-500-S-333 For operation on 3.33" flange 6" S-Beam
- **10355** UT-500-S-266 For operation on 2.66" flange 4" S-Beam

Application

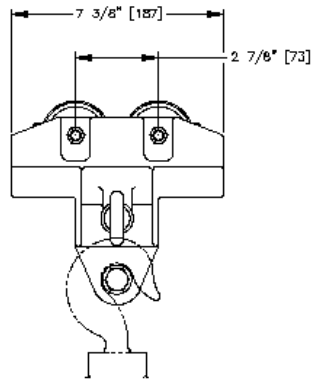
- Suspension of hook mounted spring balancers, hoists, nut runners, rivet guns, hand tools, fixtures, etc.
- Used in pairs for load bars

Features

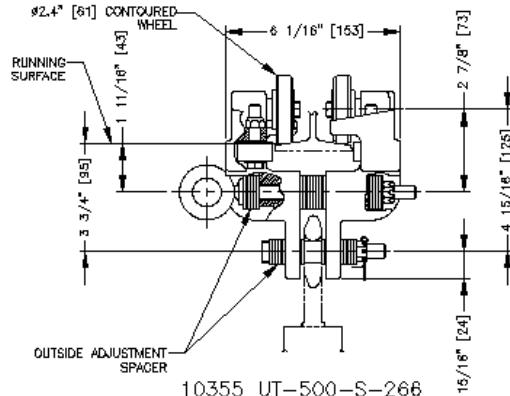
- High tensile almag alloy frames
- Integral built in safety lugs
- Shielded side thrust roller protection
- Safety eye bolt penetrates through both almag trolley frames
- Independent load bearing bolt
- Forged 2.3" diameter wheels flat or contoured induction hardened with permanently sealed precision ball bearings
- Hardened ball bearing side thrust rollers
- Minimum track radius is 18"
- Fully adjustable with stored spacers to allow for adjustment to the rail sizes at left

Options

- UT-500-S with spool and no load link
- UT-500-LL with load link
- Standard conveyor wheel 2.3" diameter flat or contoured with lubricated ball bearings

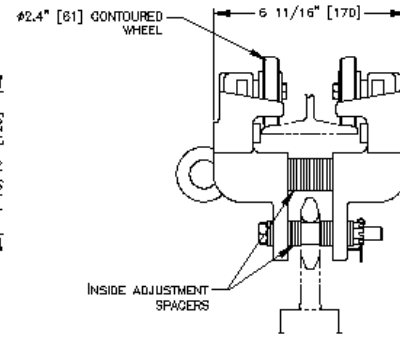


UT-500-S TROLLEYS



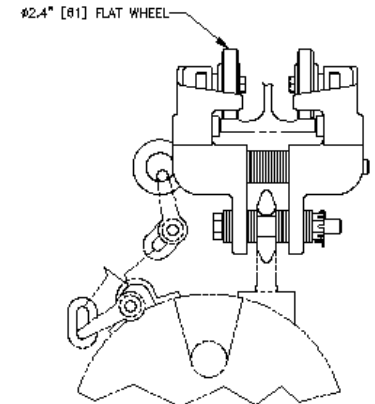
10355 UT-500-S-266

FOR OPERATION ON S4 BEAM WITH 2.86\"/>



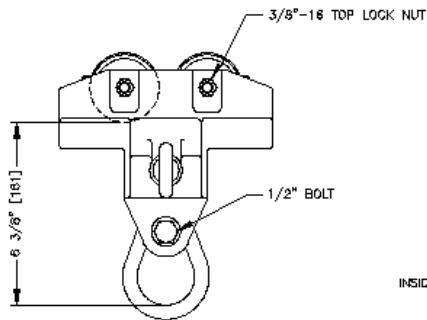
10354 UT-500-S-333

FOR OPERATION ON S6 BEAM WITH A FLANGE WIDTH OF 3.33\"/>

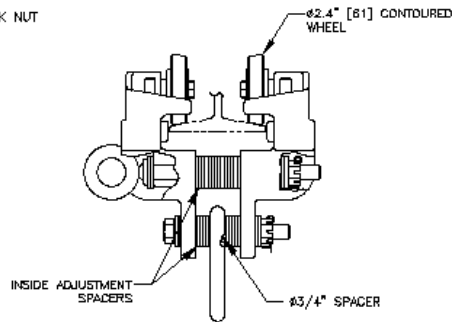


10353 UT-500-S-325

FOR OPERATION ON FLAT RAIL WITH A 3.25\"/>

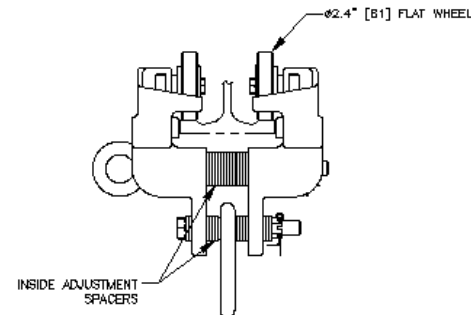


UT-500-LL TROLLEYS



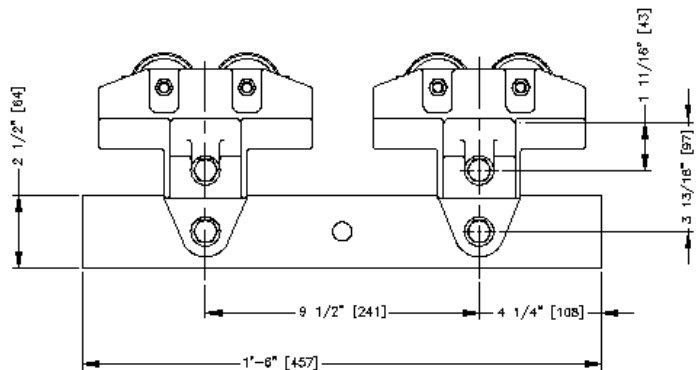
10351 UT-500-LL-333

FOR OPERATION ON S6 BEAM WITH A FLANGE WIDTH OF 3.33\"/>

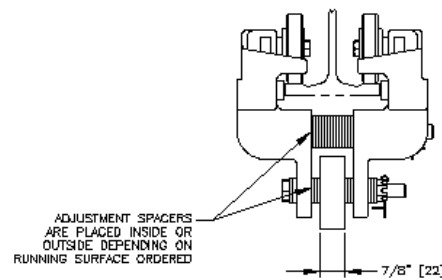


10350 UT-500-LL-325

FOR OPERATION ON FLAT RAIL WITH A 3.25\"/>



COMMON SIDE VIEW



COMMON END VIEW WITH LOAD BAR AND TROLLEY

TROLLEY SPECIFICATIONS:

RATED LOAD: 500 LBS (224 Kgs)
 WEIGHT: 8.2 LBS (4.1 Kgs)
 BODY: HIGH TENSILE ALMAG
 WHEELS: #2.4\"/>

NOTE:

WHEN ORDERING SPECIFY EXACT WIDTH OF RUNNING SURFACE FLANGE.
 (1) 2.86\"/>

OPTIONAL USES:

- (1) USED IN TANDEN WITH A LOAD BAR TO MAX. LOAD OF 1000 LBS (448 Kgs)
- (2) USED FOR BRIDGE CRANE END TRUCKS
- (3) USED FOR HOOK MOUNTED DEVICES. SAFETY CHAINS AND SHACKLES CAN BE ORDERED FOR HOOK MOUNTED DEVICES

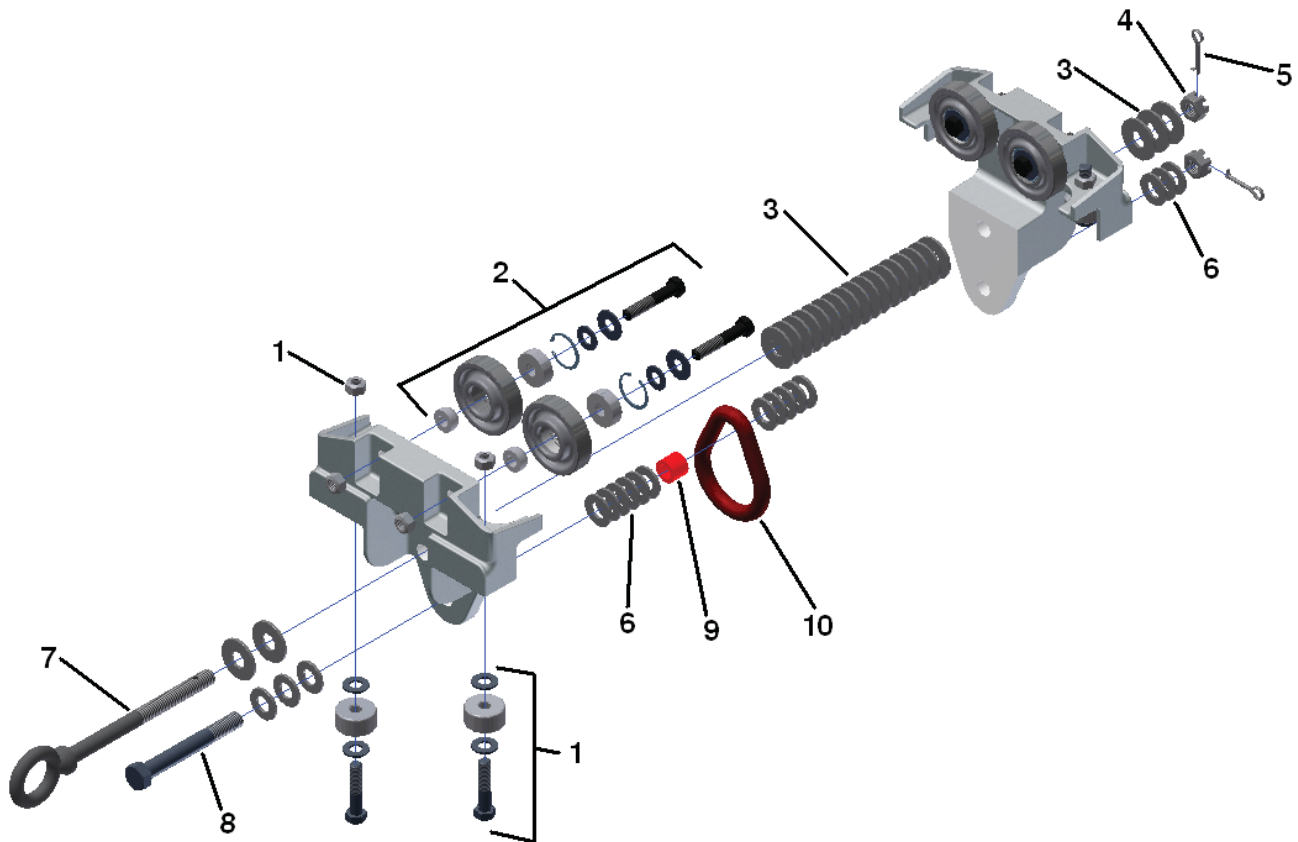
• ALL DIMENSIONS ARE REFERENCE ONLY

UT-500-LL
UT-500-S

REF.	STOCK CODE	DESCRIPTION	QUANTITY
1	15010	Guide Roller Sub-Assembly	4
		3021 1.25" Guide Roller	4
		3/8" Hex Bolt	4
		3/8" Nylon Locknut	4
		3/8" Washer	8
2	30040	3052 Flat Wheel Sub-Assembly	4
		2.4" Flat Wheel	4
		Snap Ring	4
		Wheel Bearing	4
		Spacer	4
		3/8" Hex Bolt	4
		3/8" Top Lock Nut	4
		3/8" SAE Washer	4
		3/8" USS Washer	4
3	53140	1/2" USS Washer	17
4	52220	1/2" Slotted Hex Nut	2
5	54040	1/8" Cotter Pin	2
6	53060	1/2" SAE Washer	17
7	50080	1/2" Eyebolt	1
8	58040	1/2" Hex Bolt	1
9	55820	Spacer	1
10	72010	1/2" Sling Link (For UT-500-LL Only)	1

UT-500-LL and UT-500-S OPTIONS
(See Page 19 for Optional Wheels)

STOCK CODE	STOCK CODE	DESCRIPTION
30060	3053	2.4" Contour Wheel Assembly



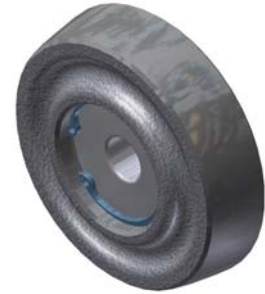
OPTIONAL WHEEL ASSEMBLIES



2" DIA. FLANGED WHEEL
3039 - Contour (Shown) (30020)



2" DIA. BRAS FLANGED WHEEL
Flat (Shown) (30365)



2.4" DIA. WHEEL
3053 - Contour (Shown) (30060)



3.2" DIA. WHEEL
3050 - Contour (Shown) (30110)



4" DIA. CONVEYOR WHEEL
3017 - Flat (Shown) (30420)
3018 - Contour (30430)



BRASS
3.2" DIA. FLANGED WHEEL
3065 - Flat or Contour Brass (30370)