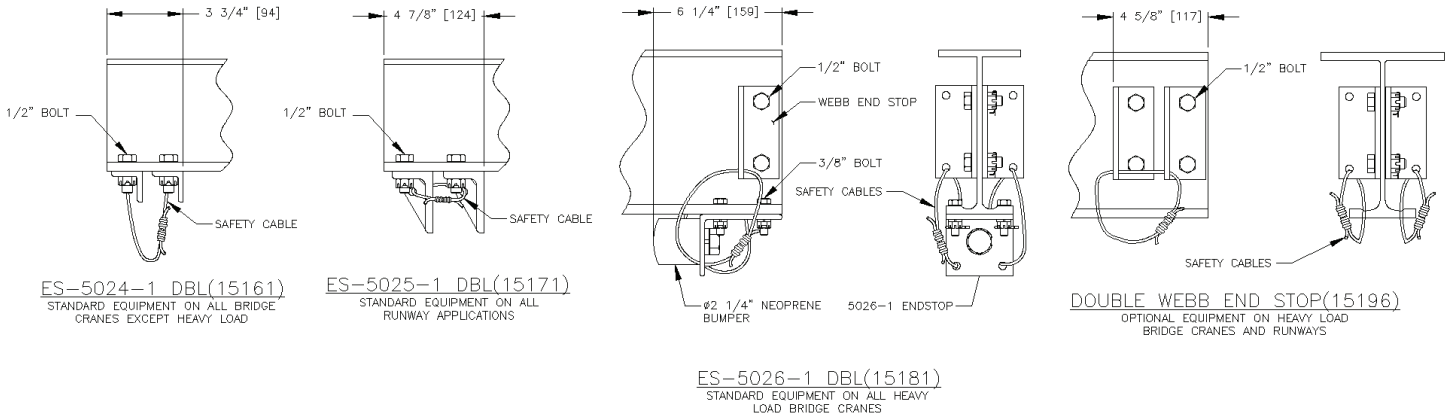
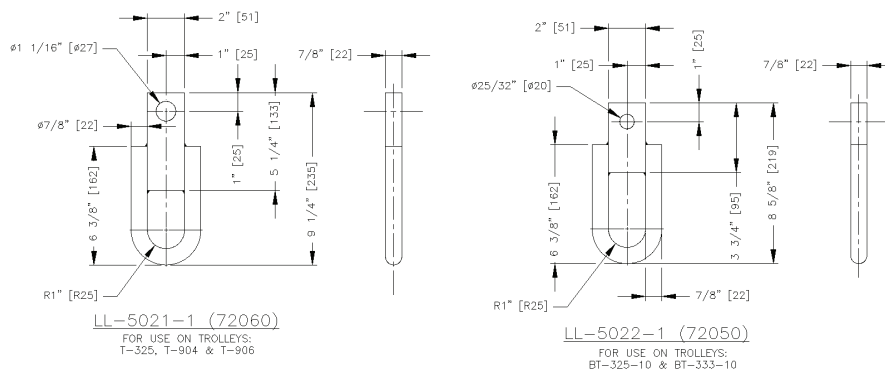




End Stops



Load Links



Model Number

Unified standard redundant end stop

- **15161** ES-5024-1
- Furnished as standard equipment on all **Unified** bridge cranes except heavy load bridge crane

Unified standard redundant end stop

- **15171** ES-5025-1
- Attached with two 1/2" steel bolts
- Will take the impact of the carrier on the end truck or load bar rather than on the load wheel

Unified standard redundant end stop

- **15181** ES-5026-1
- Furnished as standard equipment on all **Unified** heavy load bridge cranes
- Optional on other bridge cranes
- **15196** Double Webb End Stop
- Optional on heavy load bridge cranes and runways

Model Number

- LL-5022-1 for use on **Unified** trolleys **BT-325-10** & **BT-333-10**

Application

Used to suspend a variety of loads such as balancers, hoists, hooks, fixtures etc.