

Model Number

- Series MBC-500 See page 3
- Series MBC-1000 See page 4
- Series MBC-1500 See page 4
- Series BT-325-10 See page 5

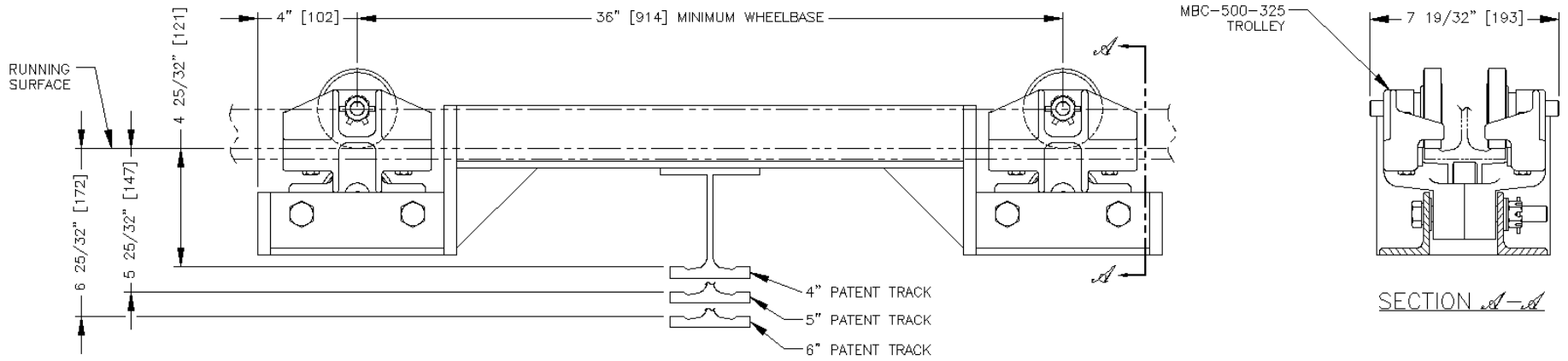
Application

- **Unified** low headroom end trucks are designed for use on bridge cranes that operate in an area of low headroom conditions.
- Or used as individual load bars to your specifications

Features

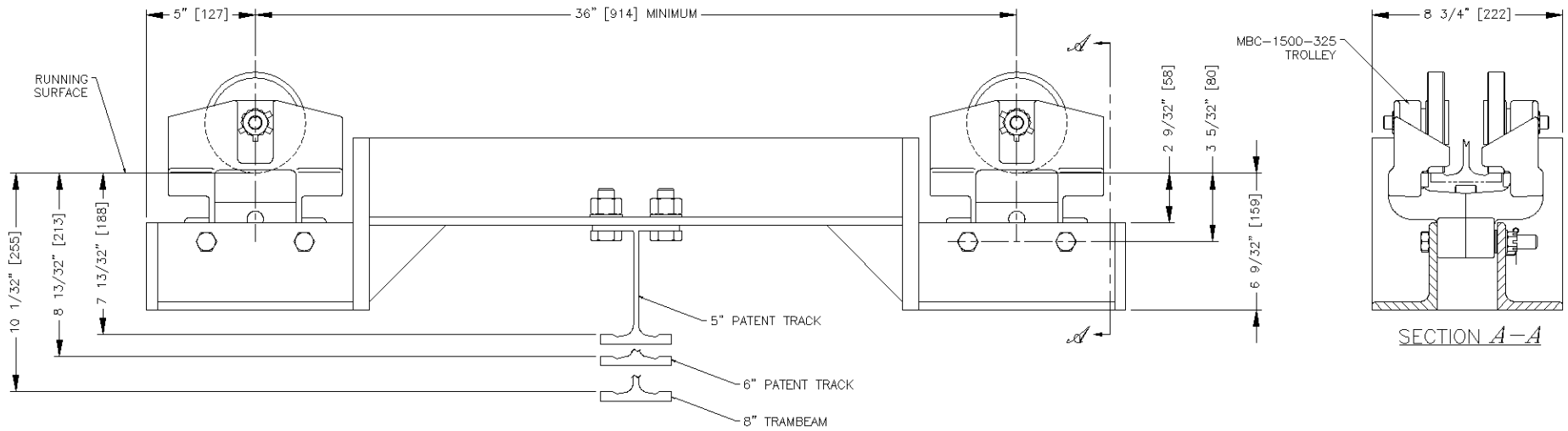
Unified low headroom end trucks are available with three trolley or carrier head adaptations.

- Series BT for bridge cranes with no overhang
- Series MBC-1000 with no kickup wheel for bridge cranes with no overhang or used in conjunction with MBC-1000 with kickup wheel end truck
- Series MBC-1000 for bridge cranes with overhang that requires an end truck with kickup wheels



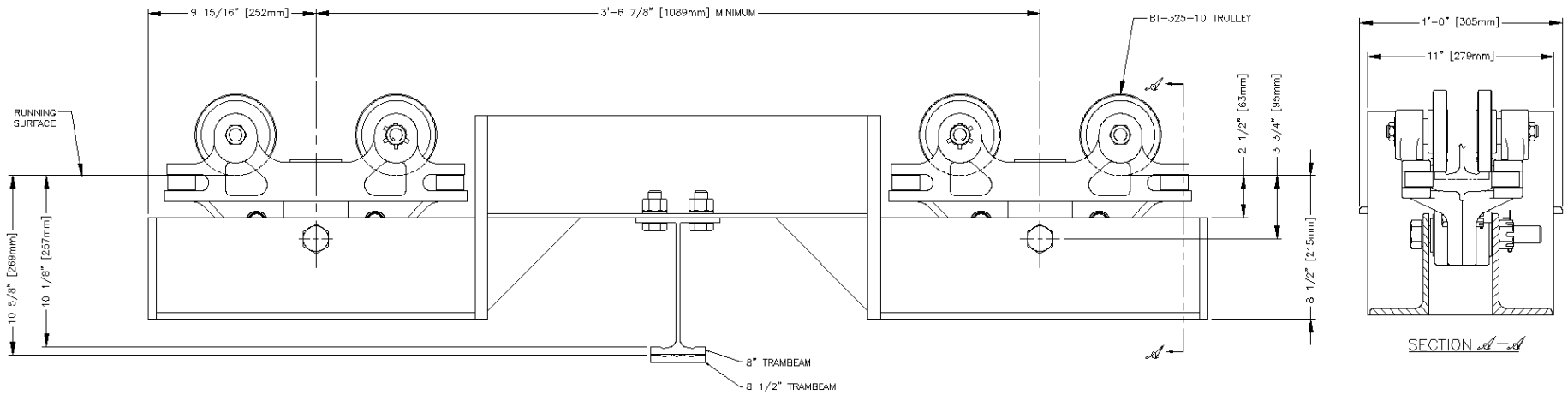
LIGHT LOAD LOW HEADROOM END TRUCK
5" MINIMUM BRIDGE OVERHANG

- OPTIONAL TROLLEYS:**
- (1) MBC-500-4-266 W/O K.U.
 - (2) MBC-500-325 W/D K.U.
 - (3) MBC-500-333 W/D K.U.
 - (4) MBC-500-4-266
 - (5) MBC-500-325
 - (6) MBC-500-333



MEDIUM LOAD LOW HEADROOM END TRUCK
6" MINIMUM BRIDGE OVERHANG

OPTIONAL TROLLEYS:
 (1) MBC-1500-325 W/O KICKUP
 (2) MBC-1500-333 W/O KICKUP
 (3) MBC-1500-333



HEAVY LOAD LOW HEADROOM END TRUCK
7" MINIMUM BRIDGE OVERHANG

OPTIONAL TROLLEY: BT-333-10