



SU-A

SF

SA-C

Travel drives Spare parts list

en-US

Before installing hoist, fill in the information below.
Refer to the Hoist and Motor data plates.

Model No. _____

Serial No. _____

Purchase Date _____

Voltage _____

Rated Load _____





Notes

YALE/SHAWBOX HOIST PARTS AND SERVICES ARE AVAILABLE IN THE UNITED STATES AND IN CANADA

As a Yale/Shawbox Hoist and Trolley user you are assured of reliable repair and parts services through a network of Master Parts Depots and Service Centers that are strategically located in the United States and Canada. These facilities have been selected on the basis of their demonstrated ability to handle all parts and repair requirements promptly and efficiently. To quickly obtain the name of the Master Parts Depot or Service Center located nearest you, call (800) 888-0985, Fax: (716) 689-5644, visit www.cmworks.com

LAS PIEZAS Y REPARACIONES DE LOS POLIPASTOS DE YALE/SHAWBOX ESTÁN ASEGURADAS EN ESTADOS UNIDOS Y CANADÁ

Como usuario de un polipasto y carro de Yale/Shawbox le aseguramos cualquier reparación o la disponibilidad de cualquier pieza de repuesto a través de una red de almacenes de piezas de repuesto y centros de servicio situados estratégicamente en Estados Unidos y Canadá. Estas instalaciones se han seleccionado en base a su capacidad demostrada en la reparación de equipos y suministro de piezas de repuesto de forma rápida y eficaz. Para obtener la dirección del almacén de piezas de repuesto o del centro de servicio más cercano, llame al teléfono (800) 888-0985. Fax: (716) 689-5644, visite www.cmworks.com (sólo en Estados Unidos y Canadá).

LE SERVICE DE RÉPARATION ET DE PIÈCES POUR PALANS YALE/SHAWBOX EST DISPONIBLE AUX ÉTATS-UNIS ET AU CANADA

Soyez assurés qu'en temps d'utilisateur de palan et treuil Yale/Shawbox, d'un service de réparation et de pièces fiable par l'entremise d'un réseau de Centres de service et de Dépôts de pièces maîtresses qui sont stratégiquement situés aux États-Unis et au Canada. Ces établissements ont été sélectionnés sur une base de leur habileté démontrée à s'occuper promptement et efficacement des besoins de réparation de pièces. Appelez le (800) 888-0985, Fax: (716) 689-5644, visite www.cmworks.com pour obtenir rapidement le nom du dépôt de pièces maîtresses ou du centre de service situé le plus près.



Table of contents

Motor A045

Gear SU-A6

Motor 8/2F12.....7

Motor 8/2F12.....8

Motor 8/2F13.....9

Motor 8/2F31..... 11

Motor 8/2F42..... 13

Motor 8/2F52..... 15

Motor 4F18..... 17

Motor 4F38..... 19

Motor 4F48..... 21

Gear SF 11 2.. / SF 18 2.. 23

Gear SF 15 2. 24

Gear SF 17 1. 25

Gear SF 17 2. 26

Intermediate gear SF 25 8..... 27

Gear SF 25 28

Intermediate gear SF 35 8..... 29

Gear SF 35... 30

Gear SA-C 57 31

Gear SA-C 67 33

Torque support 35



General information

The parts lists and illustrations in this section of the manual cover parts for wire rope hoist. A typical hoist is shown as the basis for the exploded parts illustrations; therefore, certain variations may occur from the information given.

For this reason, always correspond with:

1. Hoist Model Number from identification plate.
2. Serial number of the hoist stamped below identification plate.
3. Catalog Number
4. Voltage, phase, hertz from the identification plate.
5. Hoist Capacity
6. Length of lift.
7. Part number of part from parts list.
8. Number of parts required.
9. Part name from parts list.
10. Hoist Serial Number.

Certain parts of your hoist will, in time, require replacement under normal wear conditions. Other items such as gaskets, fasteners, insulators, etc., may be damaged or lost during disassembly. It is suggested that these parts be purchased for your hoist as spares for future use. These parts are listed at the end of this manual.

The numbers assigned to parts of our various assemblies in our Parts List are the part numbers used in manufacturing. Some of these itemized parts are not for individual sale, but must be grouped with other related replacement items.

WHEN ORDERING PARTS OR INFORMATION ON THIS EQUIPMENT, ALWAYS INCLUDE MODEL AND SERIAL NUMBER ON ORDER.

WARNING

Alterations or modifications of equipment and use of non-factory repair parts can lead to dangerous operation and injury.

TO AVOID INJURY:

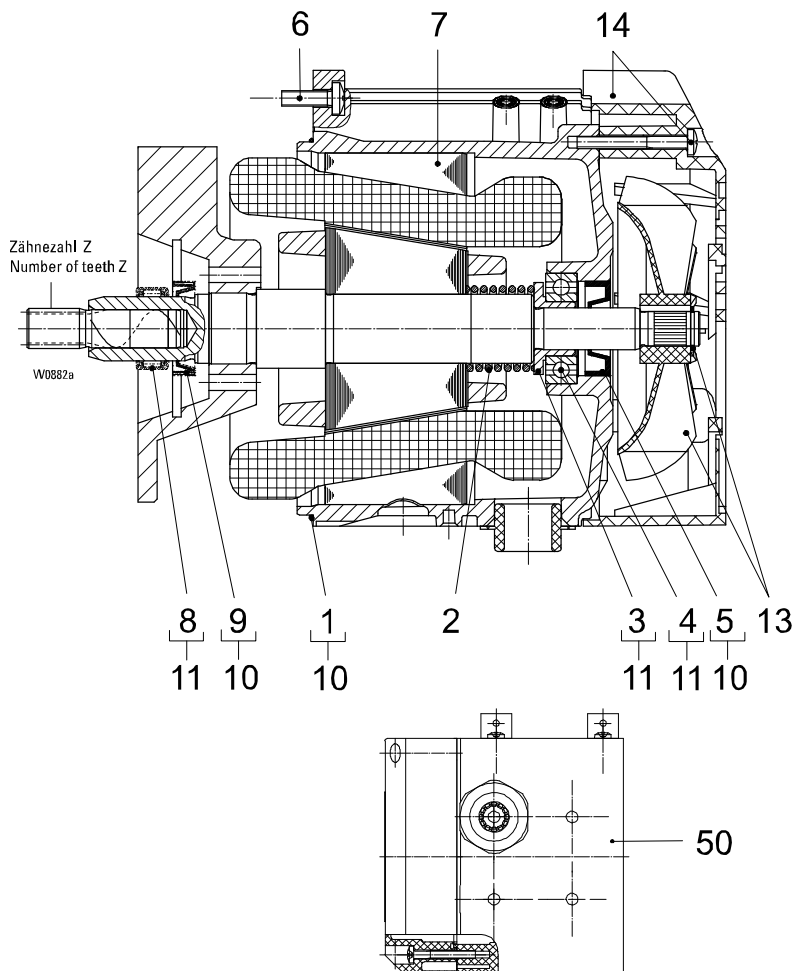
- Do not alter or modify equipment.
- Do use only factory replacement parts.

**PARTS
STAR**[™]
BY COLUMBUS MCKINNON



Replacement and repairs may only be carried out by trained personnel.

Motor A04



Item	Part number	Qty.	Description	Designation	
	A3433066119	1	2A04 S	1) (Pos.1-7) Z=11	Motor
	A3433065119	1	2A04 S	1) (Pos.1-7) Z=13	
	A3433064119	1	2A04 S	1) (Pos.1-7) Z=15	
	A3433063119	1	2A04 S	1) (Pos.1-7) Z=19	
	A3433073119	1	2/8A04 S	1) (Pos.1-7) Z=11	
	A3433074119	1	2/8A04 S	1) (Pos.1-7) Z=13	
	A3433072119	1	2/8A04 S	1) (Pos.1-7) Z=15	
	A3433071119	1	2/8A04 S	1) (Pos.1-7) Z=19	
	A3433069119	1	4/A04 S	1) (Pos.1-7) Z=13	
	A3433067119	1	4/A04 S	1) (Pos.1-7) Z=19	
1	1	116×1.5	Round sealing ring	
2	A3433101940	1		Pressure spring	
3	1		Bushing	
4	1	6003-2RS	Grooved ball bearing	
5	1	13×30×8	Shaft seal	
6	4	5×16	DIN 7500	
7	1		Screw	
8	1		Stator	
9	1		Needle bush	
10	A343300640	1		20×30×7	
11	A3433001640	1		(Pos.1,5,9)	
13	A3433000170	1		(Pos.3,4,8)	
14	A3433000190	1			
50	A1432016910	1			

1) Please state operating voltage and frequency.



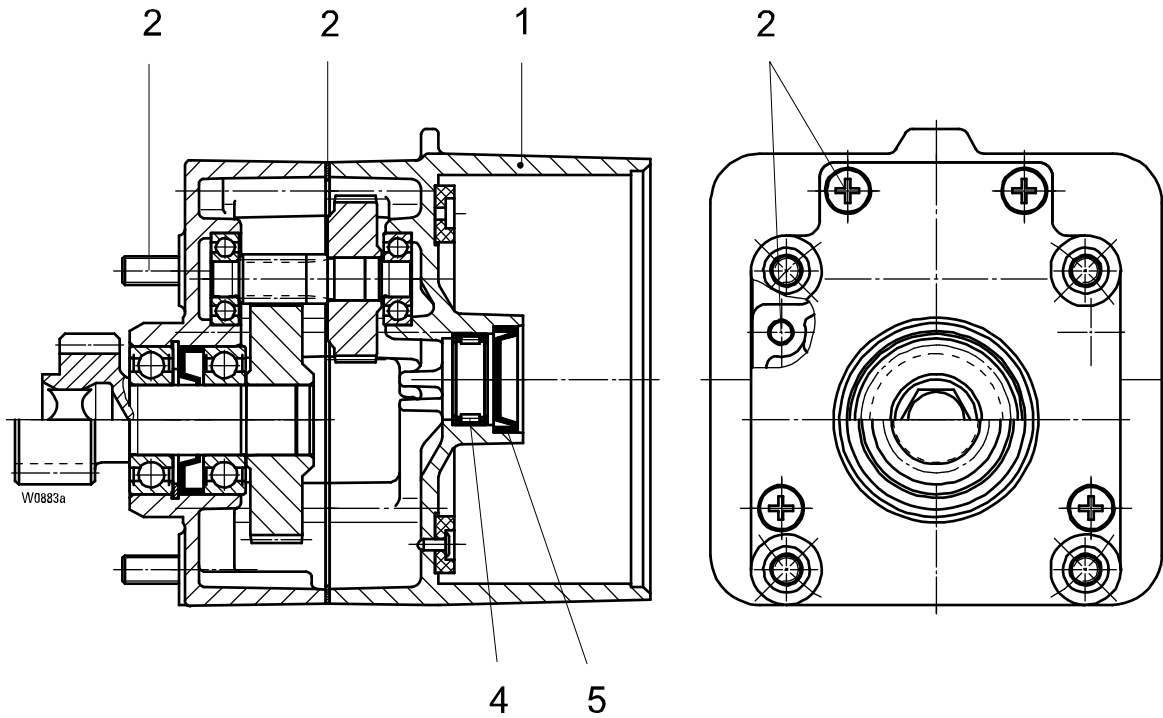
Spare parts list

SU-A / SF / SA-C



Replacement and repairs may only be carried out by trained personnel.

Gear SU-A

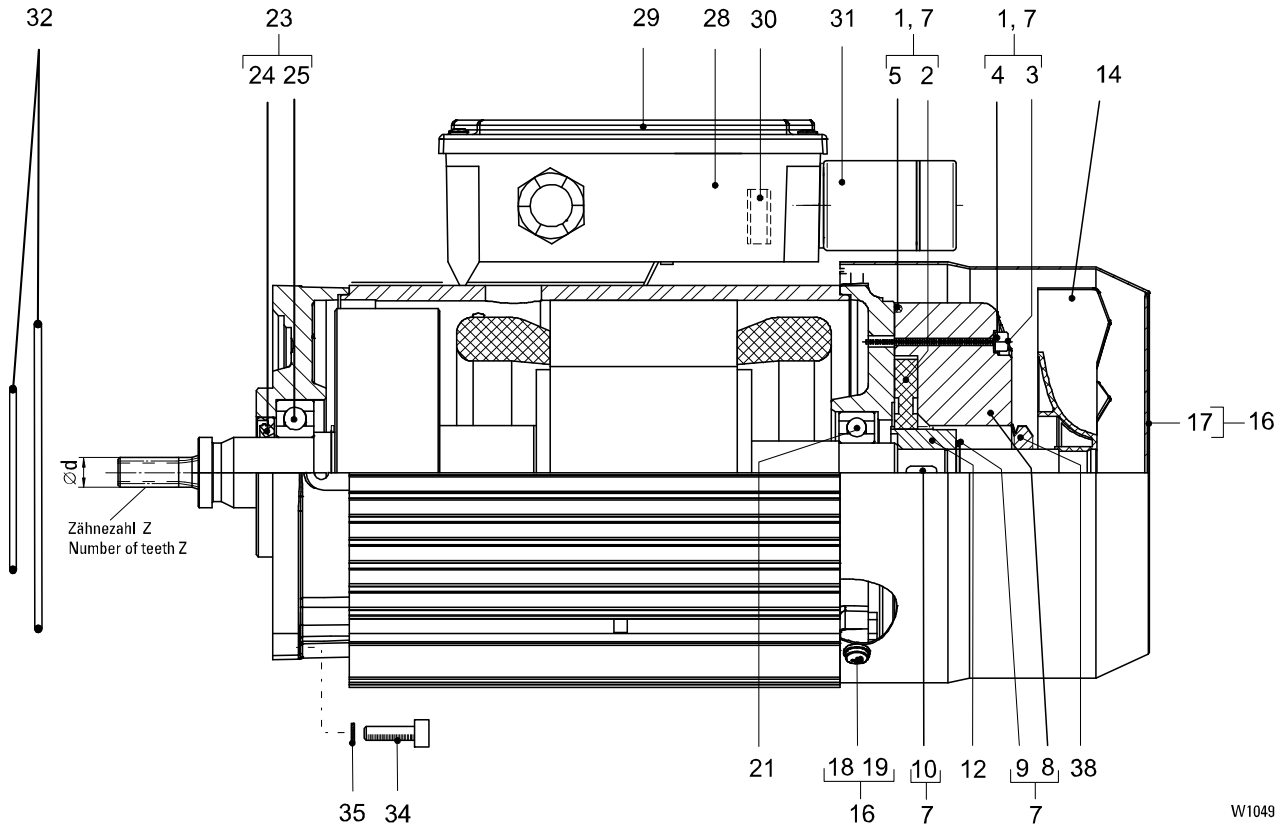


Item	Part number	Qty.	Description	Designation
	A5125004290	1	SU-A 12 4. 110 (Pos.1-5)	Gear complete
	A5125005290	1	SU-A 12 4. 108 (Pos.1-5)	
	A5125006290	1	SU-A 12 4. 106 (Pos.1-5)	
	A5125007290	1	SU-A 12 4. 104 (Pos.1-5)	
	A5125022290	1	SU-A 12 4. 222 (Pos.1-5)	
	A5125023290	1	SU-A 12 4. 220 (Pos.1-5)	
	A5125024290	1	SU-A 12 4. 218 (Pos.1-5)	
	A5125025290	1	SU-A 12 4. 216 (Pos.1-5)	
	A5125026290	1	SU-A 12 4. 214 (Pos.1-5)	
	A5125027290	1	SU-A 12 4. 212 (Pos.1-5)	
	A5125012290	1	SU-A 14 4. 110 (Pos.1-5)	
	A5125013290	1	SU-A 14 4. 108 (Pos.1-5)	
	A5125014290	1	SU-A 14 4. 106 (Pos.1-5)	
	A5125015290	1	SU-A 14 4. 104 (Pos.1-5)	
	A5125034290	1	SU-A 14 4. 222 (Pos.1-5)	
	A5125035290	1	SU-A 14 4. 220 (Pos.1-5)	
	A5125036290	1	SU-A 14 4. 218 (Pos.1-5)	
	A5125037290	1	SU-A 14 4. 216 (Pos.1-5)	
	A5125038290	1	SU-A 14 4. 214 (Pos.1-5)	
	A5125039290	1	SU-A 14 4. 212 (Pos.1-5)	
1	A5125079370	1	SU-A 1 . 4. 1.. (Pos.4+5)	Gear box with brake lining
	A5125078370	1	SU-A 1 . 4. 2.. (Pos.4+5)	
2	A5125001640	1		Gear seal set
4	1	HK2010 1)	Needle bush
5	1	20×30×7 2)	Shaft seal

1) see pos.11 page 5

2) see pos.10 page 5

Replacement and repairs may only be carried out by trained personnel.

Motor 8/2F12


W1049

Item	Part number	Qty.	Description			Z	d [in]	Designation
	A2127087119	1	SF 17 113 123	1)2)	(Pos.1-30)	6	0.38	Motor compl.
	A2127086119	1	SF 17 111 123	1)2)	(Pos.1-30)	7	0.42	
		1	SF 17 219 123	1)2)	(Pos.1-30)			
		1	SF 15 226 123	1)2)	(Pos.1-30)			
		1	SF 25 230 123	1)2)	(Pos.1-30)			
		1	SF 11 226 123	1)2)	(Pos.1-30)			
		1	SF 18 226 123	1)2)	(Pos.1-30)			
	A2127085119	1	SF 17 109 123	1)2)	(Pos.1-30)	9	0.51	
		1	SF 17 217 123	1)2)	(Pos.1-30)			
		1	SF 15 224 123	1)2)	(Pos.1-30)			
		1	SF 25 226 123	1)2)	(Pos.1-30)			
		1	SF 25 228 123	1)2)	(Pos.1-30)			
		1	SF 11 217 123	1)2)	(Pos.1-30)			
		1	SF 11 224 123	1)2)	(Pos.1-30)			
		1	SF 18 224 123	1)2)	(Pos.1-30)			
		1	SF 18 217 123	1)2)	(Pos.1-30)			
		1	SA-C 57 38 123	1)2)	(Pos.1-30)			
		1	SA-C 57 42 123	1)2)	(Pos.1-30)			
		1	SA-C 57 40 123	1)2)	(Pos.1-30)			
		1	SA-C 67 42 123	1)2)	(Pos.1-30)			
		1	SA-C 67 44 123	1)2)	(Pos.1-30)			
		1	SA-C 67 46 123	1)2)	(Pos.1-30)			
	A2127084119	1	SF 17 107 123	1)2)	(Pos.1-30)	11	0.59	
		1	SF 17 215 123	1)2)	(Pos.1-30)			
		1	SF 15 222 123	1)2)	(Pos.1-30)			
		1	SF 11 215 123	1)2)	(Pos.1-30)			
		1	SF 11 222 123	1)2)	(Pos.1-30)			
		1	SF 18 222 123	1)2)	(Pos.1-30)			



Spare parts list

SU-A / SF / SA-C



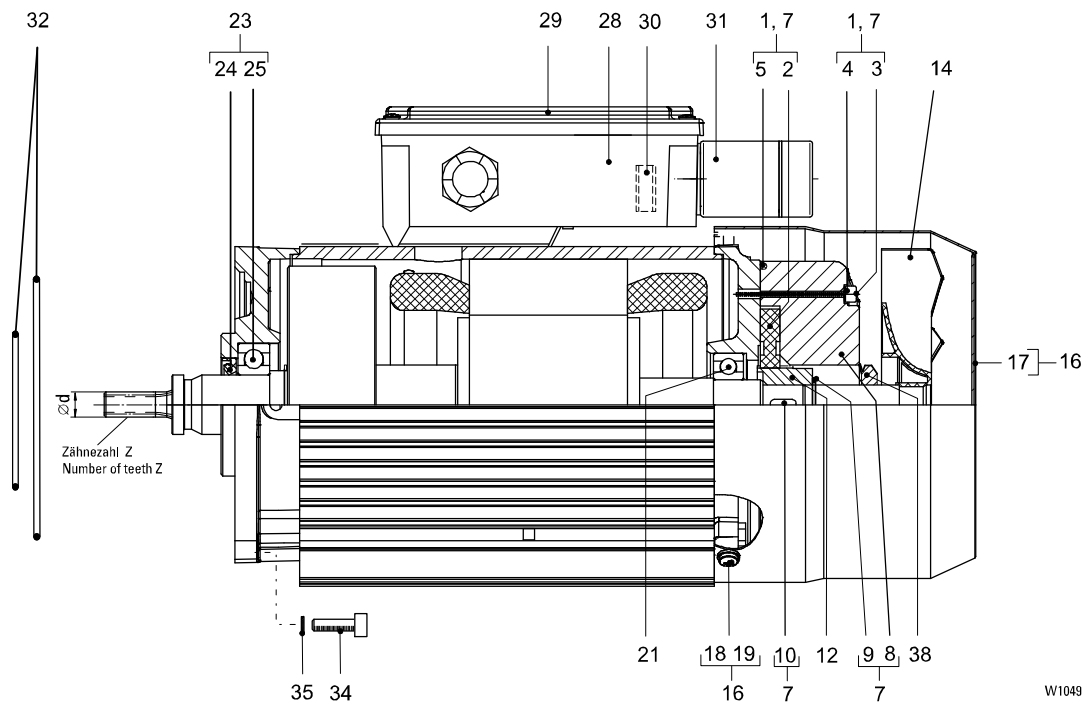
Replacement and repairs may only be carried out by trained personnel.

Motor 8/2F12

Item	Part number	Qty.	Description				Designation	
	A2127083119	1	SF 17 213 123	1)2)	(Pos.1-30)	Z 9	d [in] 0.76	Motor complete
		1	SF 15 220 123	1)2)	(Pos.1-30)			
		1	SF 25 222 123	1)2)	(Pos.1-30)			
		1	SF 25 224 123	1)2)	(Pos.1-30)			
		1	SF 11 213 123	1)2)	(Pos.1-30)			
		1	SF 11 220 123	1)2)	(Pos.1-30)			
		1	SF 18 220 123	1)2)	(Pos.1-30)			
	A2127082119	1	SF 17 211 123	1)2)	(Pos.1-30)	11	0.88	
		1	SF 15 218 123	1)2)	(Pos.1-30)			
		1	SA-C 57 36 123	1)2)	(Pos.1-30)			
		1	SA-C 67 40 123	1)2)	(Pos.1-30)			
	A2127074119	1	SF 17 209 123	1)2)	(Pos.1-30)	9	1.1	
	A2127073119	1	SF 17 207 123	1)2)	(Pos.1-30)	11	1.27	
1	A2127023650	1			(Pos.2-5)			Brake rotor spare part set
2	1			Tam.8			Brake rotor
3	3	M4x45		ISO 4762			Socket head cap screw
4	3	C4x8		DIN 7603			Sealing ring
5	1	90x2.5		NB 70			Round sealing ring
7	A2127024650	1	104...120 V	3)	(Pos.1,8-10)	190...460 V/50 Hz	4)	Brake spare part set
	A2127025650	1	130...150 V	3)	(Pos.1,8-10)	480...525 V/50 Hz	4)	
	A2127026650	1	156...180 V	3)	(Pos.1,8-10)	575...720 V/50 Hz	4)	
8	1						Brake
9	1	15x1		DIN 471			Circlip
10	1	A5x5x16		DIN 6885			Key
12	A5673490	1						Nut
14	A5760510	1						Fan wheel
16	A2127020650	1			(Pos.17-19)			Fan cowling spare part set
17	1						Fan cowling
18	4	M4x8		ISO 1207			Socket head cap screw
19	4	A4.3		DIN 6797			External teeth lock washer
21	A2127028650	1	6202-2RS		(Pos. 3-5, 8,9)			Bearing Spare part set
23	A2127027650	1			(Pos. 24,25)			Bearing Spare part set
24	1	6204-2RS		DIN 625			Grooved ball bearing
25	1	AS 20x35x7		DIN 3760		5)	Shaft seal
28	A5700770	1						Terminal box
29	A5673480	1						Terminal box lid
30	A5671080	1	PME400				6)	Rectifier
	A5671900	1	PMB400				7)	
31	A0443039820	1						Plug connector
32	A5150200	1	130x2		SF 1.			Round sealing ring
	A5159530	1	70x2		SF 25, SF 35, SA-C ..			
34	A5002310	4	M6x20		SF ..., SA-C ..	ISO 4762-8.8		Socket head cap screw
	A5002320	4	M6x25		SF 25	ISO 4762-8.8		
35	A5068380	4	S6					Locking disc
38	A5180510	1	V-Seal					Sealing ring

- 1) Please state operating voltage, frequency, type of geared motor and type of motor
- 2) Always include item 32 in order
- 3) Coil voltage
- 4) Operating voltage motor
- 5) Only replaceable at Z 6 - 11, d < 0.79 in
- 6) Not for supply voltage 190...210 V/60 Hz
- 7) Only for supply voltage 190...210 V/60 Hz

Replacement and repairs may only be carried out by trained personnel.

Motor 8/2F13


W1049

Item	Part number	Qty.	Description		Z	d [in]	Designation	
	A2127081119	1	SF 17 111 133	1)2)	(Pos.1-30)	7	0.42	Motor compl.
			SF 15 226 133	1)2)	(Pos.1-30)			
	A2127080119	1	SF 11 217 133	1)2)	(Pos.1-30)	9	0.51	
		1	SF 15 224 133	1)2)	(Pos.1-30)			
		1	SF 17 109 133	1)2)	(Pos.1-30)			
		1	SF 17 217 133	1)2)	(Pos.1-30)			
		1	SF 18 217 133	1)2)	(Pos.1-30)			
		1	SF 25 226 133	1)2)	(Pos.1-30)			
		1	SF 25 228 133	1)2)	(Pos.1-30)			
		1	SA-C 57 38 133	1)2)	(Pos.1-30)			
		1	SA-C 57 40 133	1)2)	(Pos.1-30)			
		1	SA-C 67 42 133	1)2)	(Pos.1-30)			
		1	SA-C 67 44 133	1)2)	(Pos.1-30)			
		1	SA-C 67 46 133	1)2)	(Pos.1-30)			
	A2127079119	1	SF 11 215 133	1)2)	(Pos.1-30)	11	0.59	
		1	SF 17 107 133	1)2)	(Pos.1-30)			
		1	SF 17 215 133	1)2)	(Pos.1-30)			
		1	SF 15 222 133	1)2)	(Pos.1-30)			
		1	SF 18 215 133	1)2)	(Pos.1-30)			
		1	SF 18 222 133	1)2)	(Pos.1-30)			
		1	SF 18 222 133	1)2)	(Pos.1-30)			
	A2127078119	1	SF 11 213 133	1)2)	(Pos.1-30)	9	0.76	
		1	SF 11 220 133	1)2)	(Pos.1-30)			
		1	SF 17 213 133	1)2)	(Pos.1-30)			
		1	SF 15 220 133	1)2)	(Pos.1-30)			
		1	SF 18 220 133	1)2)	(Pos.1-30)			
		1	SF 25 222 133	1)2)	(Pos.1-30)			
		1	SF 25 224 133	1)2)	(Pos.1-30)			
		1	SF 25 224 133	1)2)	(Pos.1-30)			
	A2127077119	1	SF 11 211 133	1)2)	(Pos.1-30)	11	0.88	
		1	SF 17 211 133	1)2)	(Pos.1-30)			
		1	SF 15 218 133	1)2)	(Pos.1-30)			
		1	SA-C 57 32 133	1)2)	(Pos.1-30)			
		1	SA-C 57 34 133	1)2)	(Pos.1-30)			
		1	SA-C 57 36 133	1)2)	(Pos.1-30)			
		1	SA-C 67 36 133	1)2)	(Pos.1-30)			
		1	SA-C 67 38 133	1)2)	(Pos.1-30)			
		1	SA-C 67 40 133	1)2)	(Pos.1-30)			
		1	SA-C 67 40 133	1)2)	(Pos.1-30)			



Spare parts list

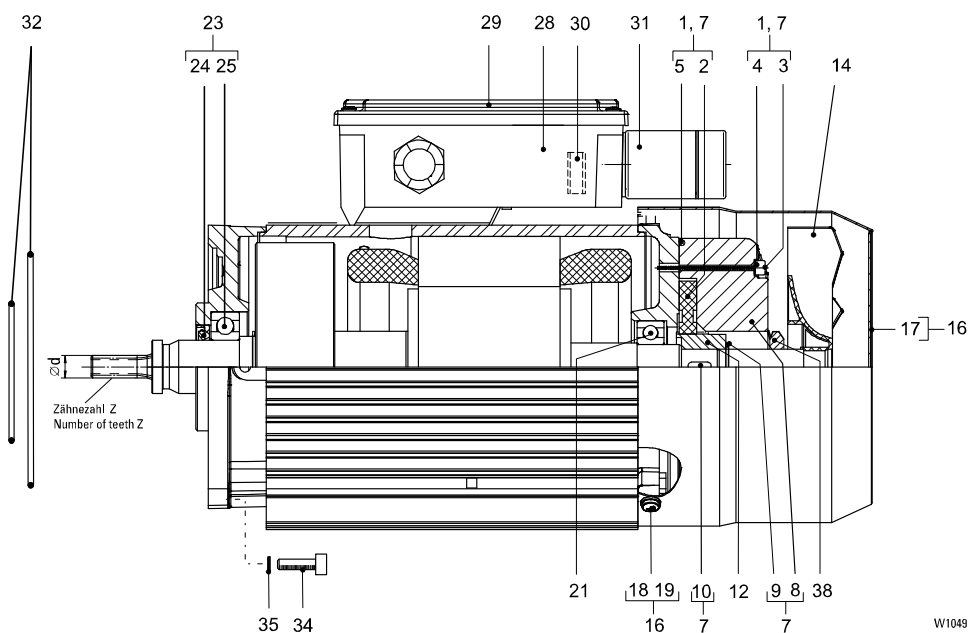
SU-A / SF / SA-C



Item	Part number	Qty.	Description				Designation	
	A2127076119	1	SF 17 209 133	1)2)	(Pos.1-30)	Z	d [in]	Motor complete
		1	SF 15 216 133	1)2)	(Pos.1-30)	9	1.1	
		1	SF 25 218 133	1)2)	(Pos.1-30)			
		1	SF 25 220 133	1)2)	(Pos.1-30)			
	A2127075119	1	SF 17 207 133	1)2)	(Pos.1-30)	11	1.27	
		1	SF 15 214 133	1)2)	(Pos.1-30)			
	A2127071119	1	SF 35 832 133	1)2)	(Pos.1-30)	13	1.45	
		1	SF 35 834 133	1)2)	(Pos.1-30)			
		1	SF 35 836 133	1)2)	(Pos.1-30)			
		1	SF 25 830 133	1)2)	(Pos.1-30)			
		1	SF 25 832 133	1)2)	(Pos.1-30)			
		1	SF 25 834 133	1)2)	(Pos.1-30)			
1	A2127023650	1			(Pos.2-5)			
2	1			Tam.8			Brake rotor
3	3	M4×45		ISO 4762			Socket head cap screw
4	3	C4×8		DIN 7603			Sealing ring
5	1	90×2.5		NB 70			Round sealing ring
7	A2127029650	1	104...120 V	3)	(Pos.1,8-10)	190...460 V/50 Hz	4)	Brake spare part set
	A2127030650	1	130...150 V	3)	(Pos.1,8-10)	480...525 V/50 Hz	4)	
	A2127031650	1	156...180 V	3)	(Pos.1,8-10)	575...720 V/50 Hz	4)	
8	1						Brake
9	1	15×1		DIN 471			Circlip
10	1	A5×5×16		DIN 6885			Key
12	A5673490	1						Nut
14	A5760510	1						Fan wheel
16	A2127020650	1			(Pos.17-19)			Fan cowling spare part set
17	1						Fan cowling
18	4	M4×8		ISO 1207			Socket head cap screw
19	4	A4.3		DIN 6797			External teeth lock washer
21	A2127028650	1	6202-2RS		(Pos. 3-5,8,9)			Bearing Spare part set
23	A2127027650	1			(Pos. 24, 25)			Bearing Spare part set
24	1	6204-2RS		DIN 625			Grooved ball bearing
25	1	AS 20×35×7		DIN 3760		5)	Shaft seal
28	A5700770	1						Terminal box
29	A5673480	1						Terminal box lid
30	A5671080	1	PME400				6)	Rectifier
	A5671900	1	PMB400				7)	
31	A0443039820	1						Plug connector
32	A5150200	1	130×2		SF 1.			Round sealing ring
	A5159530	1	70×2		SF 25, SF 35, SA-C ..			
34	A5002310	4	M6×20		SF .., SA-C ..	ISO 4762-8.8		Socket head cap screw
	A5002320	4	M6×25		SF 25	ISO 4762-8.8		
35	A5068380	4	S6					Locking disc
38	A5180510	1	V-Seal					Sealing ring

- 1) Please state operating voltage, frequency, type of geared motor and type of motor
- 2) Always include item 32 in order
- 3) Coil voltage
- 4) Operating voltage motor
- 5) Only replaceable at Z 7 - 11, d < 0.79 in
- 6) Not for supply voltage 190...210 V/60 Hz
- 7) Only for supply voltage 190...210 V/60 Hz

Replacement and repairs may only be carried out by trained personnel.

Motor 8/2F31


W1049

Item	Part number	Qty.	Description		Z	d [in]	Designation
A2327077119	SF 11 217 313	1	1)2)	(Pos.1-30)	9	0.51	Motor compl.
	SF 18 217 313	1	1)2)	(Pos.1-30)			
	SF 25 226 313	1	1)2)	(Pos.1-30)			
	SF 25 228 313	1	1)2)	(Pos.1-30)			
	SA-C 57 38 313	1	1)2)	(Pos.1-30)			
	SA-C 67 42 313	1	1)2)	(Pos.1-30)			
	SA-C 67 44 313	1	1)2)	(Pos.1-30)			
A2327076119	SF 11 213 313	1	1)2)	(Pos.1-30)	9	0.76	
	SF 17 213 313	1	1)2)	(Pos.1-30)			
	SF 18 213 313	1	1)2)	(Pos.1-30)			
	SF 18 220 313	1	1)2)	(Pos.1-30)			
	SF 25 222 313	1	1)2)	(Pos.1-30)			
	SF 25 224 313	1	1)2)	(Pos.1-30)			
	SF 35 226 313	1	1)2)	(Pos.1-30)			
SF 35 228 313	1	1)2)	(Pos.1-30)				
A2327079119	SF 17 209 313	1	1)2)	(Pos.1-30)	9	1.1	
	SF 25 218 313	1	1)2)	(Pos.1-30)			
	SF 25 220 313	1	1)2)	(Pos.1-30)			
A2327075119	SF 25 216 313	1	1)2)	(Pos.1-30)	13	1.45	
	SF 35 834 313	1	1)2)	(Pos.1-30)			
	SF 35 832 313	1	1)2)	(Pos.1-30)			
A2327071119	SF 11 215 313	1	1)2)	(Pos.1-30)	11	0.59	
	SF 17 215 313	1	1)2)	(Pos.1-30)			
	SF 18 215 313	1	1)2)	(Pos.1-30)			
	SF 35 230 313	1	1)2)	(Pos.1-30)			
A2327080119	SF 11 211 313	1	1)2)	(Pos.1-30)	11	0.88	
	SF 15 218 313	1	1)2)	(Pos.1-30)			
	SF 17 211 313	1	1)2)	(Pos.1-30)			
	SF 18 211 313	1	1)2)	(Pos.1-30)			
	SA-C 57 36 313	1	1)2)	(Pos.1-30)			
	SA-C 57 34 313	1	1)2)	(Pos.1-30)			
	SA-C 57 32 313	1	1)2)	(Pos.1-30)			
	SA-C 57 30 313	1	1)2)	(Pos.1-30)			
	SA-C 57 28 313	1	1)2)	(Pos.1-30)			
	SA-C 57 26 313	1	1)2)	(Pos.1-30)			
	SA-C 67 40 313	1	1)2)	(Pos.1-30)			
	SA-C 67 38 313	1	1)2)	(Pos.1-30)			
	SA-C 67 36 313	1	1)2)	(Pos.1-30)			



Spare parts list

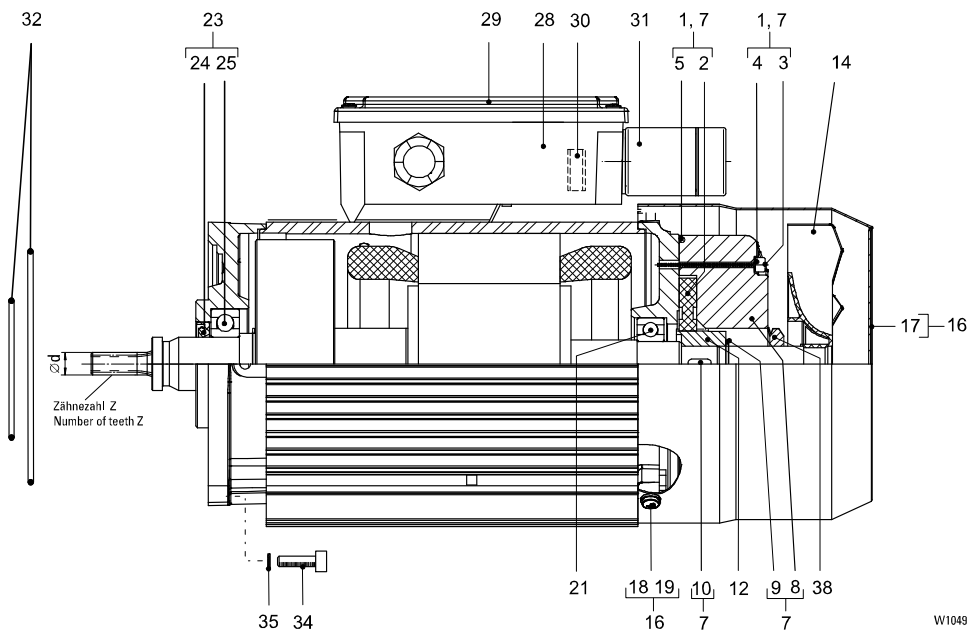
SU-A / SF / SA-C



Item	Part number	Qty.	Description				Designation	
		1	SA-C 67 34 313	1)2)	(Pos.1-30)			
		1	SA-C 67 32 313	1)2)	(Pos.1-30)			
		1	SA-C 67 30 313	1)2)	(Pos.1-30)			
1	A2127036650	1			(Pos.2-5)	Brake rotor spare part set		
2	1			Tam.13	Brake rotor		
3	3	M6×55		ISO 4762	Socket head cap screw		
4	3	C6×10		DIN 7603	Sealing ring		
5	1	135×2.5		NB 70	Round sealing ring		
7	A2127033650	1	104...120 V	3)	(Pos.1,8-10)	190...460 V/50 Hz	4)	Brake spare part set
	A2127034650	1	130...150 V	3)	(Pos.1,8-10)	480...525 V/50 Hz	4)	
	A2127035650	1	156...180 V	3)	(Pos.1,8-10)	575...720 V/50 Hz	4)	
8	1						Brake
9	1	20×1.2		DIN 471			Circlip
10	1	A6×6×16		DIN 6885			Key
12	A5673620	1						Nut
14	A5760520	1						Fan wheel
16	A2127021650	1			(Pos.17-19)			Fan cowling spare part set
17	1						Fan cowling
18	4	M4×8		ISO 1207			Socket head cap screw
19	4	A4.3		DIN 6797			External teeth lock washer
21	A2127039650	1	6205-2ZJC3		(Pos. 3-5, 8,9)			Bearing Spare part set
23	A2127038650	1			(Pos. 24, 25)			Bearing Spare part set
24	1	6206-2ZJC3		DIN 625			Grooved ball bearing
25	1	A30×47×7		DIN 3760		5)	Shaft seal
28	A5700770	1						Terminal box
29	A5673480	1						Terminal box lid
30	A5671080	1	PME400				6)	Rectifier
	A5671900	1	PMB400				7)	
31	A0443039820	1						Plug connector
32	A5150200	1	130×2		SF 1.			Round sealing ring
	A5159530	1	70×2		SF 25, SF 35, SA-C ..			
34	A5001480	4	M10×25		SF .., SA-C ..	ISO 4762-8.8		Socket head cap screw
	A5002360	4	M10×30		SF 25	ISO 4762-8.8		
35	A5068400	4	S10					Locking disc
38	A5180520	1	V-Seal		TWVS00140			Sealing ring

- 1) Please state operating voltage, frequency, type of geared motor and type of motor
- 2) Always include item 32 in order
- 3) Coil voltage
- 4) Operating voltage motor
- 5) Only replaceable at Z 9 - 11, d < 1.18 in
- 6) Not for supply voltage 190...210 V/60 Hz
- 7) Only for supply voltage 190...210 V/60 Hz

Replacement and repairs may only be carried out by trained personnel.

Motor 8/2F42


W1049

Item	Part number	Qty.	Description	Z	d [in]	Designation
	A2427081119	1	SF 25 216 423 1)2) (Pos.1-30)	13	1.45	Motor compl.
	A2427082119	1	SF 25 218 423 1)2) (Pos.1-30)	9	1.1	
		1	SF 25 220 423 1)2) (Pos.1-30)			
		1	SF 35 224 423 1)2) (Pos.1-30)			
		1	SF 35 222 423 1)2) (Pos.1-30)			
	A2427080119	1	SF 35 230 423 1)2) (Pos.1-30)	11	0.59	
	A2427079119	1	SF 25 224 423 1)2) (Pos.1-30)	9	0.76	
		1	SF 25 222 423 1)2) (Pos.1-30)			
		1	SF 35 228 423 1)2) (Pos.1-30)			
		1	SF 35 226 423 1)2) (Pos.1-30)			
	A2427065119	1	SA-C 57 32 423 1)2) (Pos.1-30)	11	0.88	
		1	SA-C 57 30 423 1)2) (Pos.1-30)			
		1	SA-C 57 28 423 1)2) (Pos.1-30)			
		1	SA-C 57 26 423 1)2) (Pos.1-30)			
		1	SA-C 67 38 423 1)2) (Pos.1-30)			
		1	SA-C 67 36 423 1)2) (Pos.1-30)			
		1	SA-C 67 34 423 1)2) (Pos.1-30)			
		1	SA-C 67 32 423 1)2) (Pos.1-30)			
		1	SA-C 67 30 423 12) (Pos.1-30)			



Spare parts list

SU-A / SF / SA-C

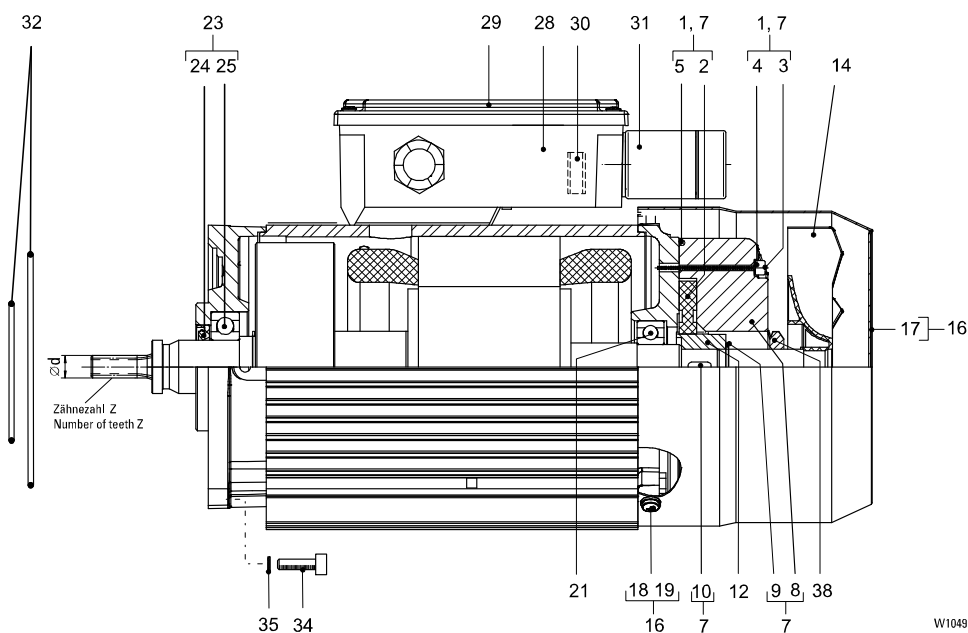


Item	Part number	Qty.	Description				Designation	
1	A2127036650	1		(Pos.2-5)			Brake rotor spare part set	
2	1		Tam.13			Brake rotor	
3	3	M6×55		ISO 4762		Socket head cap screw	
4	3	C6×10		DIN 7603		Sealing ring	
5	1	135×2.5	NB 70			Round sealing ring	
7	A2127013650	1	104...120 V	3)	(Pos.1,8-10)	190...460 V/50 Hz	4)	Brake spare part set
	A2127014650	1	130...150 V	3)	(Pos.1,8-10)	480...525 V/50 Hz	4)	
	A2127015650	1	156...180 V	3)	(Pos.1,8-10)	575...720 V/50 Hz	4)	
8	1						Brake
9	1	20×1.2		DIN 471			Circlip
10	1	A6×6×16		DIN 6885			Key
12	A5673620	1						Hub
14	A5760520	1						Fan wheel
16	A2127021650	1		(Pos.17-19)				Fan cowling spare part set
17	1						Fan cowling
18	4	M4×8		ISO 1207			Socket head cap screw
19	4	A4.3		DIN 6797			External teeth lock washer
21	A2127039650	1	6205-2ZJC3	(Pos. 3-5, 8,9)				Bearing Spare part set
23	A2127038650	1		(Pos. 24, 25)				Bearing Spare part set
24	1	6206-2ZJC3		DIN 625			Grooved ball bearing
25	1	A30×47×7		DIN 3760		5)	Shaft seal
28	A5700770	1						Terminal box
29	A5673480	1						Terminal box lid
30	A5671080	1	PME400				6)	Rectifier
	A5671900	1	PMB400				7)	
31	A0443039820	1						Plug connector
32	A5159530	1	70×2	SF 25, SF 35, SA-C ..				Round sealing ring
34	A5001480	4	M10×25	SF 35, SA-C ..	ISO 4762-8.8			Socket head cap screw
	A5002360	4	M10×30	SF 25	ISO 4762-8.8			
35	A5068400	4	S10					Locking disc
38	A5180520	1	V-Seal	TWVS00140				Sealing ring

- 1) Please state operating voltage, frequency, type of geared motor and type of motor
- 2) Always include item 32 in order
- 3) Coil voltage
- 4) Operating voltage motor
- 5) Only replaceable at Z 9 - 11, d < 1.18 in
- 6) Not for supply voltage 190...210 V/60 Hz
- 7) Only for supply voltage 190...210 V/60 Hz

Replacement and repairs may only be carried out by trained personnel.

Motor 8/2F52



Item	Part number	Qty.	Description	Z	d [in]	Designation
	A2527085119	1	SA-C 57 26 523 1)2) (Pos.1-30)	9	1.1	Motor compl.
		1	SA-C 57 28 523 1)2) (Pos.1-30)			
		1	SA-C 57 30 523 1)2) (Pos.1-30)			
		1	SA-C 67 30 523 1)2) (Pos.1-30)			
		1	SA-C 67 32 523 1)2) (Pos.1-30)			
		1	SA-C 67 34 523 1)2) (Pos.1-30)			
		1	SA-C 67 36 523 1)2) (Pos.1-30)			



Spare parts list

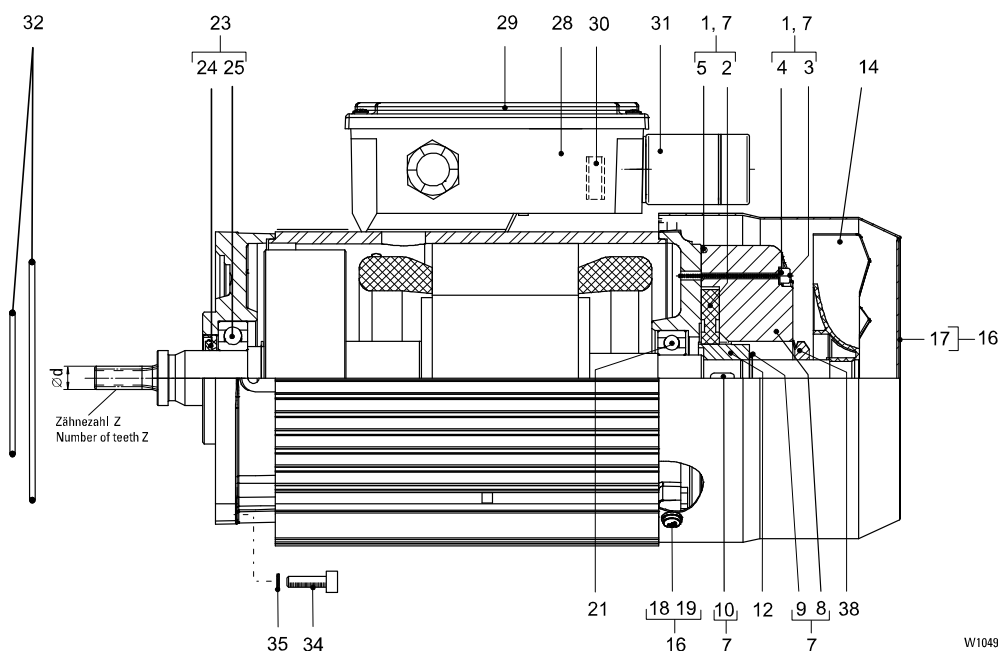
SU-A / SF / SA-C



Item	Part number	Qty.	Description	Designation
1	A2127042650	1	(Pos.2-5)	Brake rotor spare part set
2	1	Tam.15	Brake rotor
3	3	M6×60	ISO 4762-8.8
4	3	C6×10	DIN 7603
5	1	154.5×3 NB 70	Sealing ring
				Round sealing ring
7	A2127043650	1	104...120 V 3) (Pos.1,8-10)	190...460 V/50 Hz 4)
	A2127044650	1	130...150 V 3) (Pos.1,8-10)	480...525 V/50 Hz 4)
	A2127045650	1	156...180 V 3) (Pos.1,8-10)	575...720 V/50 Hz 4)
8	1		Brake
9	1	20×1.2	DIN 471
10	1	A6×6×20	DIN 6885
12	A5673630	1		Key
14	A5760530	1		Nut
16	A2127022650	1	(Pos.17-19)	Fan wheel
17	1		Fan cowling spare part set
18	4	M4×8	ISO 1207
19	4	A4.3	DIN 6797
21	A2127039650	1	6205-2ZJC3 (Pos. 3-5, 8,9)	External teeth lock washer
23	A2127038650	1	(Pos. 24, 25)	Bearing Spare part set
24	1	6206-2ZJC3	DIN 625
25	1	A30×47×7	DIN 3760
28	A5700770	1		Grooved ball bearing
29	A5673480	1		Shaft seal
30	A5671080	1	PME400	Terminal box
	A5671900	1	PMB400	Terminal box lid
31	A0443039820	1		Rectifier
32	A5159530	1	70×2	Plug connector
34	A5001480	4	M10×25	ISO 4762-8.8
35	A5068400	4	S10	Round sealing ring
				Socket head cap screw
38	A5180520	1	V-Seal TWVS00140	Locking disc
				Sealing ring

- 1) Please state operating voltage, frequency, type of geared motor and type of motor
- 2) Always include item 32 in order
- 3) Coil voltage
- 4) Operating voltage motor
- 5) Only replaceable at Z 9, d < 1.18 in
- 6) Not for supply voltage 190...210 V/60 Hz
- 7) Only for supply voltage 190...210 V/60 Hz

Replacement and repairs may only be carried out by trained personnel.

Motor 4F18


W1049

Item	Part number	Qty.	Description		Z	d [in]	Designation
	A2127062119	1	SF 17 207 184	1)2)	11	1.27	Motor compl.
		1	SF 15 214 184	1)2)			
	A2127063119	1	SF 17 209 184	1)2)	9	1.1	
		1	SF 15 216 184	1)2)			
		1	SF 25 220 184	1)2)			
		1	SF 25 218 184	1)2)			
	A2127064119	1	SF 11 211 184	1)2)	11	0.88	
		1	SF 17 211 184	1)2)			
		1	SF 15 218 184	1)2)			
		1	SA-C 57 32 184	1)2)			
		1	SA-C 57 34 184	1)2)			
	A2127065119	1	SF 17 213 184	1)2)	9	0.76	
		1	SF 15 220 184	1)2)			
		1	SF 25 224 184	1)2)			
		1	SF 25 222 184	1)2)			
	A2127066119	1	SF 11 215 184	1)2)	11	0.59	
		1	SF 17 215 184	1)2)			
		1	SF 17 107 184	1)2)			
		1	SF 15 222 184	1)2)			
		1	SF 15 222 184	1)2)			
	A2127067119	1	SF 11 224 184	1)2)	9	0.51	
		1	SF 17 217 184	1)2)			
		1	SF 17 109 184	1)2)			
		1	SF 15 224 184	1)2)			
		1	SF 25 228 184	1)2)			
		1	SF 25 226 184	1)2)			
		1	SA-C 57 40 184	1)2)			
		1	SA-C 57 42 184	1)2)			
		1	SA-C 67 40 184	1)2)			
		1	SA-C 67 42 184	1)2)			
		1	SA-C 67 42 184	1)2)			
	A2127068119	1	SF 17 219 184	1)2)	7	0.42	
		1	SF 17 111 184	1)2)			
		1	SF 15 226 184	1)2)			
		1	SF 25 230 184	1)2)			
	A2127069119	1	SF 17 113 184	1)2)	6	0.38	



Spare parts list

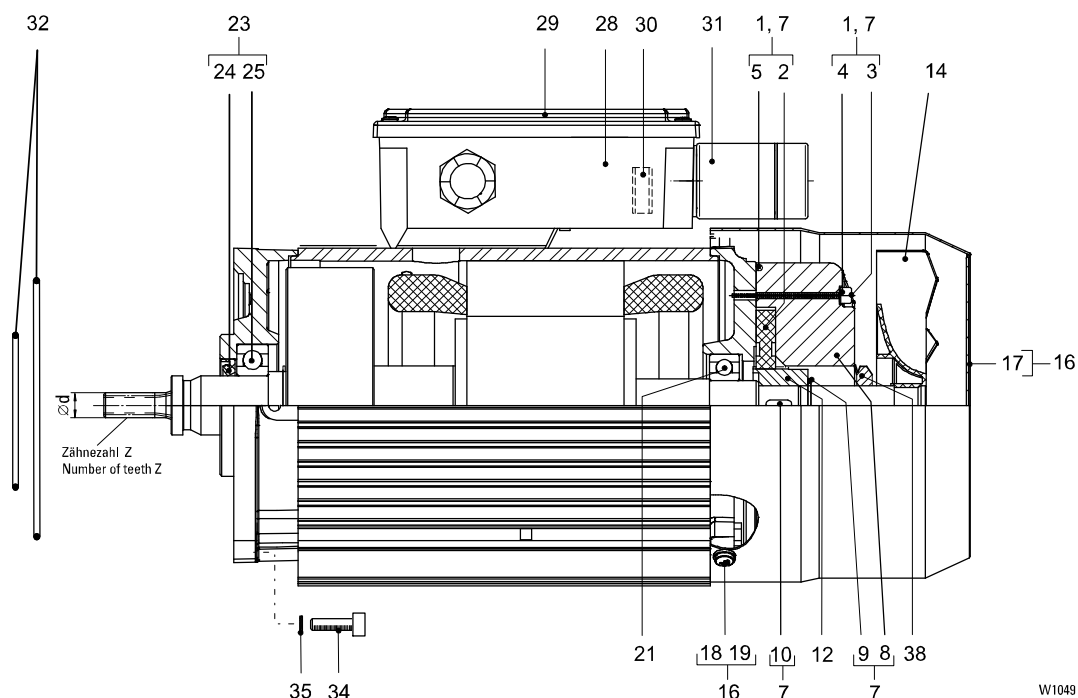
SU-A / SF / SA-C



Item	Part number	Qty.	Description				Z	d [in]	Designation
	A2127061119	1	SF 25 834 184	1)2)	(Pos.1-30)	13	1.45	Motor compl.	
		1	SF 25 832 184	1)2)	(Pos.1-30)				
		1	SF 35 836 184	1)2)	(Pos.1-30)				
		1	SF 35 834 184	1)2)	(Pos.1-30)				
		1	SF 35 832 184	1)2)	(Pos.1-30)				
	A2127084129	1	SF 11 211 184	1)2)	(Pos.1-23)	11	0.88		
			SF 17 211 184	1)2)	(Pos.1-23)				
			SA-C 57 34 184	1)2)	(Pos.1-23)				
			SA-C 57 32 184	1)2)	(Pos.1-23)				
			SA-C 67 40 184	1)2)	(Pos.1-23)				
1	A2127023650	1			(Pos.2-5)			Brake rotor spare part set	
2	1			Tam.8			Brake rotor	
3	3	M4×45		ISO 4762			Socket head cap screw	
4	3	C4×8		DIN 7603			Sealing ring	
5	1	90×2.5	NB 70				Round sealing ring	
7	A2127051650	1	104...120 V	3)	(Pos.1, 8-10)	190...240 V/50 Hz	4)	Brake spare part set	
	A2127052650	1	180...207 V	3)	(Pos.1, 8-10)	360...460 V/50 Hz	4)		
8	1						Brake	
9	1	15×1		DIN 471			Circlip	
10	1	A5×5×16		DIN 6885			Key	
12	A5673490	1						Nut	
14	A5760510	1						Fan wheel	
16	A2127020650	1			(Pos.17-19)			Fan cowling spare part set	
17	1						Fan cowling	
18	4	M4×8		ISO 1207			Socket head cap screw	
19	4	A4.3		DIN 6797			External teeth lock washer	
21	A2127028650	1	6202-2RS		(Pos. 3-5, 8,9)			Bearing Spare part set	
23	A2127027650	1			(Pos. 24,25)			Bearing Spare part set	
24	1	6204-2RS		DIN 625			Grooved ball bearing	
25	1	AS 20×35×7		DIN 3760		5)	Shaft seal	
28	A5700770	1						Terminal box	
29	A5673480	1						Terminal box lid	
30	A5671080	1	PME400				6)	Rectifier	
	A5673670	1	PME500				7)		
32	A5150200	1	130×2	SF 1.				Round sealing ring	
	A5159530	1	70×2	SF 25, SF 35, SA-C ..					
34	A5002310	4	M6×20	SF .., SA-C ..	ISO 4762-8.8			Socket head cap screw	
	A5002320	4	M6×25	SF 25	ISO 4762-8.8				
35	A5068380	4	S6					Locking disc	
38	A5180510	1	V-Seal					Sealing ring	

- 1) Please state operating voltage, frequency, type of geared motor and type of motor
- 2) Always include item 32 in order
- 3) Coil voltage
- 4) Operating voltage motor
- 5) Only replaceable at Z 6 - 11, d < 0.79 in
- 6) Not for supply voltage 380...460 V/50 Hz, 440...480 V/60 Hz
- 7) Only for supply voltage 380...460 V/50 Hz, 440...480 V/60 Hz

Replacement and repairs may only be carried out by trained personnel.

Motor 4F38


W1049

Item	Part number	Qty.	Description	Z	d [in]	Designation
A2327057119	SF 17 207 384	1)2)	(Pos.1-30)	11	1.27	Motor compl.
	SF 15 214 384	1)2)	(Pos.1-30)			
	SA-C 57 24 384	1)2)	(Pos.1-30)			
A2327058119	SF 17 209 384	1)2)	(Pos.1-30)	9	1.1	
	SF 15 216 384	1)2)	(Pos.1-30)			
	SF 25 220 384	1)2)	(Pos.1-30)			
	SF 25 218 384	1)2)	(Pos.1-30)			
	SF 35 224 384	1)2)	(Pos.1-30)			
	SF 35 224 384	1)2)	(Pos.1-30)			
A2327059119	SF 17 211 384	1)2)	(Pos.1-30)	11	0.88	
	SF 15 218 384	1)2)	(Pos.1-30)			
	SF 11 211 384	1)2)	(Pos.1-30)			
	SA-C 57 26 384	1)2)	(Pos.1-30)			
	SA-C 57 28 384	1)2)	(Pos.1-30)			
	SA-C 57 30 384	1)2)	(Pos.1-30)			
	SA-C 57 32 384	1)2)	(Pos.1-30)			
	SA-C 57 34 384	1)2)	(Pos.1-30)			
	SA-C 67 32 384	1)2)	(Pos.1-30)			
	SA-C 67 34 384	1)2)	(Pos.1-30)			
	SA-C 67 36 384	1)2)	(Pos.1-30)			
A2327060119	SF 15 220 384	1)2)	(Pos.1-30)	9	0.76	
	SF 17 213 384	1)2)	(Pos.1-30)			
	SF 25 224 384	1)2)	(Pos.1-30)			
	SF 25 222 384	1)2)	(Pos.1-30)			
	SF 35 228 384	1)2)	(Pos.1-30)			
	SF 35 226 384	1)2)	(Pos.1-30)			
A2327061119	SF 35 230 384	1)2)	(Pos.1-30)	11	0.59	
A2327062119	SF 25 228 384	1)2)	(Pos.1-30)	9	0.51	
	SF 25 226 384	1)2)	(Pos.1-30)			
	SA-C 57 40 384	1)2)	(Pos.1-30)			
	SA-C 67 42 384	1)2)	(Pos.1-30)			
A2327056119	SF 25 216 384	1)2)	(Pos.1-30)	13	1.45	
	SF 35 834 384	1)2)	(Pos.1-30)			
	SF 35 832 384	1)2)	(Pos.1-30)			

01-0.3.4.1-us-1.2-ys | A11888101 Rev AB



Spare parts list



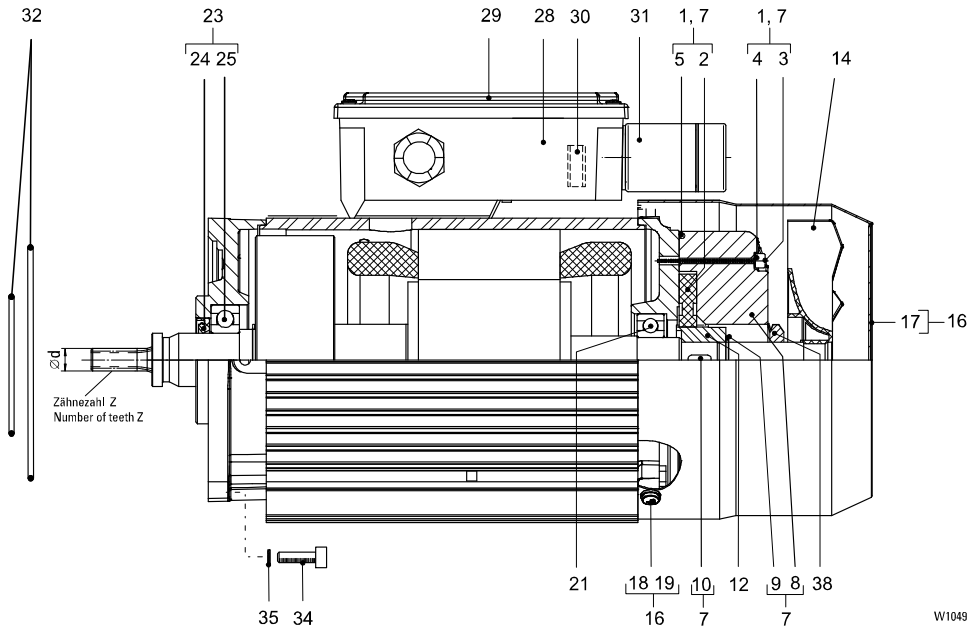
SU-A / SF / SA-C

Item	Part number	Qty.	Description	Designation
1	A2127036650	1	(Pos.2-5)	Brake rotor spare part set
2	1	Tam.13	Brake rotor
3	3	M6×55 ISO 4762	Socket head cap screw
4	3	C6×10 DIN 7603	Sealing ring
5	1	135×2.5 NB 70	Round sealing ring
7	A2127040650	1	104...120 V 3) (Pos.1,8-10) 190...240 V/50 Hz 4)	Brake spare part set
	A2127041650	1	180...207 V 3) (Pos.1,8-10) 380...460 V/50 Hz 4)	
8	1		Brake
9	1	20×1.2 DIN 471	Circlip
10	1	A6×6×16 DIN 6885	Key
12	A5673620	1		Nut
14	A5760520	1		Fan wheel
16	A2127021650	1	(Pos.17-19)	Fan cowling spare part set
17	1		Fan cowling
18	4	M4×8 ISO 1207	Socket head cap screw
19	4	A4.3 DIN 6797	External teeth lock washer
21	A2127039650	1	6205-2ZJC3 (Pos. 3-5, 8,9)	Bearing Spare part set
23	A2127038650	1	(Pos. 24, 25)	Bearing Spare part set
24	1	6206-2ZJC3 DIN 625	Grooved ball bearing
25	1	A30×47×7 DIN 3760	Shaft seal
28	A5700770	1		Terminal box
29	A5673480	1		Terminal box lid
30	A5671080	1	PME400	Rectifier
	A5673670	1	PME500	
32	A5150200	1	130×2 SF 1.	Round sealing ring
	A5159530	1	70×2 SF 25, SF 35, SA-C ..	
34	A5001480	4	M10×25 SF .., SA-C .. ISO 4762-8.8	Socket head cap screw
	A5002360	4	M10×30 SF 25 ISO 4762-8.8	
35	A5068400	4	S10	Locking disc
38	A5180520	1	V-Seal TWVS00140	Sealing ring

- 1) Please state operating voltage, frequency, type of geared motor and type of motor
- 2) Always include item 32 in order
- 3) Coil voltage
- 4) Operating voltage motor
- 5) Only replaceable at Z 9 - 11, d < 1.18 in
- 6) Not for supply voltage 380...460 V/50 Hz, 440...480 V/60 Hz
- 7) Only for supply voltage 380...460 V/50 Hz, 440...480 V/60 Hz

Replacement and repairs may only be carried out by trained personnel.

Motor 4F48



W1049

Item	Part number	Qty.	Description	Z	d [in]	Designation
	A2427071119	1	SF 35 230 484 1)2) (Pos.1-30)	11	0.59	Motor compl.
	A2427070119	1	SF 35 228 484 1)2) (Pos.1-30)	9	0.76	
		1	SF 35 226 484 1)2) (Pos.1-30)			
	A2427068119	1	SF 25 216 484 1)2) (Pos.1-30)	13	1.45	
	A2427069119	1	SF 25 218 484 1)2) (Pos.1-30)	9	1.1	
		1	SF 25 220 484 1)2) (Pos.1-30)			
		1	SF 35 224 484 1)2) (Pos.1-30)			
		1	SF 35 222 484 1)2) (Pos.1-30)			



Spare parts list

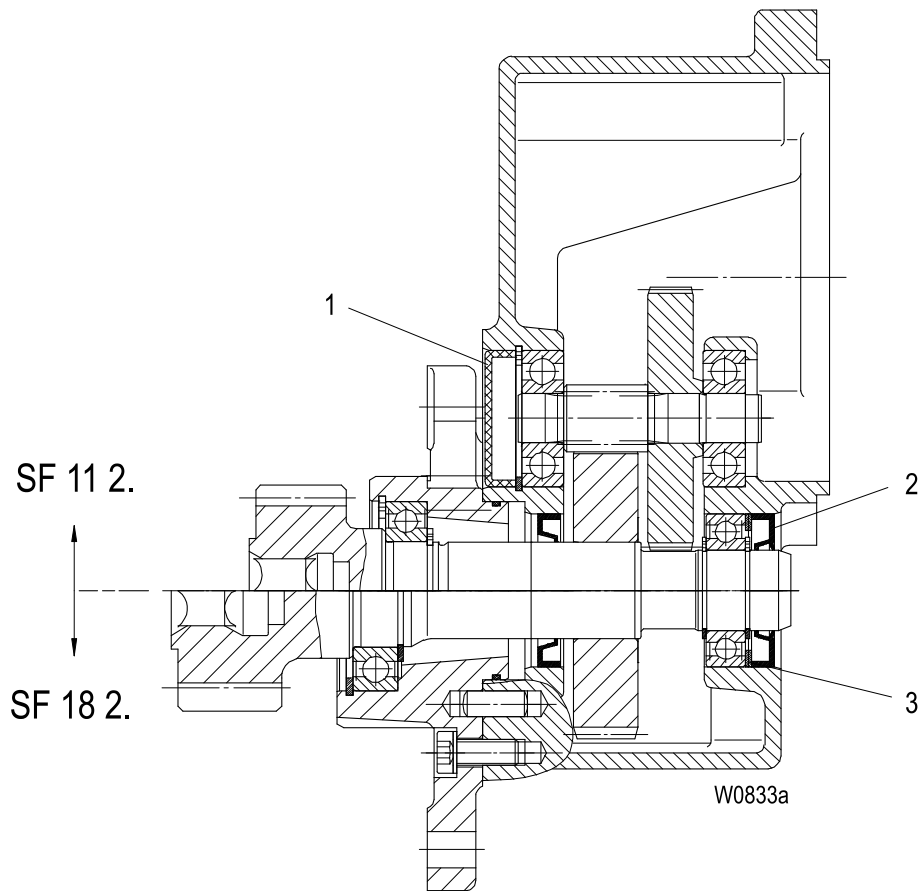


SU-A / SF / SA-C

Item	Part number	Qty.	Description	Designation
1	A2127036650	1	(Pos.2-5)	Brake rotor spare part set
2	1	Tam.13	Brake rotor
3	3	M6×55 ISO 4762	Socket head cap screw
4	3	C6×10 DIN 7603	Sealing ring
5	1	135×2.5 NB 70	Round sealing ring
7	A2127047650	1	104...120 V 3) (Pos.1, 8-10) 190...240 V/50 Hz 4)	Brake spare part set
	A2127048650	1	180...207 V 3) (Pos.1, 8-10) 380...460 V/50 Hz 4)	
8	1		Brake
9	1	20×1.2 DIN 471	Circlip
10	1	A6×6×16 DIN 6885	Key
12	A5673620	1		Nut
14	A5760520	1		Fan wheel
16	A2127021650	1	(Pos.17-19)	Fan cowling spare part set
17	1		Fan cowling
18	4	M4×8 ISO 1207	Socket head cap screw
19	4	A4.3 DIN 6797	External teeth lock washer
21	A2127039650	1	6205-2ZJC3 (Pos. 3-5, 8,9)	Bearing Spare part set
23	A2127038650	1	(Pos. 24, 25)	Bearing Spare part set
24	1	6206-2ZJC3 DIN 625	Grooved ball bearing
25	1	A30×47×7 DIN 3760	Shaft seal
28	A5700770	1		Terminal box
29	A5673480	1		Terminal box lid
30	A5671080	1	PME400	Rectifier
	A5673670	1	PME500	
32	A5159530	1	70×2	Round sealing ring
34	A5001480	4	M10×25 SF 35 ISO 4762-8.8	Socket head cap screw
	A5002360	4	M10×30 SF 25 ISO 4762-8.8	
35	A5068400	4	S10	Locking disc
38	A5180520	1	V-Seal TWVS00140	Sealing ring

- 1) Please state operating voltage, frequency, type of geared motor and type of motor
- 2) Always include item 32 in order
- 3) Coil voltage
- 4) Operating voltage motor
- 5) Only replaceable at Z 9 - 11, d < 1.18 in.
- 6) Not for supply voltage 380...460 V/50 Hz, 440...480 V/60 Hz
- 7) Only for supply voltage 380...460 V/50 Hz, 440...480 V/60 Hz

Replacement and repairs may only be carried out by trained personnel.

Gear SF 11 2.. / SF 18 2..


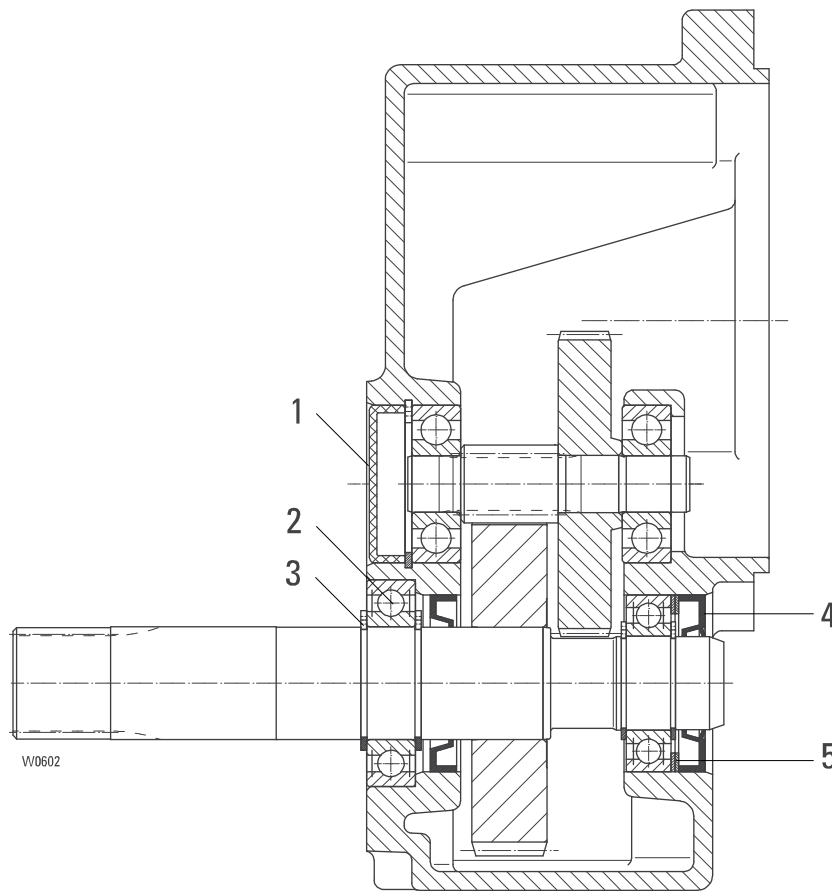
Item	Part number	Qty.	Description	Designation
	A2127024300	1	SF 11 226	Gear
	A2127025300	1	SF 11 224	
	A2127026300	1	SF 11 222	
	A2127027300	1	SF 11 220	
	A2127028300	1	SF 11 217	
	A2127029300	1	SF 11 215	
	A2127030300	1	SF 11 213	
	A2127031300	1	SF 11 211	
	A2127032300	1	SF 18 226	
	A2127033300	1	SF 18 224	
	A2127034300	1	SF 18 222	
	A2127035300	1	SF 18 220	
	A2127036300	1	SF 18 217	
	A2127037300	1	SF 18 215	
	A2127038300	1	SF 18 213	
	A2127039300	1	SF 18 211	
1	A5180360	1	42×9.5	End cap
2	A5611200	1	25×47×7	Shaft seal
3	A5078760	1	37×47×1	Adjusting washer

 1) Gear only available as complete unit except the signed parts
 Without gear oil: amount required see operating instruction



Replacement and repairs may only be carried out by trained personnel.

Gear SF 15 2..

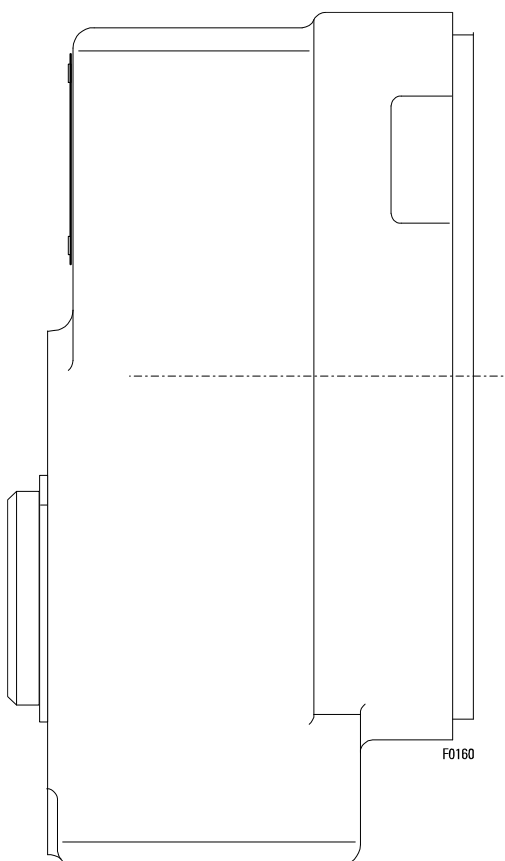


Item	Part number	Qty.	Description	Designation
	A2127011300	1	SF 15 226	Gear
	A2127012300	1	SF 15 224	
	A2127013300	1	SF 15 222	
	A2127014300	1	SF 15 220	
	A2127015300	1	SF 15 218	
	A2127016300	1	SF 15 216	
	A2127017300	1	SF 15 214	
1	A5180360	1		End cap
2	A5609520	1	6006-2RS DIN 625	Grooved ball bearing
3	A5060980	2	30×1.5 DIN 471	Locking ring
4	A5611200	1	25×47×7 DIN 6760 NB	Shaft seal
5	A5078760	2	37×47×1 DIN 988	Adjusting washer

1) Gear only available as complete unit except the signed parts
Without gear oil: amount required see operating instruction

Replacement and repairs may only be carried out by trained personnel.

Gear SF 17 1..



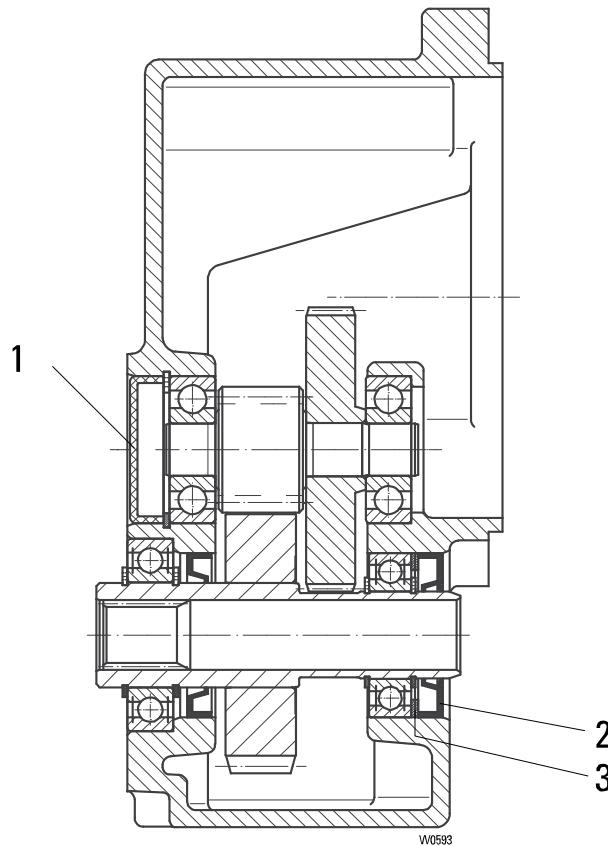
Item	Part number	Qty.	Description	Designation
	A2127000300	1	SF 17 113	Gear
	A2127001300	1	SF 17 111	
	A2127002300	1	SF 17 109	
	A2127003300	1	SF 17 107	

- 1) Gear only available as complete unit.
Without gear oil: amount required see operating instruction



Replacement and repairs may only be carried out by trained personnel.

Gear SF 17 2..



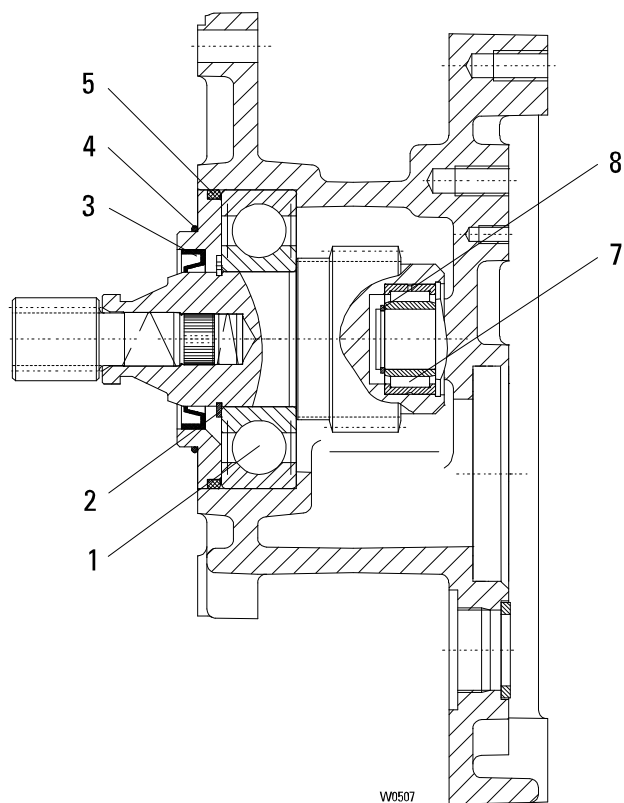
Item	Part number	Qty.	Description	Designation
	A2127004300	1	SF 17 219 1)	Gear
	A2127005300	1	SF 17 217 1)	
	A2127006300	1	SF 17 215 1)	
	A2127007300	1	SF 17 213 1)	
	A2127008300	1	SF 17 211 1)	
	A2127009300	1	SF 17 209 1)	
	A2127010300	1	SF 17 207 1)	
1	A5180360	1	42×9.5	
2	A5611200	1	25×47×7	Shaft seal
3	A5078760	2	37×47×1	Adjusting washer

1) Gear only available as complete unit except the signed parts
Without gear oil: amount required see operating instruction



Replacement and repairs may only be carried out by trained personnel.

Intermediate gear SF 25 8..



Item	Part number	Qty.	Description	Designation
	A2427039300	1	SF 25 832	Intermediate gear
		1	SF 25 834	
	A2427037300	1	SF 25 830	
1	A5608290	1	6309-27	Grooved ball bearing
2	A5061010	1	45×1.75	Locking ring
3	A5610260	1	45×60×8 NB	Shaft seal
4	A5159530	1	70×2 NB 70	Round sealing ring
5	A5159700	1	90×4 NB 70	Round sealing ring
7	A5609950	1	NA 4904	needle roller bearing
8	A5071220	1	Tam. 20	Circlip



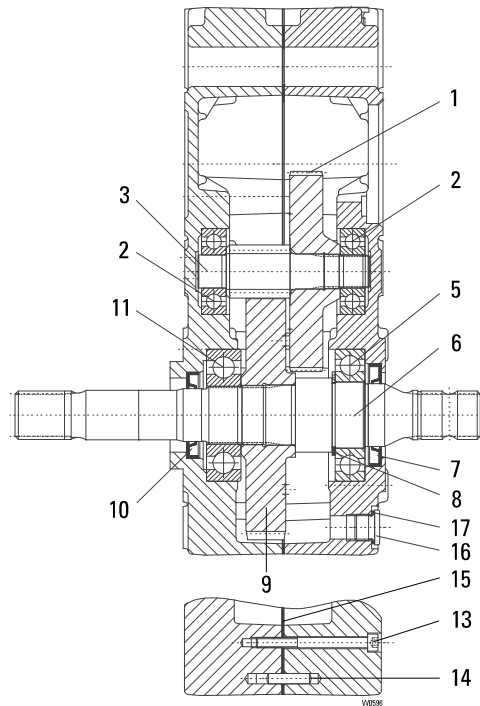
Spare parts list

SU-A / SF / SA-C



Replacement and repairs may only be carried out by trained personnel.

Gear SF 25 ...



Item	Part number	Qty.	Description	Designation
	A2227000300	1	SF 25 228, SF 25 834	1) Gear
	A2227001300	1	SF 25 226, SF 25 832	1) Gear
	A2227002300	1	SF 25 224, SF 25 830	1) Gear
	A2227003300	1	SF 25 222	1) Gear
	A2227004300	1	SF 25 220	1) Gear
	A2227005300	1	SF 25 218	1) Gear
	A2227006300	1	SF 25 216	1) Gear
	A2227016300	1	SF 25 230	1) Gear
1	A2227305110	1	SF 25 228, SF 25 226, SF 25 834, SF 25 832	Toothed wheel
	A2227304110	1	SF 25 224, SF 25 222, SF 25 830	Toothed wheel
	A2227303110	1	SF 25 220, SF 25 218	Toothed wheel
	A2227302110	1	SF 25 216	Toothed wheel
	A2227308110	1	SF 25 230	Toothed wheel
2	A5600530	2	6304	Grooved ball bearing
3	A2327300190	1	DIN 625	Pinion shaft
		1	SF 25 228, SF 25 224, SF 25 220, SF 25 216, SF 25 230	Pinion shaft
		1	SF 25 834, SF 25 830	Pinion shaft
	A2327301190	1	SF 25 226, SF 25 222, SF 25 218, SF 25 832	Pinion shaft
5	A5609860	1	6208-C3	Grooved ball bearing
6	A2227304230	1	DIN 625	Drive shaft
7	A5611250	1	38×62×7	Shaft seal
8	A5060820	1	DIN 3760	Shaft seal
9	A2227307110	1	S40×50×2.5	Supporting washer
		1	DIN 988	Supporting washer
		1	SF 25 228, SF 25 224, SF 25 220, SF 25 216, SF 25 230	Toothed wheel
		1	SF 25 832, SF 25 830	Toothed wheel
	A2227306110	1	SF 25 226, SF 25 222, SF 25 218, SF 25 832	Toothed wheel
10	A5619920	1	32×52×7	Shaft seal
11	A5600610	1	DIN 3760	Shaft seal
13	A5008040	8	6307	Grooved ball bearing
14	A5040290	4	M6×65	ISO 4762
15	A2227300950	1	6m6×24	ISO 2338
16	A5039540	2		Pin
17	A5150040	2	C16×20	Seal
		2	DIN 7603	Locking bolt
		2		Washer

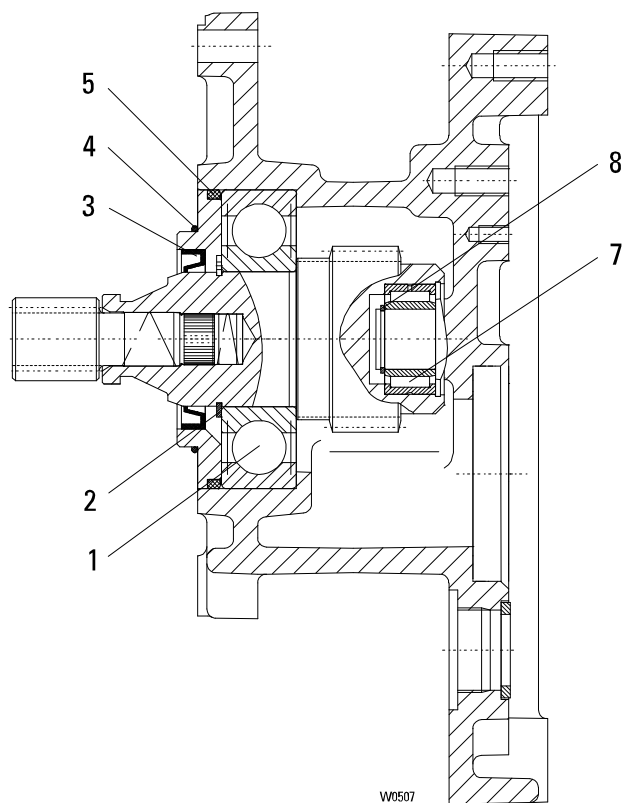
Without gear oil: amount required see operating instruction

01-0.3.4.1-us-1.2-ys | A11888101 Rev AB



Replacement and repairs may only be carried out by trained personnel.

Intermediate gear SF 35 8..



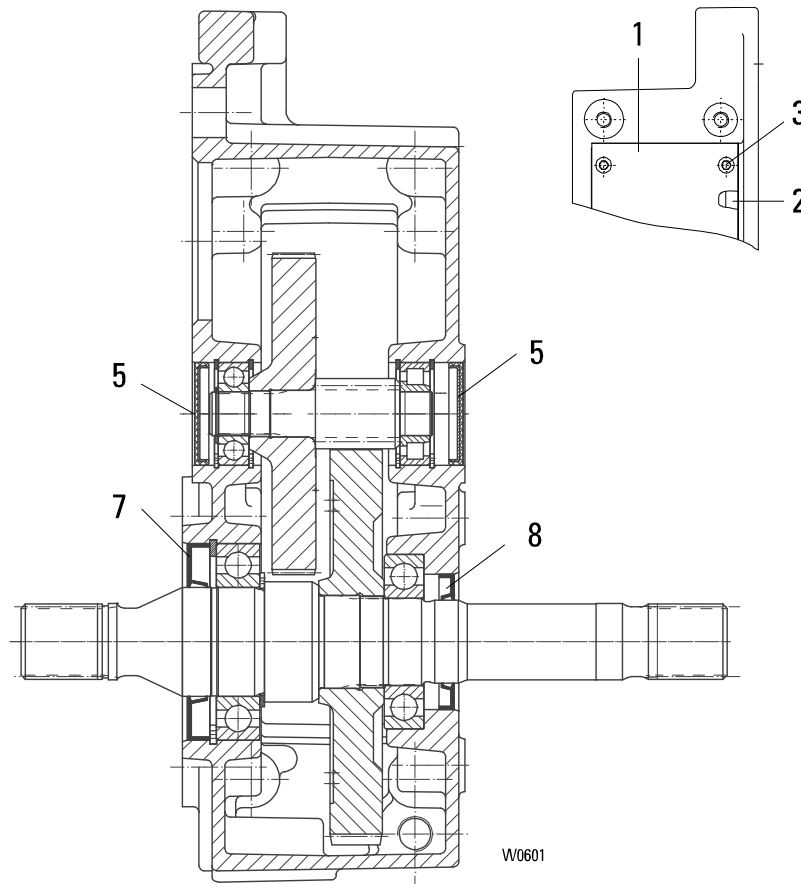
W0507

Item	Part number	Qty.	Description	Designation	
	A2427040300	1	SF 35 836	Intermediate gear	
	A2427037300	1	SF 35 834		
		1	SF 35 832		
1	A5608290	1	6309-27	DIN 625	Grooved ball bearing
2	A5061010	1	45×1.75	DIN 471	Locking ring
3	A5610260	1	45×60×8 NB	DIN 3760	Shaft seal
4	A5159530	1	70×2	NB 70	Round sealing ring
5	A5159700	1	90×4	NB 70	Round sealing ring
7	A5609950	1	NA 4904	DIN 5617	needle roller bearing
8	A5071220	1	SW 20		Circlip



Replacement and repairs may only be carried out by trained personnel.

Gear SF 35...



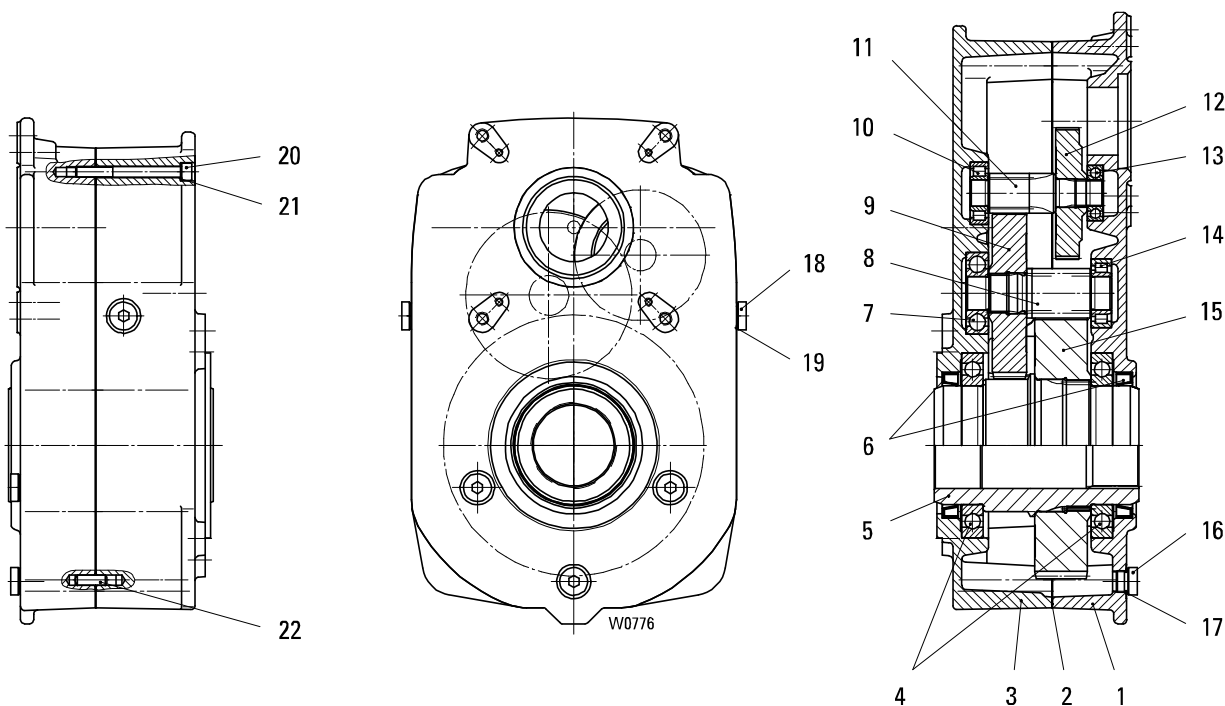
Item	Part number	Qty.	Description	Designation
	A2327010300	1	SF 35 230	Gear
		1	SF 35 836	
	A2327011300	1	SF 35 228	
		1	SF 35 834	
	A2327012300	1	SF 35 226	
		1	SF 35 832	
	A2327013300	1	SF 35 224	
	A2327014300	1	SF 35 222	
	A2327015300	1	SF 35 220	
1	A2327300960	1		
2	A2327300950	1		Seal
3	A5008100	8	M6×16	Socket head cap screw
			DIN 6912-8.8	
5	A5180410	1	47×6.5	End cap
7	A5611260	1	AS50×90×10	Shaft seal
8	A5611250	1	AS38×62×7	Shaft seal

1) Gear only available as complete unit except the signed parts
Without gear oil: amount required see operating instruction



Replacement and repairs may only be carried out by trained personnel.

Gear SA-C 57



Item	Part number	Qty.	Description	Designation
	A1527011300	1	SA-. 57 42 (Pos.1-22)	Gear
	A1527012300	1	SA-. 57 40 (Pos.1-22)	
	A1527013300	1	SA-. 57 38 (Pos.1-22)	
	A1527014300	1	SA-. 57 36 (Pos.1-22)	
	A1527015300	1	SA-. 57 34 (Pos.1-22)	
	A1527016300	1	SA-. 57 32 (Pos.1-22)	
	A1527017300	1	SA-. 57 30 (Pos.1-22)	
	A1527018300	1	SA-. 57 28 (Pos.1-22)	
	A1527019300	1	SA-. 57 26 (Pos.1-22)	
	A1527020300	1	SA-. 57 24 (Pos.1-22)	
	A1527021300	1	SA-. 57 22 (Pos.1-22)	
1	A1527704010	1		Gear box
2	A3325500950	1		Seal
3	A1527702020	1		Gear cap
4	A5608560	2	16018-C3 DIN 625	Grooved ball bearing
5	A1527701230	1		Drive shaft
6	A5618060	2	A9×110×12 6305	Shaft seal
7	A5600200	1	DIN 625	Grooved ball bearing
8	A1527713190	1	SA-. 57 42	Pinion
		1	SA-. 57 36	
		1	SA-. 57 38	
		1	SA-. 57 32	
		1	SA-. 57 24	
	A1527714190	1	SA-. 57 40	
		1	SA-. 57 34	
		1	SA-. 58 30	
		1	SA-. 57 28	
		1	SA-. 57 26	
		1	SA-. 57 22	
9	A1527713110	1	SA-. 57 42	Toothed wheel
		1	SA-. 57 40	
		1	SA-. 57 36	
		1	SA-. 57 34	
	A1527714110	1	SA-. 57 38	
		1	SA-. 57 32	
		1	SA-. 57 30	
	A1527715110	1	SA-. 57 28	
		1	SA-. 57 26	
		1	SA-. 57 24	
		1	SA-. 57 22	

01-0.3.4.1-us-1.2-ys | A11868101 Rev AB



Spare parts list

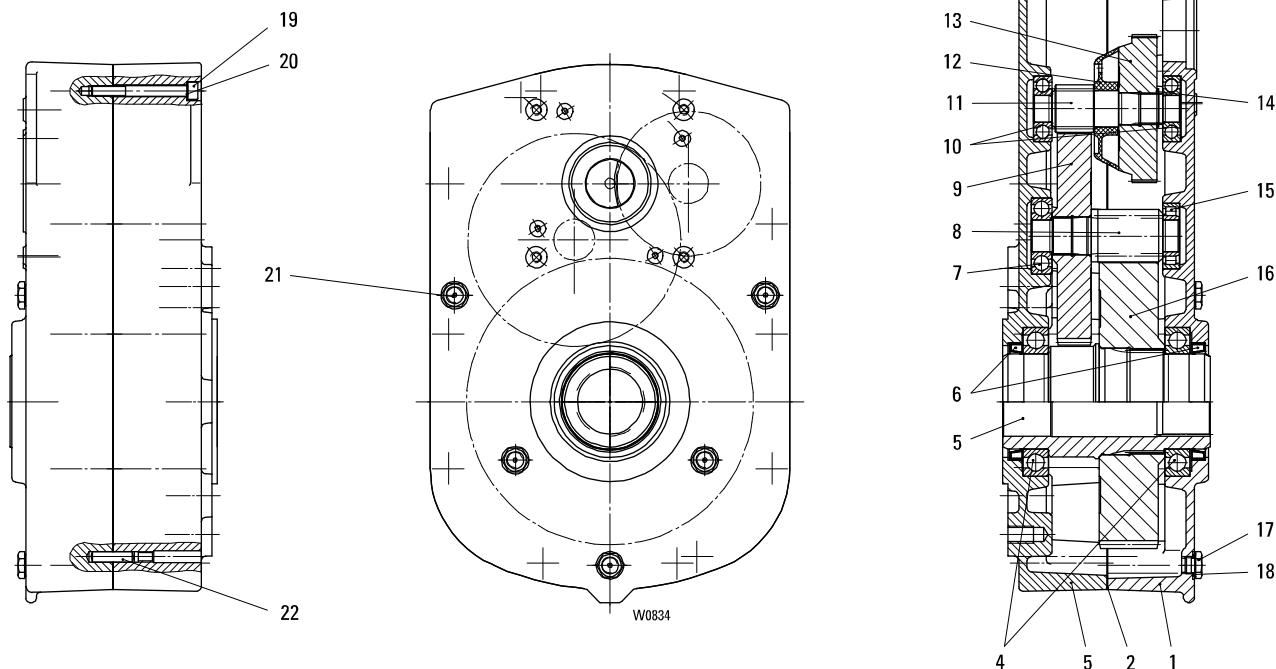
SU-A / SF / SA-C



Item	Part number	Qty.	Description	Designation
10	A5608120	1	NJ 204 EC DIN 5412	Roller bearing
11	A1527710190	1	SA-. 57 42 z=12	Pinion
		1	SA-. 57 40	
		1	SA-. 57 36	
		1	SA-. 57 34	
	A1527711190	1	SA-. 57 38 z=17	
		1	SA-. 57 32	
		1	SA-. 57 30	
	A1527712190	1	SA-. 57 28 z=24	
		1	SA-. 57 26	
		1	SA-. 57 24	
		1	SA-. 57 22	
	12	A1527710110	1	SA-. 57 42 z=91
1			SA-. 57 40	
1			SA-. 57 38	
1			SA-. 57 36	
A1527711110		1	SA-. 57 34 z=56	
		1	SA-. 57 32	
		1	SA-. 57 30	
		1	SA-. 57 28	
		1	SA-. 57 26	
		1	SA-. 57 24	
		1	SA-. 57 22	
		1	SA-. 57 22 z=35	
13	A5600440	1	6004-2RS DIN 625	Grooved ball bearing
14	A5601310	1	NJ205E DIN 5412	Roller bearing
15	A1527716110	1	SA-. 57 42 z=79	Toothed wheel
		1	SA-. 57 38	
		1	SA-. 57 36	
		1	SA-. 57 32	
	A1527717110	1	SA-. 57 28	
		1	SA-. 57 24	
		1	SA-. 57 40 z=77	
		1	SA-. 57 34	
		1	SA-. 57 30	
		1	SA-. 57 26	
		1	SA-. 57 22	
		1	SA-. 57 22	
16	A5039120	4	AM16×1.5 DIN 7604	Screw plug
17	A5150040	4	C16×20 DIN 7603	Sealing ring
18	A3225000570	1		Screw plug
19	A5150040	1	C16×20 DIN 7603	Sealing ring
20	A5008590	10	M8×80 ISO 4762	Socket head cap screw
21	A5068390	10	S8	Locking disc
22	A5049600	2	8m6×24 ISO 2338	Dowel pin

Replacement and repairs may only be carried out by trained personnel.

Gear SA-C 67



Item	Part number	Qty.	Description	Designation	
	A1627009300	1	SA-. 67 46 (Pos.1-22)	Gear	
	A1627010300	1	SA-. 67 44 (Pos.1-22)		
	A1627011300	1	SA-. 67 42 (Pos.1-22)		
	A1627012300	1	SA-. 67 40 (Pos.1-22)		
	A1627013300	1	SA-. 67 38 (Pos.1-22)		
	A1627014300	1	SA-. 67 36 (Pos.1-22)		
	A1627015300	1	SA-. 67 34 (Pos.1-22)		
	A1627016300	1	SA-. 67 32 (Pos.1-22)		
	A1627017300	1	SA-. 67 30 (Pos.1-22)		
	A1627018300	1	SA-. 67 28 (Pos.1-22)		
	A1627019300	1	SA-. 67 26 (Pos.1-22)		
1	A1627702010	1			Gear box
2	A3425500950	1			Seal
3	A1627702020	1		Gear cover	
4	A5601130	2	16018-C3 DIN 625	Grooved ball bearing	
5	A1627701230	1		Drive shaft	
6	A5618060	2	A90×110×12 DIN 3760	Shaft seal	
7	A5601680	1	6306 DIN 625	Grooved ball bearing	
8	A1627713190	1	SA-. 67 46 z=11	Pinion	
		1	SA-. 67 42		
		1	SA-. 67 40		
		1	SA-. 67 36		
		1	SA-. 67 32		
		1	SA-. 67 28		
	A1627714190	1	SA-. 67 44 z=13		
		1	SA-. 67 38		
		1	SA-. 67 34		
		1	SA-. 67 30		
		1	SA-. 67 26		
9	A1627716110	1	SA-. 67 46 z=80		Toothed wheel
		1	SA-. 67 44		
		1	SA-. 67 40		
		1	SA-. 67 38		
	A1627715110	1	SA-. 67 42 z=73		
		1	SA-. 67 36		
		1	SA-. 67 34		

01-0.3.4.1-us-1.2-ys | A11888101 Rev AB



Spare parts list

SU-A / SF / SA-C



Item	Part number	Qty.	Description	Designation
	A1627714110	1	SA-. 67 32 z=64	
		1	SA-. 67 30	
		1	SA-. 67 28	
		1	SA-. 57 26	
10	A5600200	2	6305 DIN 625	Grooved ball bearing
11	A1627710190	1	SA-. 67 46 z=15	Pinion
		1	SA-. 67 44	
		1	SA-. 67 40	
		1	SA-. 67 38	
	A1627711190	1	SA-. 67 42 z=22	
		1	SA-. 67 36	
		1	SA-. 67 34	
	A1627712190	1	SA-. 67 32 z=31	
		1	SA-. 67 30	
		1	SA-. 67 28	
		1	SA-. 67 26	
12	A3425500390	1		Oil splash ring
13	A1627711110	1	SA-. 67 46 z=125	Toothed wheel
		1	SA-. 67 44	
		1	SA-. 67 42	
	A1627712110	1	SA-. 67 40 z=80	
		1	SA-. 67 38	
		1	SA-. 67 36	
		1	SA-. 67 34	
		1	SA-. 67 32	
		1	SA-. 67 30	
	A1627713110	1	SA-. 67 28 z=51	
		1	SA-. 67 26	
14	A5068120	1	29x1.5 DIN 471	Circlip
15	A5602080	1	NJ206EC DIN 5412	Roller bearing
16	A1627718110	1	SA-. 67 46 z=78	Toothed wheel
		1	SA-. 67 42	
		1	SA-. 67 40	
		1	SA-. 67 36	
		1	SA-. 67 32	
		1	SA-. 67 28	
	A1627717110	1	SA-. 67 44 z=75	
		1	SA-. 67 38	
		1	SA-. 67 34	
		1	SA-. 67 30	
		1	SA-. 67 26	
17	A5039120	4	AM16x1.5 DIN 7604	Screw plug
18	A5150040	5	C16x20 DIN 7603	Sealing ring
19	A5002370	10	M10x90 ISO 4762-8.8	Socket head cap screw
20	A5069040	10	10 DIN 7980	Spring washer
21	A3225000570	1		Screw plug
22	A5049690	2	10m6x40 ISO 2338	Dowel pin



Replacement and repairs may only be carried out by trained personnel.

Torque support

Travel drive type	Usage	Part number
SF 15	SR-S125	A2127003220
SF 15 / SF 17		A2127001220
SF 25	SR-S125	A2227010220
SF 25	SR-S160	A2227008220
SF 25	SR-S200	A2227005220
SF 25	OE-S05, K.L	A2227001220
SF 25	OE-S06	A2227003220
SF 35	SR-S200	A2327007220
SF 35	SR-S250	A2327010220
SF 35	OE-S	A2327005220
SF 35	K.L	A2327006220
SA-C 57	K.L-. 400/500	A1527003220
	K.L-E 315	A1527009220
	SR-E250/OE-R08	A1527013220
	SR-E315/OE-R09	A1527011220
SA-C 67	K.L-. 400/500	A1627000220
	SR-E315/OE-R09	A1627010220
	SR-E400	A1627013220

WARRANTY

LIMITATION OF WARRANTIES, REMEDIES AND DAMAGES

INDEMNIFICATION AND SAFE OPERATION

Buyer shall comply with and require its employees to comply with directions set forth in instructions and manuals furnished by Seller and shall use and require its employees to follow such instructions and manuals and to use reasonable care in the use and maintenance of the goods. Buyer shall not remove or permit anyone to remove any warning or instruction signs on the goods. In the event of personal injury or damage to property or business arising from the use of the goods, Buyer shall within 48 hours thereafter give Seller written notice of such injury or damage. Buyer shall cooperate with Seller in investigating any such injury or damage and in the defense of any claims arising therefrom.

If Buyer fails to comply with this section or if any injury or damage is caused, in whole or in part, by Buyer's failure to comply with applicable federal or state safety requirements, Buyer shall indemnify and hold Seller harmless against any claims, loss or expense for injury or damage arising from the use of the goods.

CMCO Warranty (HOISTS)

- A. Columbus McKinnon Corporation ("Seller") warrants to the original end user ("Buyer") that: (a) for a period of one (1) year from the date of Seller's delivery of the goods (collectively, the "Goods") to the carrier, the electrical components of the Goods will be free from defects in workmanship and materials; and (b) for a period of three (3) years from the date of Seller's delivery of the goods (collectively, the "Goods") to the carrier, the mechanical components of the Goods will be free from defects in workmanship and materials.
- B. IN THE EVENT OF ANY BREACH OF SUCH WARRANTY, SELLER'S SOLE OBLIGATION SHALL BE EXCLUSIVELY LIMITED TO, AT THE OPTION OF SELLER, REPAIR OR REPLACEMENT, F.O.B. SELLER'S POINT OF SHIPMENT, OF ANY GOODS THAT SELLER DETERMINES TO HAVE BEEN DEFECTIVE OR, IF SELLER DETERMINES THAT SUCH REPAIR OR REPLACEMENT IS NOT FEASIBLE, TO A REFUND OF THE PURCHASE PRICE UPON RETURN OF THE GOODS TO SELLER. NO CLAIM AGAINST SELLER FOR ANY BREACH OF (i) SUCH WARRANTY WITH RESPECT TO THE ELECTRICAL COMPONENTS OF ANY GOOD SHALL BE VALID OR ENFORCEABLE UNLESS BUYER'S WRITTEN NOTICE THEREOF IS RECEIVED BY SELLER WITHIN ONE (1) YEAR FROM THE DATE OF SELLER'S DELIVERY TO THE CARRIER AND (ii) SUCH WARRANTY WITH RESPECT TO THE MECHANICAL COMPONENTS OF ANY GOOD SHALL BE VALID OR ENFORCEABLE UNLESS BUYER'S WRITTEN NOTICE THEREOF IS RECEIVED BY SELLER WITHIN ONE (1) YEAR FROM THE DATE THE DATE ANY ALLEGED CLAIM ACCRUES. EXCEPT FOR THE WARRANTY SET FORTH ABOVE, SELLER MAKES NO OTHER WARRANTIES WITH RESPECT TO THE GOODS, WHETHER EXPRESSED OR IMPLIED, INCLUDING ANY WARRANTIES OF MERCHANTABILITY, FITNESS FOR A PARTICULAR PURPOSE, QUALITY AND/OR THOSE ARISING BY STATUTE OR OTHERWISE BY LAW OR FROM ANY COURSE OF DEALING OR USE OF TRADE, ALL OF WHICH ARE HEREBY EXPRESSLY DISCLAIMED.

- C. IN NO EVENT SHALL SELLER BE LIABLE TO BUYER OR ANY THIRD PARTY WITH RESPECT TO ANY GOOD, WHETHER IN CONTRACT, TORT OR OTHER THEORY OF LAW, FOR LOSS OF PROFITS OR LOSS OF USE, OR FOR ANY INCIDENTAL, CONSEQUENTIAL, SPECIAL, DIRECT OR INDIRECT DAMAGES, HOWSOEVER CAUSED. SELLER'S MAXIMUM LIABILITY TO BUYER WITH RESPECT TO THE GOODS SHALL IN NO EVENT EXCEED THE PRICE PAID BY BUYER FOR THE GOODS THAT ARE THE SUBJECT OF THE APPLICABLE CLAIM.
- D. Seller shall not be liable for any damage, injury or loss arising out of the use of the Goods if, prior to such damage, injury or loss, such Goods are: (1) damaged or misused following Seller's delivery to the carrier; (2) not maintained, inspected, or used in compliance with applicable law and Seller's written instructions and recommendations; or (3) installed, repaired, altered or modified (a) with any part or accessory other than those supplied by Seller or (b) without compliance with such laws, instructions or recommendations.
- E. This warranty is limited and provided only to the original end user. **Each Good must be registered within sixty (60) days of receipt of each product to establish eligibility.** Please register at www.cmworks.com/hoist-warranty-registration or submit registration card via US mail.
- F. Any action against Seller for breach of warranty, negligence or otherwise in connection with the electrical components of any Good must be commenced by Buyer within one (1) year after: (a) the date any alleged claim accrues; or (b) the date of delivery of the Goods to Buyer, whichever is earlier. Any action against Seller for breach of warranty, negligence or otherwise in connection with the mechanical components of any Good must be commenced by Buyer within one (1) year after the date any alleged claim accrues.
- G. This warranty is contingent upon Buyer's proper maintenance and care of the Goods, and does not extend to normal wear and tear. Seller reserves the right, at its option, to void this warranty in the event of Buyer's use with the Goods of parts or accessories other than those supplied by Seller.

WARNING

Alterations or modifications of equipment and use of non-factory repair parts can lead to dangerous operation and injury.

TO AVOID INJURY:

- Do not alter or modify equipment.
- Do use only factory replacement parts.



USA: Ph: (800) 888.0985 • (716) 689.5400 • Fax: (716) 689.5644 • www.cmworks.com

CANADA: Ph: (877) 264.6478 • Fax: (877) 264.6477 • www.cmworks.com